



EAST BATON ROUGE PARISH LIBRARY

Facility Masterplan Presentation 4.16.2025



AGENDA

ITEM I – EXISTING CONDITIONS

Existing Facility Assessment

ITEM II – NEEDS

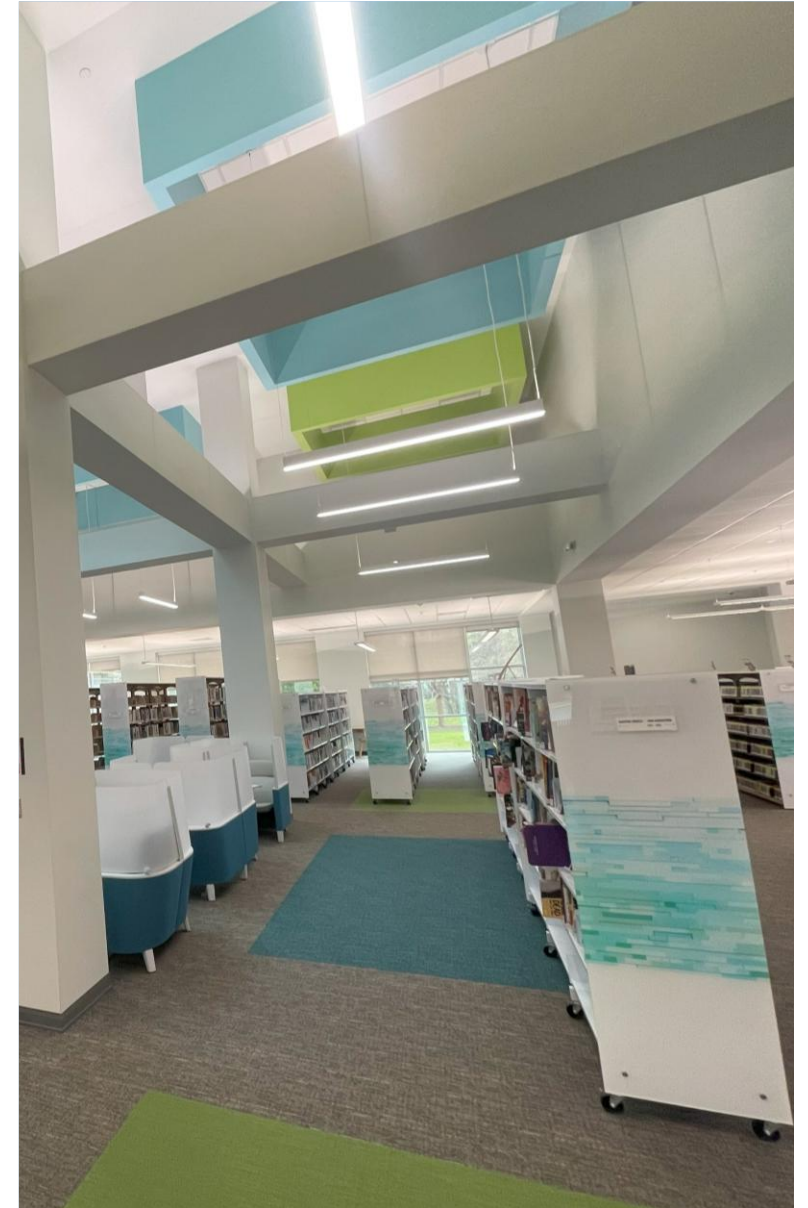
How do the libraries need to change

ITEM III – TRANSFORMATION

Proposed library changes

ITEM IV – ESTIMATED COSTS

Preliminary Cost Projections





ASSESSMENT PROCESS OVERVIEW

STEP ONE

Reviewed existing library conditions at 16 different library facilities

STEP TWO

Determined current and future library needs

STEP THREE

Developed implementation strategies at each location with recommended changes and associated costs



ITEM I – EXISTING CONDITIONS

EXISTING FACILITY ASSESSMENTS

EBRPL BRANCH LIBRARIES ARE POPULAR AND WELL USED

HOW THE FACILITIES WERE USED IN 2024



ATTENDEES

5,191 PROGRAMS OFFERED
AND

5,814 MEETING ROOM BOOKINGS
WITH

190,613 TOTAL ATTENDEES

EACH MEETING / PROGRAM ROOM
AVERAGES:

4,332 ATTENDEES / YEAR



ITEMS CHECKED OUT

2,850,940 ITEMS CHECK OUT IN 2024

THE EBRPL SYSTEM AVERAGES:

830 ITEMS CHECKED-OUT / HOUR

OR

54,825 ITEMS CHECKED-OUT / WEEK

AND

54,825 ITEMS CHECKED-IN / WEEK



LIBRARY VISITS

1,758,026 VISITORS IN 2024

LIBRARIES ARE OPEN **66** HOURS / WEEK

THE EBRPL SYSTEM AVERAGES:

513 VISITORS / HOUR

OR

33,800 VISITORS / WEEK



EBRPL FACILITIES REVIEWED

- MAIN LIBRARY
- BAKER BRANCH LIBRARY
- BLUEBONNET REGIONAL BRANCH LIBRARY
- CARVER BRANCH LIBRARY
- CENTRAL BRANCH LIBRARY
- DELMONT GARDENS BRANCH LIBRARY
- EDEN PARK BRANCH LIBRARY
- FAIRWOOD BRANCH LIBRARY
- GREENWELL SPRINGS ROAD REGIONAL BRANCH LIBRARY
- JONES CREEK REGIONAL BRANCH LIBRARY
- PRIDE-CHANEYVILLE BRANCH LIBRARY
- RECYCLED READS (OUTREACH)
- RIVER CENTER BRANCH LIBRARY
- SCOTLANDVILLE BRANCH LIBRARY
- SOUTH BRANCH LIBRARY
- ZACHARY BRANCH LIBRARY

THE LIBRARIES ARE IN GOOD CONDITION

- The Branch Library facilities are in good condition. The overall care and maintenance of the facilities is excellent.
- The overall condition of the furniture is good. Some older libraries have furniture nearing end of expected lifecycle.



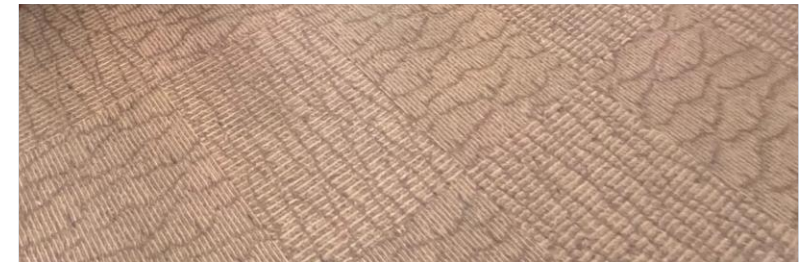


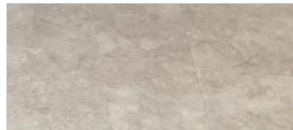
EXISTING SHELVING CONFIGURATIONS

- Older library shelving does not meet current library standard for 66" shelving height.
- The top and bottom shelves are not always being used at existing 84" shelving.
- Collections have been evaluated, with strategic reductions anticipated.
- Children's and popular collections don't always allow for browsing.

EXISTING PUBLIC COMPUTERS

- The number of public computers now exceeds demand, due to the proliferation of personal devices. Libraries can reduce the number of public computers to re-allocate the space.
- The existing furniture was designed to accommodate large PC computers. Replacement recommended to meet current needs.



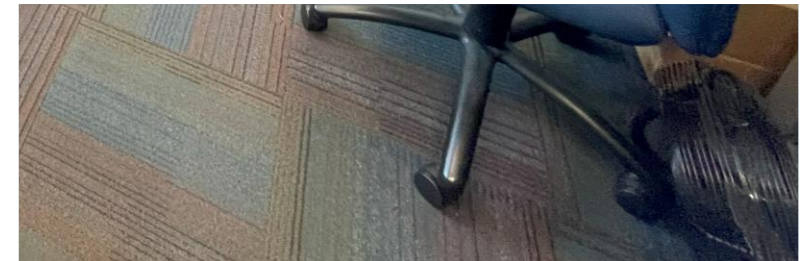
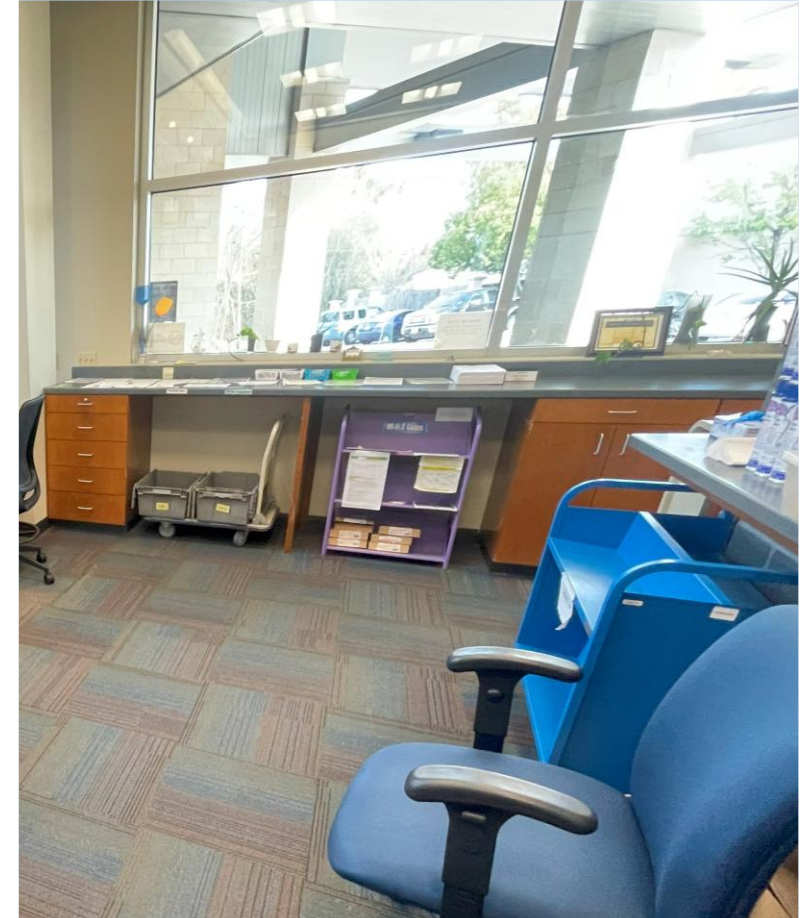
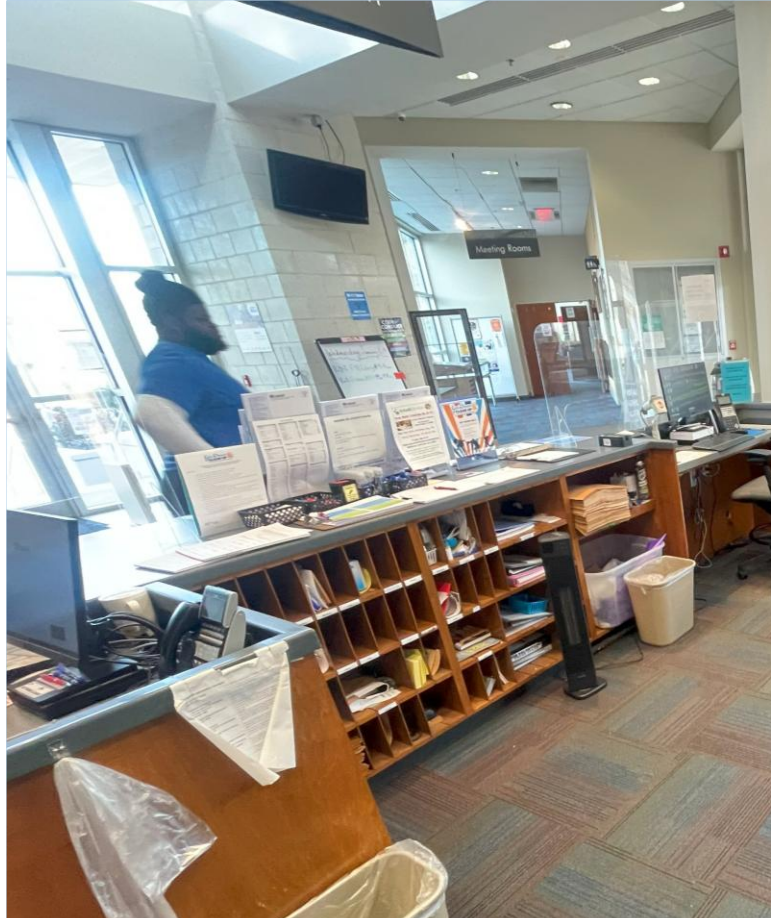


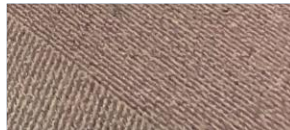
MEETING ROOMS CONFIGURATIONS

- Meeting rooms require technology updates.
- Many rooms lack adequate storage for tables and chairs, limiting set-up flexibility.
- Rooms do not currently meet capacity needs for program and community events.

EXISTING STAFF SERVICE DESKS

- Configuration of existing desks does not align with current patron and staffing requirements.
- Desk locations do not always align with adjacent needs.
- Some existing desks are oversized. A reduction will allow for reallocation of space for other needs.



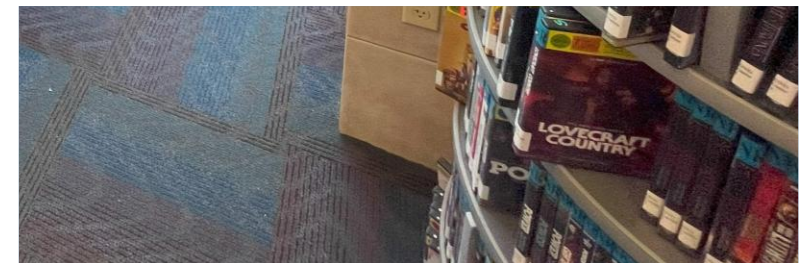
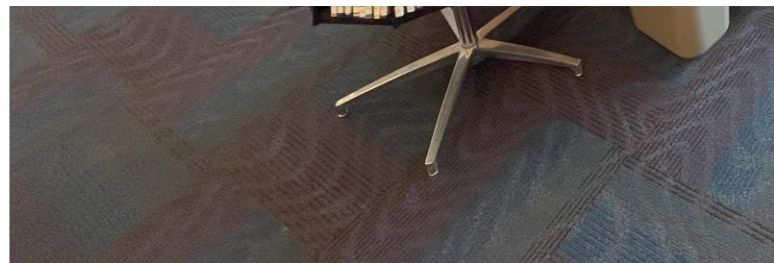


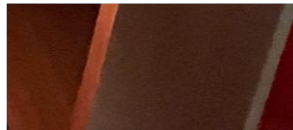
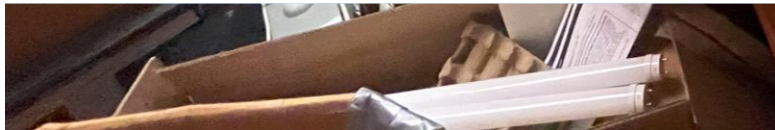
EXISTING WORK / STUDY SPACES

- Current layouts do not include adequate spaces for study and/or work.
- Current demand for private work / study spaces is high.
- Many older libraries do not have dedicated rooms for study or co-working functions.

EXISTING FURNITURE

- Many libraries lack furniture which meets current needs for power and work surfaces.
- Some facilities do not have enough casual seating.
- The condition and age of some library furniture is nearing end of expected lifecycle.



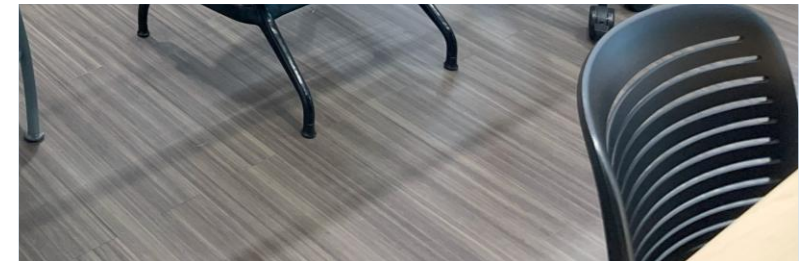
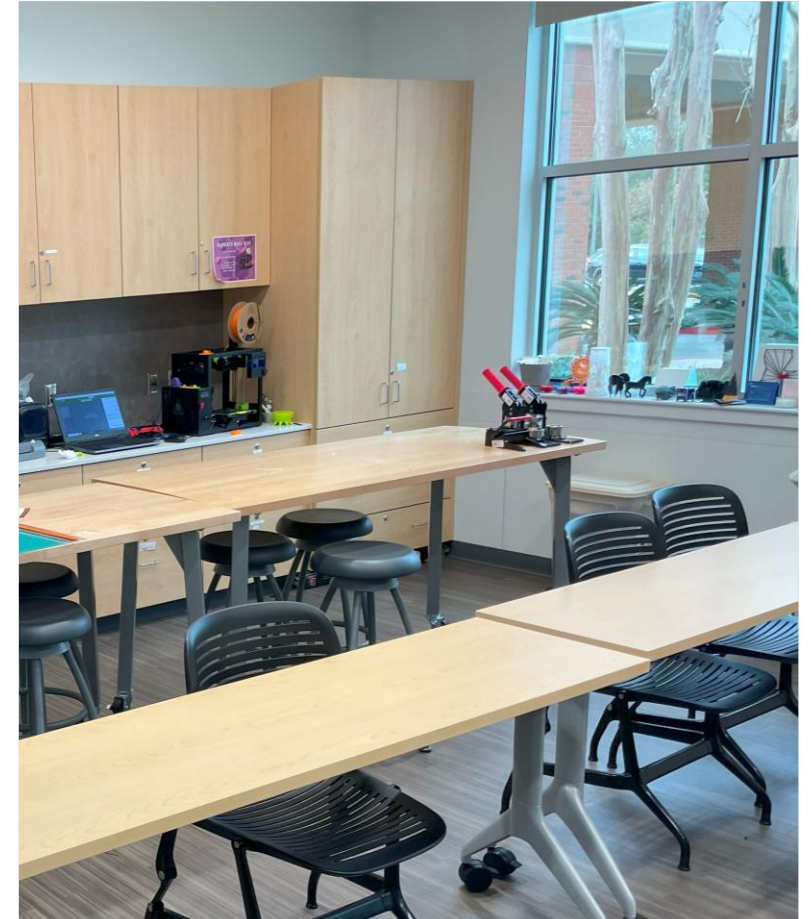


EXISTING STORAGE

- Staff spaces are filled with storage items.
- Excessive storage is limiting efficiency of spaces.

EXISTING PROGRAM ROOMS

- Lack of program room space is limiting programming opportunities.
- Adding rooms and / or increasing undersized spaces will allow the library to expand maker / craft / digital program activities.





EXISTING DEDICATED STORYTIME

- Some configurations do not meet current needs.
- Room size does not always align with capacity requirements.
- Transform dedicated storytime spaces into flexible multi-use areas.

EXISTING MATERIAL RETURNS

- Convert spaces to proper sizing and configuration.
- Reconfigure spaces to include a manual book drop at all locations.
- Reconfigure spaces to include a smart return at all locations.



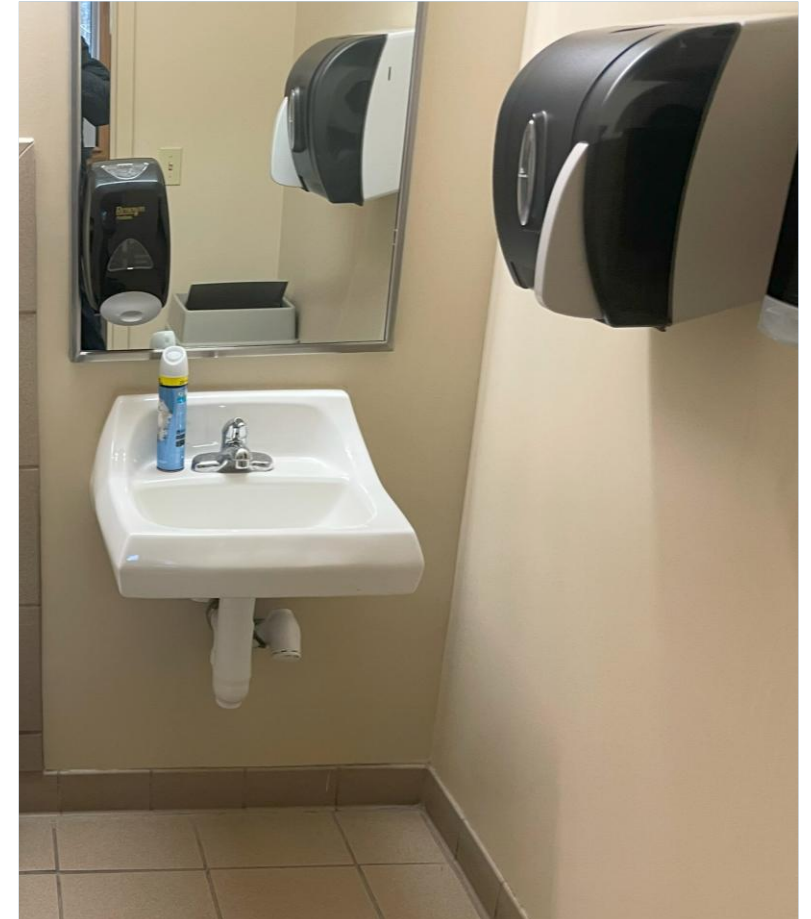
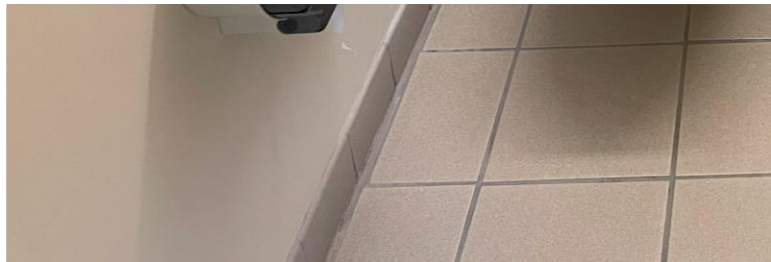
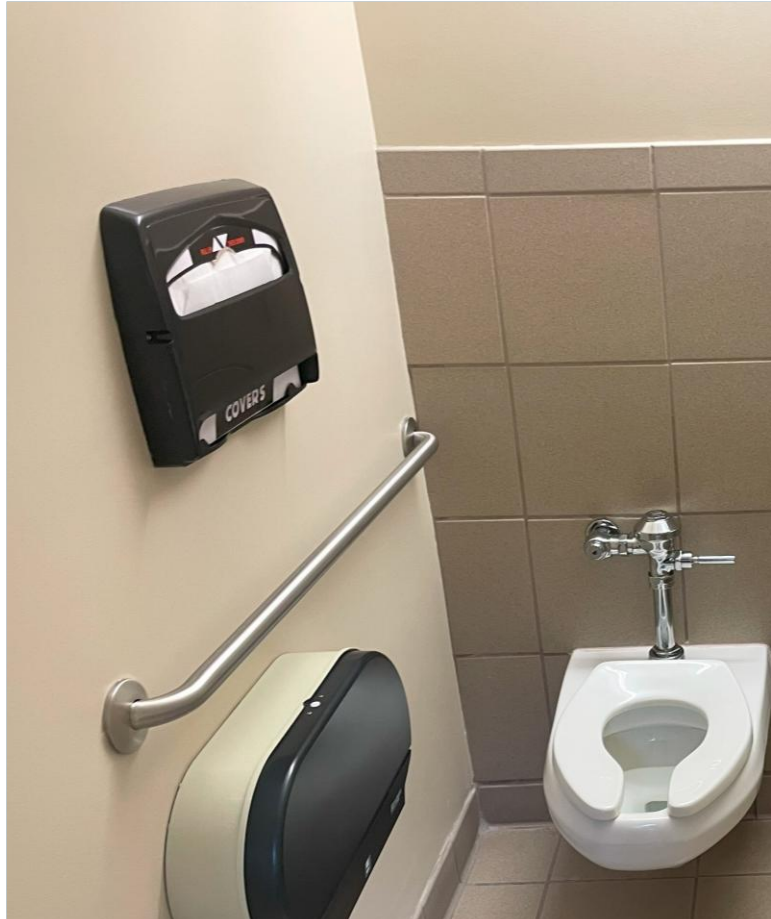


EXISTING OUTDOOR COURTYARDS

- Existing courtyards are not being fully utilized.
- Older courtyards require repairs.
- Utilize space for building expansions if needed.

EXISTING RESTROOMS

- Not all restrooms meet current ADA standards.
- Some facilities do not have generational single-use restrooms.





EXISTING STAFF AREAS

- Existing configurations are not large enough for current and future staffing levels.
- Staff areas are not centralized in older facilities.
- Type of work does not match room and furniture configurations.
- Many staff areas are fixed and do not allow for flexibility.
- Many staff areas are full of stored items.



ITEM II - NEEDS

HOW DO THE LIBRARIES NEED TO CHANGE

TRADITIONAL LAYOUTS

Many existing facilities were designed with a traditional model that makes the library experience transactional.

- Get books
- Use computers
- Attend Meetings

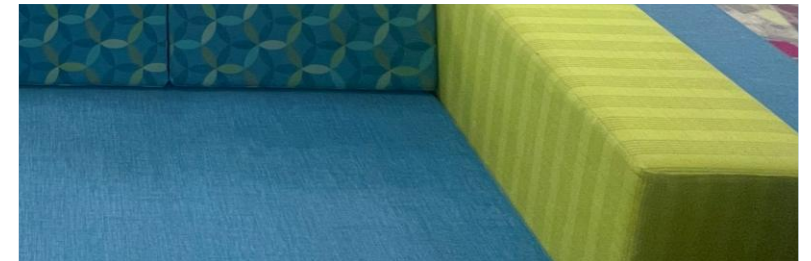
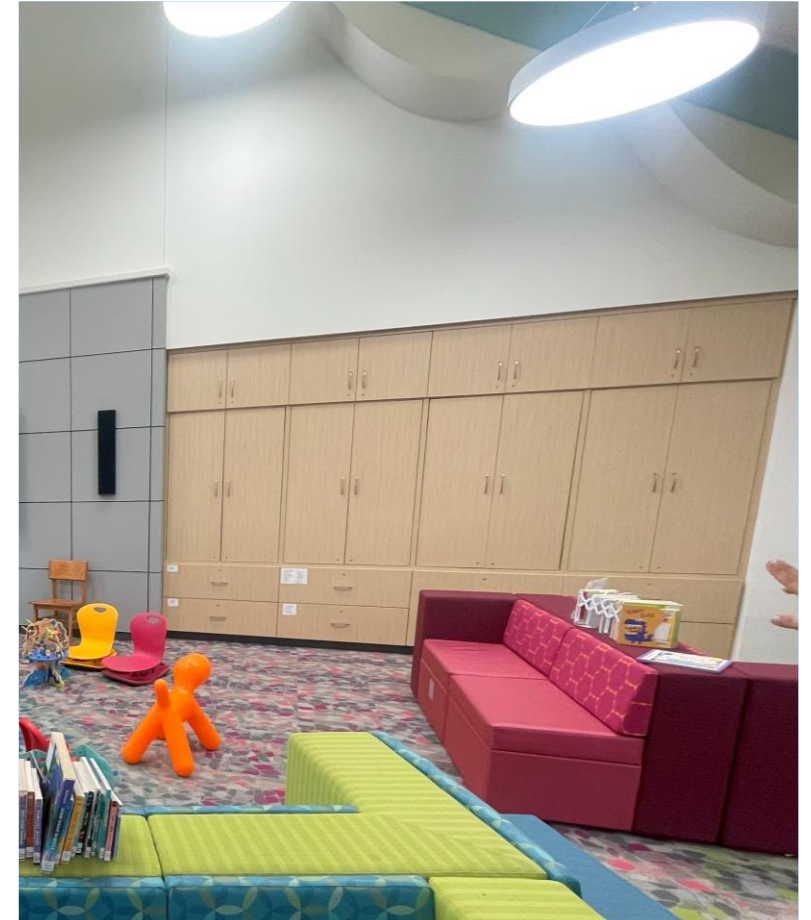
These libraries are struggling to meet current staff / system / patron needs for program, social, activity, maker, and work / study space requirements.

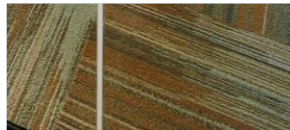


DESTINATION LAYOUT

The existing libraries need to transform to complement the shift in library service to provide appropriate spaces and furniture for:

- Programs / Meetings
- Making / Crafts
- Working / Studying
- Tactile Learning / Play
- Socializing
- Collaboration





COMMON NEEDS (BASIC)

- Transform library layouts to meet current needs and services.

■ COMMON NEEDS

- **Increase Collaborate/ Work/ Study Spaces**
 - Existing library layouts do not include enough small collaborative work / study spaces to meet demand.
 - Add dedicated small group spaces (Work / Study + Conference).
 - Implement teleconferencing equipment.



COMMON NEEDS (BASIC)

- Transform library layouts to meet current needs and services.

■ COMMON NEEDS

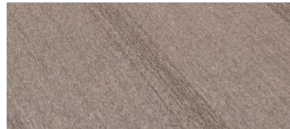
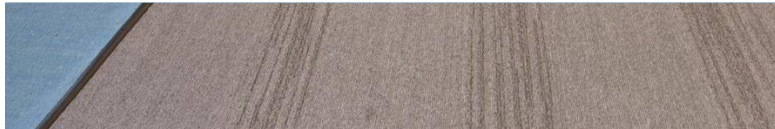
- **Programming areas**

- The library continues to add programming opportunities for citizens. The existing library layouts do not have appropriate rooms for many of the offered programs.
- Add dedicated Digital Lab + Maker Spaces.



COMMON NEEDS (BASIC)

- Transform library layouts to meet current needs and services.
- **COMMON NEEDS**
 - **Improve Meeting Rooms**
 - The existing community rooms require expansion to meet capacity requirements.
 - Upgrade technology to meet current library standards.
 - Upgrade acoustic controls to isolate sound to each room.



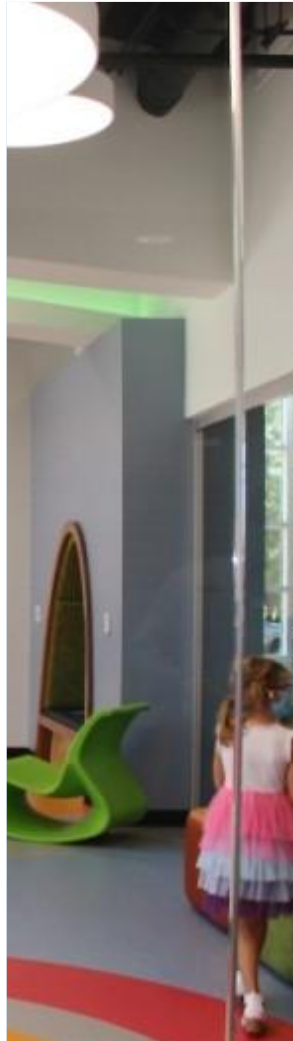
COMMON NEEDS (BASIC)

- Transform library layouts to meet current needs and services.
- **COMMON NEEDS**
 - **Children's Activity Areas**
 - The existing library layouts are heavily focused on collection layouts. A revised configuration will provide activity zones where children can explore and learn in a tactile environment.



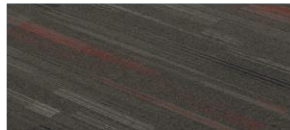
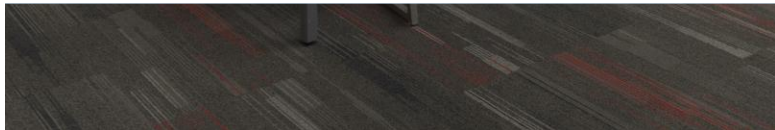
COMMON NEEDS (BASIC)

- Transform library layouts to meet current needs and services.
- **COMMON NEEDS**
 - **Dedicated Teen Areas**
 - The library system has been implementing dedicated Teen Areas in the newer libraries. The existing libraries that don't have a dedicated space will receive them with a renovation.



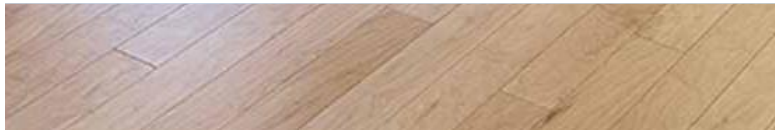
COMMON NEEDS (BASIC)

- Transform library layouts to meet current needs and services.
- **COMMON NEEDS**
 - **Storytime + Craft Areas**
 - Dedicated storytime rooms shall be updated to allow for other types of program opportunities. The spaces will be revised to allow for more flexibility, which will increase use.



COMMON NEEDS (BASIC)

- Transform library layouts to meet current needs and services.
- **COMMON NEEDS**
 - **Collection Areas**
 - Widen aisle to improve accessibility with expanded browsing and display areas.
 - Reduce height of adult shelving from 84" to 66".
 - Evaluate collections, re-purpose under-utilized shelving areas for meeting and program spaces.



COMMON NEEDS (BASIC)

- Transform library layouts to meet current needs and services.

■ COMMON NEEDS

■ Update Furniture

- The existing furniture for many libraries is nearing the end of life. The furniture configuration does not meet current study, work, or reading needs. New furniture with power integration, collaboration, and private reading/study shall be utilized to meet current patron demands.
- Appropriate configuration to align with patron use.
- Two-person tables.
- Lounge seating.
- Flexible configuration.
- Supply ergonomic power access anywhere seating is placed.



COMMON NEEDS (BASIC)

- Transform library layouts to meet current needs and services.

■ COMMON NEEDS

- Centralized Staff Areas
 - The existing library layouts include staff areas in different parts of the library. A centralized staff area would provide an enhanced workflow and allow for the reallocation of staff areas for public space needs.
 - Upgrade material return to include 'Smart' and manual material returns in appropriate configured rooms.
 - Provide appropriate service desk configuration for staff work functions and improved line of site control.



COMMON NEEDS (BASIC)

- Transform library layouts to meet current needs and services.
- **COMMON NEEDS**
 - Update Facilities to Meet Current Standards
 - Update spaces to meet current accessibility standards.
 - Provide access to a Family Restroom in Children's Rooms.
 - As aging adults remain active, provide access to a Generational Restroom for patrons and caregivers.
 - Provide ergonomic furniture solutions.

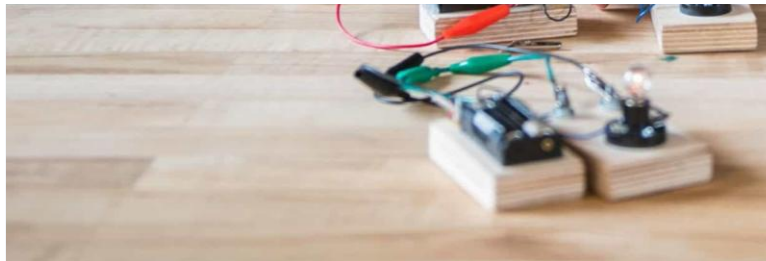


ITEM III - TRANSFORMATION

PROPOSED LIBRARY CHANGES

LIBRARY ACTIVITIES

- Revised layouts will shift focus from static spaces to active zones for various activities.
 - MEET
 - CONNECT / SOCIALIZE
 - RELAX
 - BROWSE
 - SEARCH
 - LEARN / EXPLORE
 - READ
 - PLAY
 - WORK
 - MAKE / ACCOMPLISH
 - STUDY
 - HANG OUT





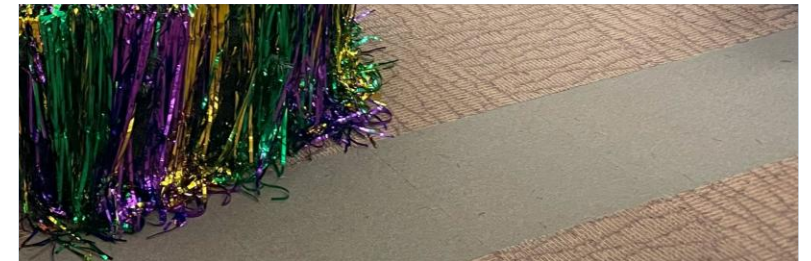
BAKER BRANCH LIBRARY

PROPOSED EXPANSION / RENOVATION - 2026

BAKER BRANCH LIBRARY

Areas of Need:

- Relocate / Revise Building Entry
- Update restrooms to meet ADA
- Re-purpose internal courtyard
- Connect access to Jefferson Street
- Create dedicated Teen Area
- Explore solutions to meet afterschool needs
- Expand children's area to provide activity zones
- Create Digital + Maker space
- Add Work / Study rooms
- Add ergonomic power access at public seating areas
- Update furniture configuration to meet patron use



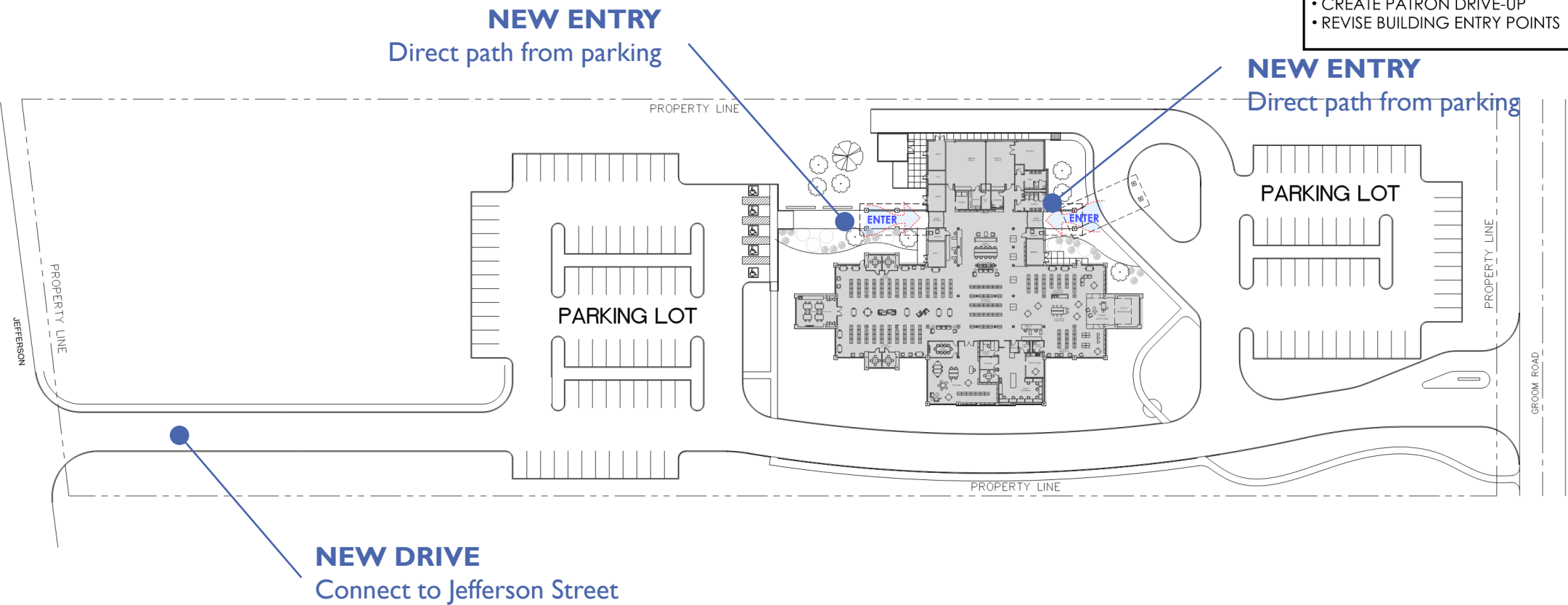
BAKER BRANCH LIBRARY CONCEPT SITE PLAN

KEY STATS:

BUILT 2001
ORIGINAL BRANCH LIBRARY: 18,592 SF
EXPANSION PROPOSED

SITE IMPROVEMENTS

- NEW CONNECTION TO JEFFERSON ST.
- CREATE PATRON DRIVE-UP
- REVISE BUILDING ENTRY POINTS



KEY STATS:

BUILT 2001

ORIGINAL BRANCH LIBRARY: 18,592 SF

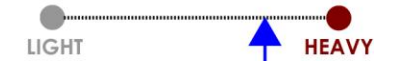
EXPANSION PROPOSED

IMPROVEMENTS

- STUDY ROOM - QTY 4
- STORY + CRAFT ROOM
- GENERATIONAL RESTROOM
- ENTRY FROM BOTH PARKING LOTS
- CHILDREN'S ACTIVITY ZONE
- STUDY PODS - QTY 4
- CONFERENCE ROOM - QTY 1
- DEDICATED TEEN ZONE
- ENLARGED MEETING ROOMS
- PROGRAM ROOM (DIGITAL + MAKER)

COLLECTION

ANTICIPATED 65,000 TO 75,000 ITEMS

BAKER BRANCH LIBRARY CONCEPT PLAN**REORGANIZATION SCALE**FOCUS ON MAXIMIZING
EFFICIENCY OF SPACES



BLUEBONNET REGIONAL BRANCH LIBRARY

PROPOSED RENOVATION - 2026

BLUEBONNET REGIONAL BRANCH LIBRARY

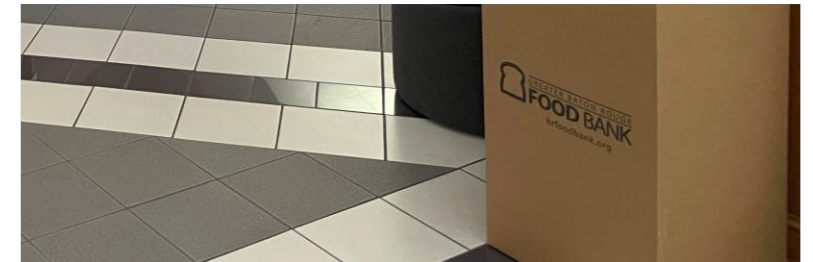
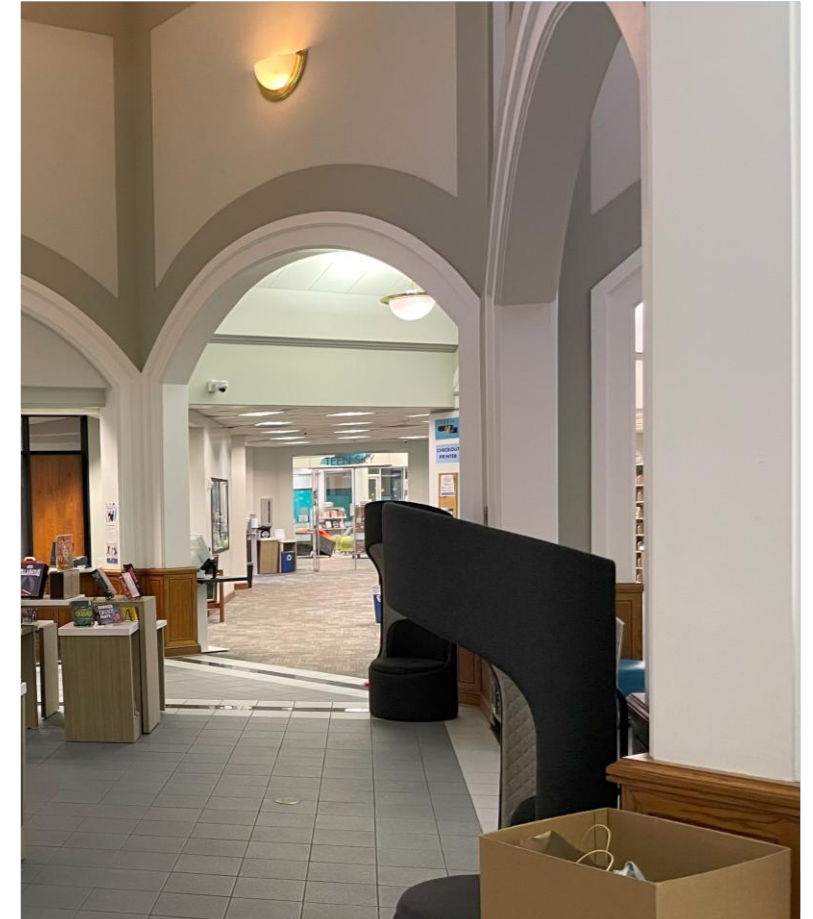
Areas of Need:

Priority I

- Update Lighting
- Update Public Restrooms
- Update Courtyard
- Expand Maker + Digital Lab

Priority II

- Revise Family Toilet
- Create Children's Activity Zone
- Update Children's Program Room
- Centralize Staff Areas
- Improve Meeting Room Configuration
- Relocate public computers
- Update Service Desk Configuration
- Add ergonomic power access at public seating areas



IMPROVEMENTS

- CENTRALIZED STAFF
- ENLARGED (DIGITAL + MAKER)
- UPDATED FAMILY RESTROOM
- GENERATIONAL RESTROOM
- STUDY ROOM - QTY 6
- SHARED CRAFT ROOM
- GENERATIONAL RESTROOM
- CHILDREN'S ACTIVITY ZONE
- ENHANCED SEATING ZONES
- CONFERENCE ROOM - QTY 1

KEY STATS:

BUILT 1993 / 2015

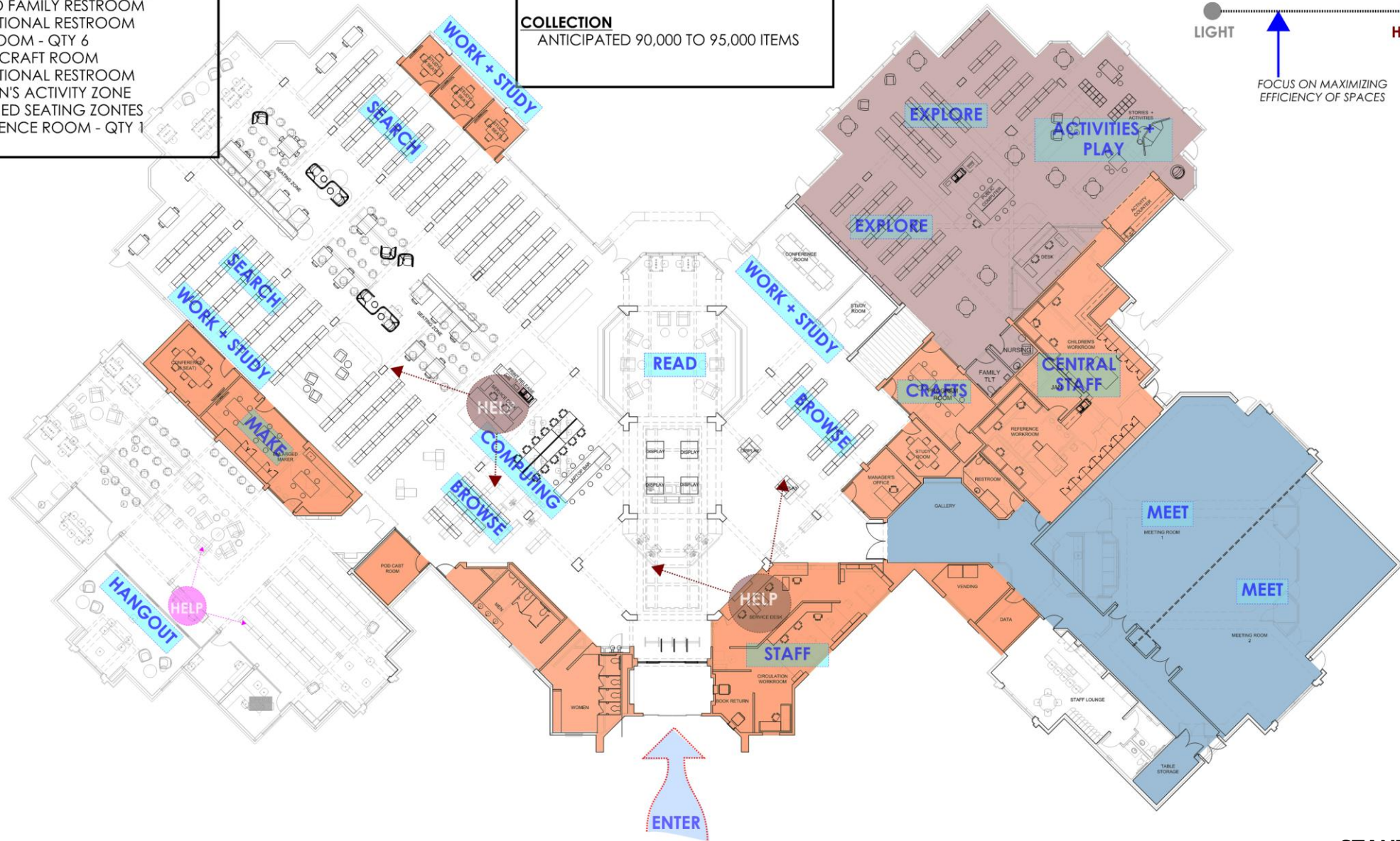
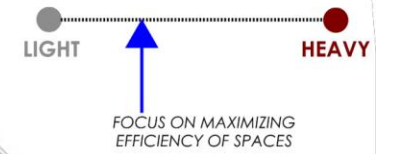
ORIGINAL BRANCH LIBRARY: 37,600 SF

COLLECTION

ANTICIPATED 90,000 TO 95,000 ITEMS

BLUEBONNET LIBRARY CONCEPT PLAN

REORGANIZATION SCALE





CENTRAL BRANCH LIBRARY

PROPOSED EXPANSION / RENOVATION - 2027



CENTRAL BRANCH LIBRARY

Areas of Need:

- Expand Community Meeting Room
- Address meeting room entry (Early Voting Site)
- Centralize staff areas
- Revise Public Restrooms
- Add dedicated Teen Room
- Add Children's Activity Zone
- Add Children's study / tutoring rooms
- Provide seating for adult caregivers to work while supervising children
- Add Maker + Digital Lab
- Add Adult Work / Study rooms
- Add ergonomic power access at public seating areas
- Update furniture configuration to meet patron use

CENTRAL BRANCH LIBRARY CONCEPT PLAN

REORGANIZATION SCALE



EXPANSION AREA

EXPANSION AREA

EXPANSION AREA

KEY STATS:

BUILT 2002

ORIGINAL BRANCH LIBRARY: 18,263 SF

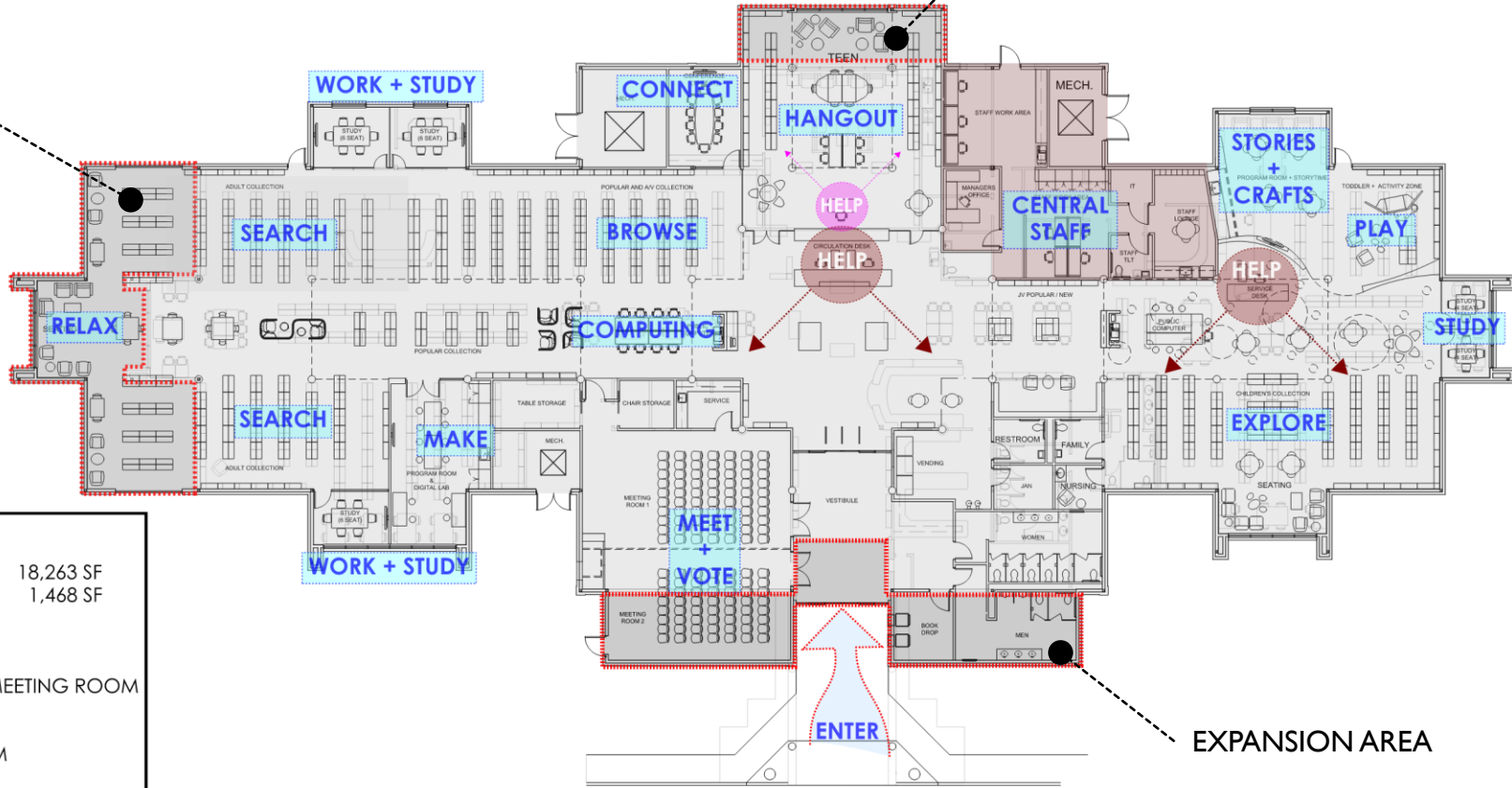
EXPANSION (TWO AREAS): 1,468 SF

IMPROVEMENTS

- STUDY ROOM - QTY 5
- ENLARGED COMMUNITY MEETING ROOM
- CENTRALIZED STAFF AREA
- STORY + CRAFT ROOM
- GENERATIONAL RESTROOM
- FAMILY RESTROOM
- NURSING ROOM
- CHILDREN'S ACTIVITY ZONE
- STUDY PODS - QTY 6
- CONFERENCE ROOM - QTY 1
- DEDICATED TEEN ZONE
- PROGRAM ROOM (DIGITAL + MAKER)

COLLECTION

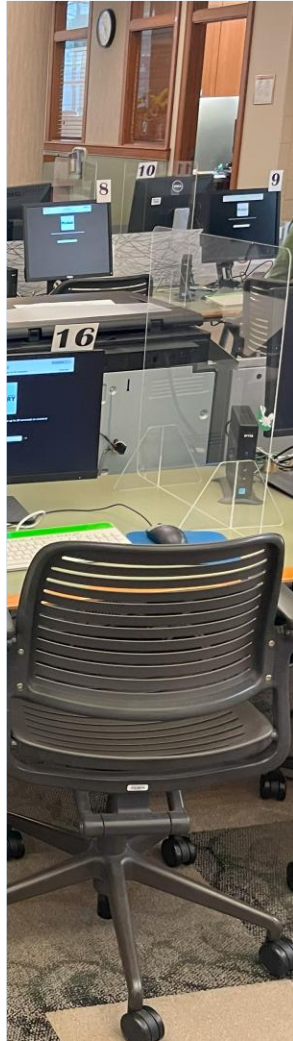
ANTICIPATED 85,000 TO 90,000 ITEMS





ZACHARY BRANCH LIBRARY

PROPOSED EXPANSION / RENOVATION - 2028



ZACHARY BRANCH LIBRARY

Areas of Need:

- Expand Meeting Room (Voting Location)
- Add Work / Study rooms
- Add Digital Lab + Maker room
- Reduce number of public computers – reallocate space
- Consolidate staff areas
- Add ergonomic power access at public seating areas
- Update furniture configuration to meet patron use
- Address book return system (five-bin)
- Add toddler / activity area
- Address acoustics (sound travels in linear plan)
- Assess courtyard use (area for expansion or reconfigure)
- Address storage needs

ZACHARY BRANCH LIBRARY CONCEPT PLAN



KEY STATS:
 BUILT 2004
 ORIGINAL BRANCH LIBRARY: 19,833 SF
 PROPOSED EXPANSION

IMPROVEMENTS

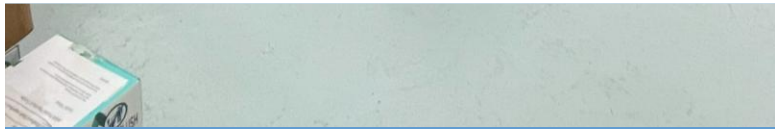
- STUDY ROOM - QTY 4
- STORY + CRAFT ROOM
- GENERATIONAL RESTROOM
- ENLARGED MEETING ROOMS
- CHILDREN'S ACTIVITY ZONE
- DEDICATED TEEN ZONE
- PROGRAM ROOM (DIGITAL + MAKE)
- CONFERENCE ROOM - QTY 1
- CENTRALIZED RESTROOM
- NURSING ROOM
- MAKER + DIGITAL PROGRAM ROOM

COLLECTION
 ANTICIPATED 68,000 TO 80,000 ITEMS



RECYCLED READS / LIBRARY OUTREACH

PHASE II RENOVATION - 2028



RECYCLED READS LIBRARY SUPPORT FACILITY

Areas of Need:

- Current facility does not allow for covered loading and unloading of bookmobile materials.
 - Create covered area at grade level for loading / unloading.
- Current configuration does not allow for parking of equipment at powered locations.
 - Revise south parking area to allow for book mobile maneuverability and parking.
- The shelving and storage layout can be improved to increase efficiency / use of the space.
 - Revise shelving and storage area layouts to maximize use of space.
- Repair Emergency Generator.
- Re-organize office area to meet staff needs and improve workflow.



START LIBRARY

NEW NORTH START BRANCH (EARL K. LONG AREA) – 2029
NEW SOUTH START BRANCH (GARDERE AREA) – 2030

START BRANCH LIBRARY

Vision

- Small footprint library with core services
- 8,000 SF Footprint
- Popular collections
- Access to technology
- Children's Activity Zone
- Meeting Spaces
- Work / Study Rooms + Virtual Conference and Training
- Collection Capacity 25,000 Items



START BRANCH LIBRARY VISION BOARD





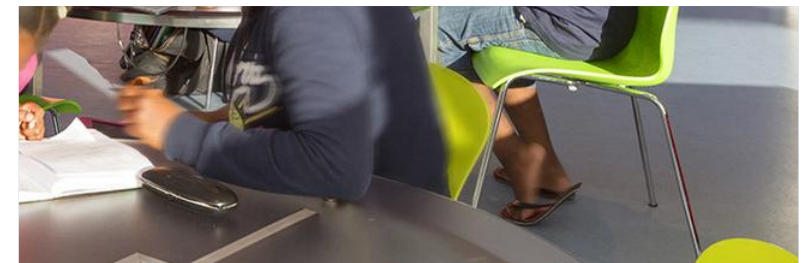
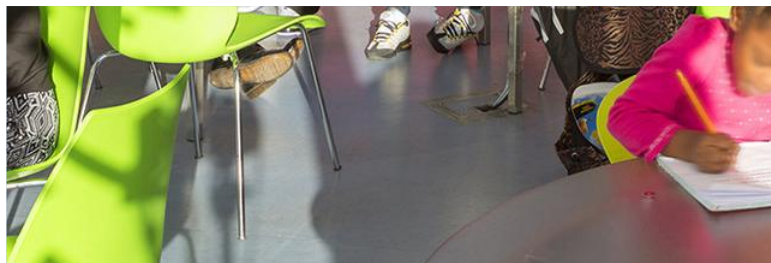
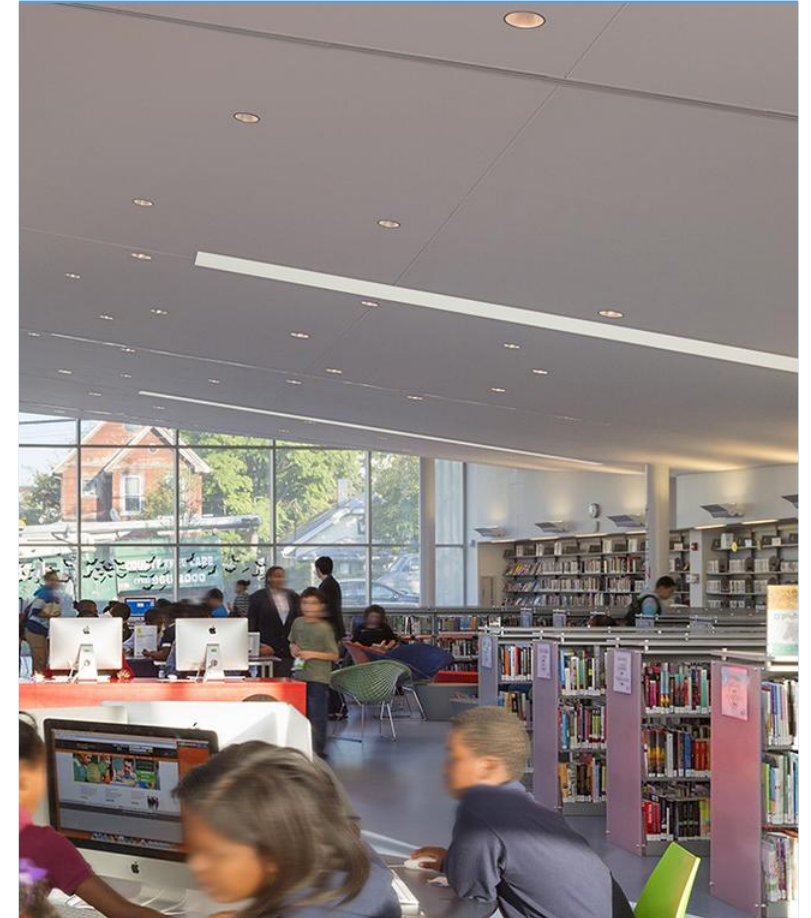
DELMONT GARDENS REPLACEMENT

NEW BRANCH LIBRARY - 2030

DELMONT GARDENS BRANCH LIBRARY REPLACEMENT

Vision

- New library to replace existing branch location
- Location (TBD)
- 22,000 to 25,000 SF
 - Meeting spaces
 - Program rooms
 - Collection
 - Access to technology
 - Work/Study rooms
 - Seating
 - Associated support spaces



DELMONT GARDENS BRANCH LIBRARY

VISION BOARD





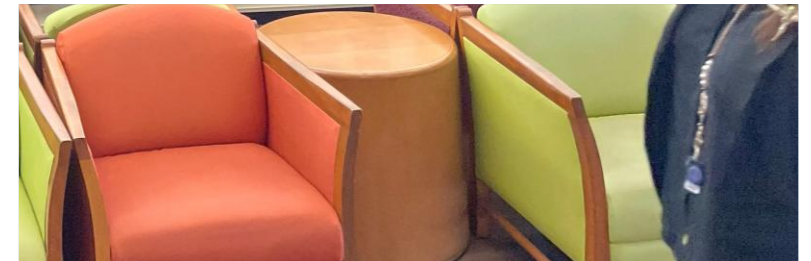
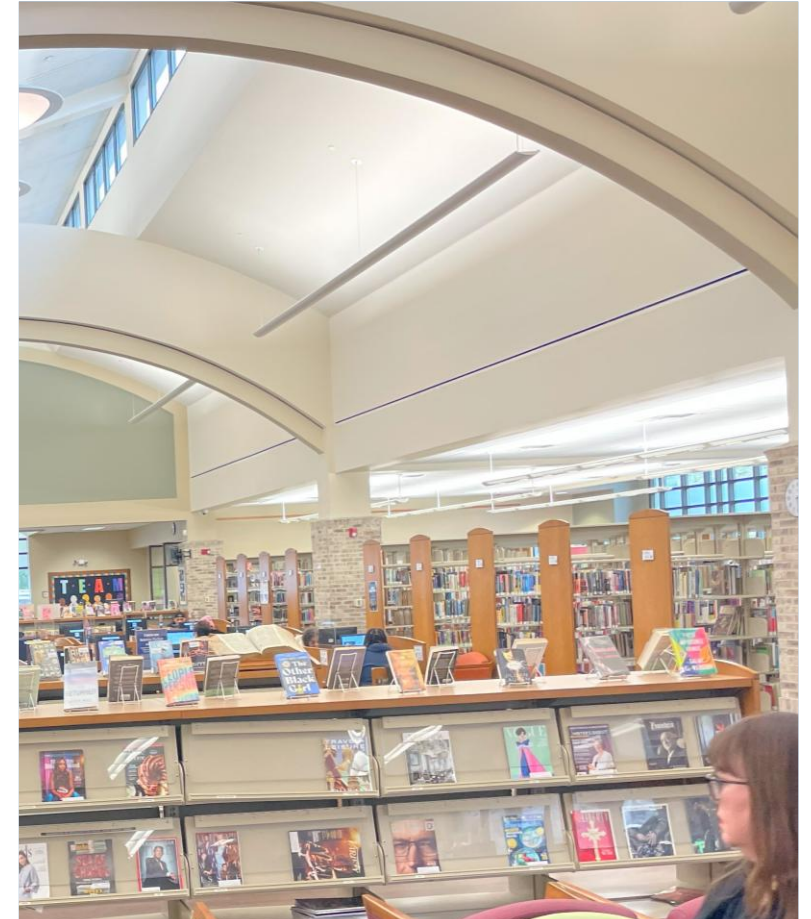
DELMONT BUSINESS INCUBATOR

RENOVATE EXISTING DELMONT GARDENS FACILITY - 2031

DELMONT GARDENS BUSINESS INCUBATOR

Vision:

- Transform a portion of the existing building into a business incubator
- Anticipated Spaces Include
 - Conference rooms
 - Web-based training rooms
 - Virtual Reality simulators
 - Meeting / Training rooms
 - Suites for start-up businesses
 - Access to technology



KEY STATS:

BUILT 1984

RENOVATION 2005

ORIGINAL BRANCH LIBRARY: 19,267 SF

BUSINESS INCUBATOR IMPROVEMENTS

- MEETING ROOMS
- CONFERENCE ROOMS
- WEB BASED TRAINING ROOMS
- VIRTUAL REALITY SIMULATORS
- TRAINING ROOMS
- START-UP BUSINESS SUITES
- TECHNOLOGY AND SEATING
- REMOTE WORK ZONES
- UPDATED PUBLIC RESTROOMS

DELMONT GARDENS BUSINESS INCUBATOR

REORGANIZATION SCALE



FOCUS ON MAXIMIZING
EFFICIENCY OF SPACES



VIRTUAL TRAINING LABS



DRIVE
UNDER
CANOPY
ENTER

BUSINESS INCUBATOR RENOVATION

SEASONAL STORAGE

ENTER



CO WORKING ZONES



MEETING ROOMS



CONFERENCE ROOMS



MAIN LIBRARY

RENOVATION /EXPANSION - 2031

MAIN LIBRARY

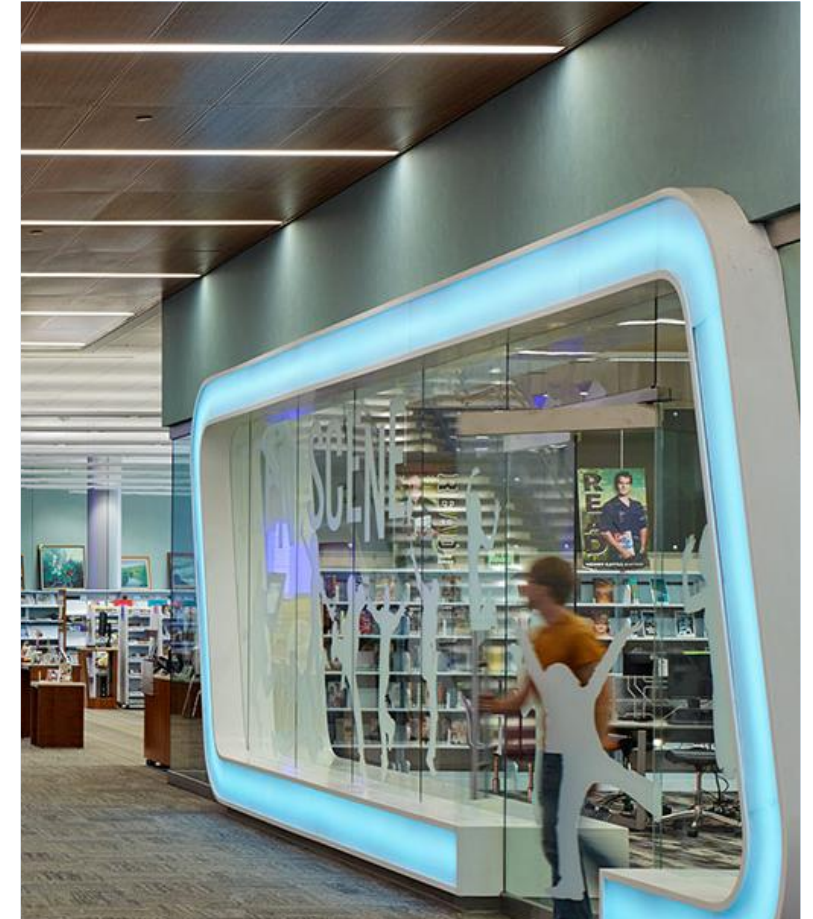
Areas of Need:

Priority I

- Provide additional Handicap Parking
- Update Meeting Room technology
- Add powered furniture where possible
- Provide Generational Restroom
- Add dedicated Digital + Maker Lab
- Expand Career Center

Priority II

- Re-organize Children's Area
- Expand Children's Activity Area
- Provide Nursing Room
- Add Children's Study / Tutor Rooms
- Updated Teen Program Room
- Add Adult Work / Study Rooms
- Re-organize Staff areas



MAIN LIBRARY

First Floor Proposed Changes:

- Upgrade Meeting Room Technology
- Add Study / Tutor Rooms
- Add Nursing Room
- Create Children's Activity Zone
- Reconfigure Children's Service Desk
- Repurpose Career Center into Meeting Room once it is relocated
- Create Copier Niche
- Revise Children's Staff work areas
- Update Teen Program Room




IMPROVEMENTS

- ADD CHILDREN'S STUDY ROOM (3)
- REVISED CHILDREN'S LAYOUT
- NEW CHILDREN'S ACTIVITY ZONE
- NEW NURSING ROOM
- UPDATED CHILDREN'S OFFICE + WORKROOM
- NEW 20 PERSON MEETING ROOM
- UPDATED TEEN PROGRAM ROOM
- NEW SUMMER READING STORAGE
- TECHNOLOGY UPGRADES AT COMMUNITY MEETING ROOM

MAIN LIBRARY CHANGES

REORGANIZATION SCALE

LIGHT  HEAVY

FOCUS ON MAXIMIZING
EFFICIENCY OF SPACES

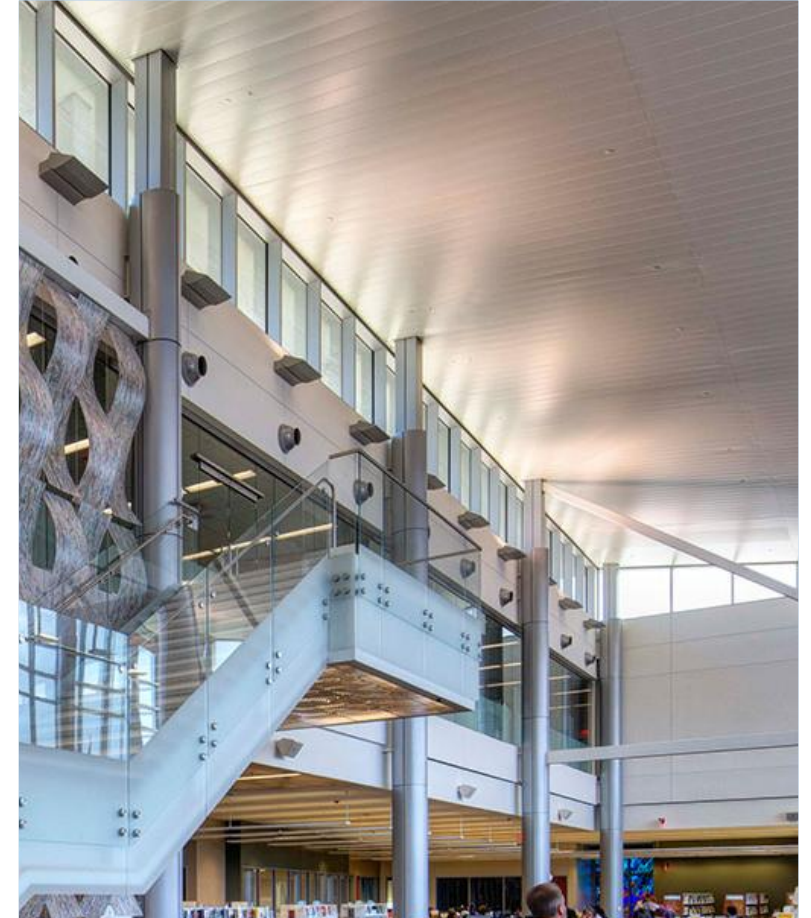


FIRST FLOOR PLAN

MAIN LIBRARY

SECOND FLOOR Areas of Need:

- Add Work / Study Rooms
- Expand Career Center
- Create Digital + Maker Lab
- Reallocate some public computer space




IMPROVEMENTS

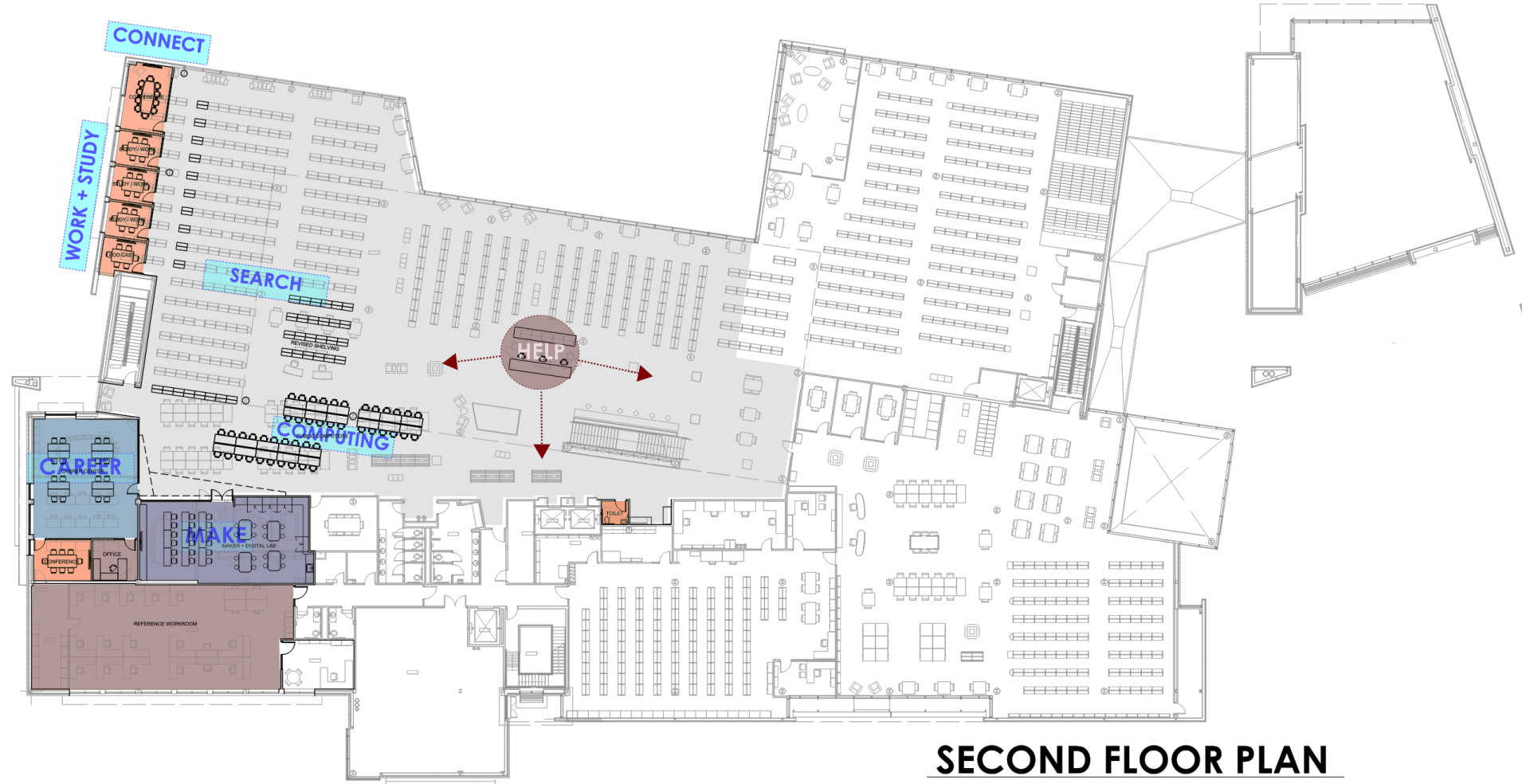
- NEW STUDY ROOMS QTY-3
- NEW PODCAST ROOM
- NEW CONFERENCE ROOM
- ENLARGED CAREER CENTER
- NEW DEDICATED DIGITAL + MAKER ROOM
- REVISED REFERENCE WORKROOM
- REVISED PUBLIC COMPUTER LAYOUT
- UPDATED SERVICE DESK CONFIGURATION

MAIN LIBRARY CHANGES

REORGANIZATION SCALE

LIGHT  HEAVY

FOCUS ON MAXIMIZING
EFFICIENCY OF SPACES

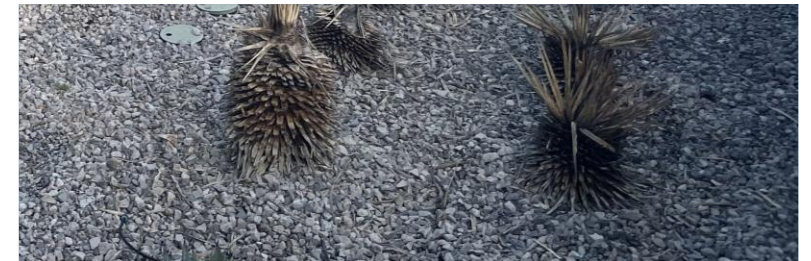


SECOND FLOOR PLAN

MAIN LIBRARY

THIRD FLOOR Areas of Need:

- Expand staff work areas
- Repurpose a portion of staff lounge for work areas
- Add staff restrooms
- Relocate staff areas from first and second floors

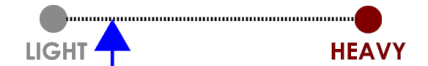


IMPROVEMENTS

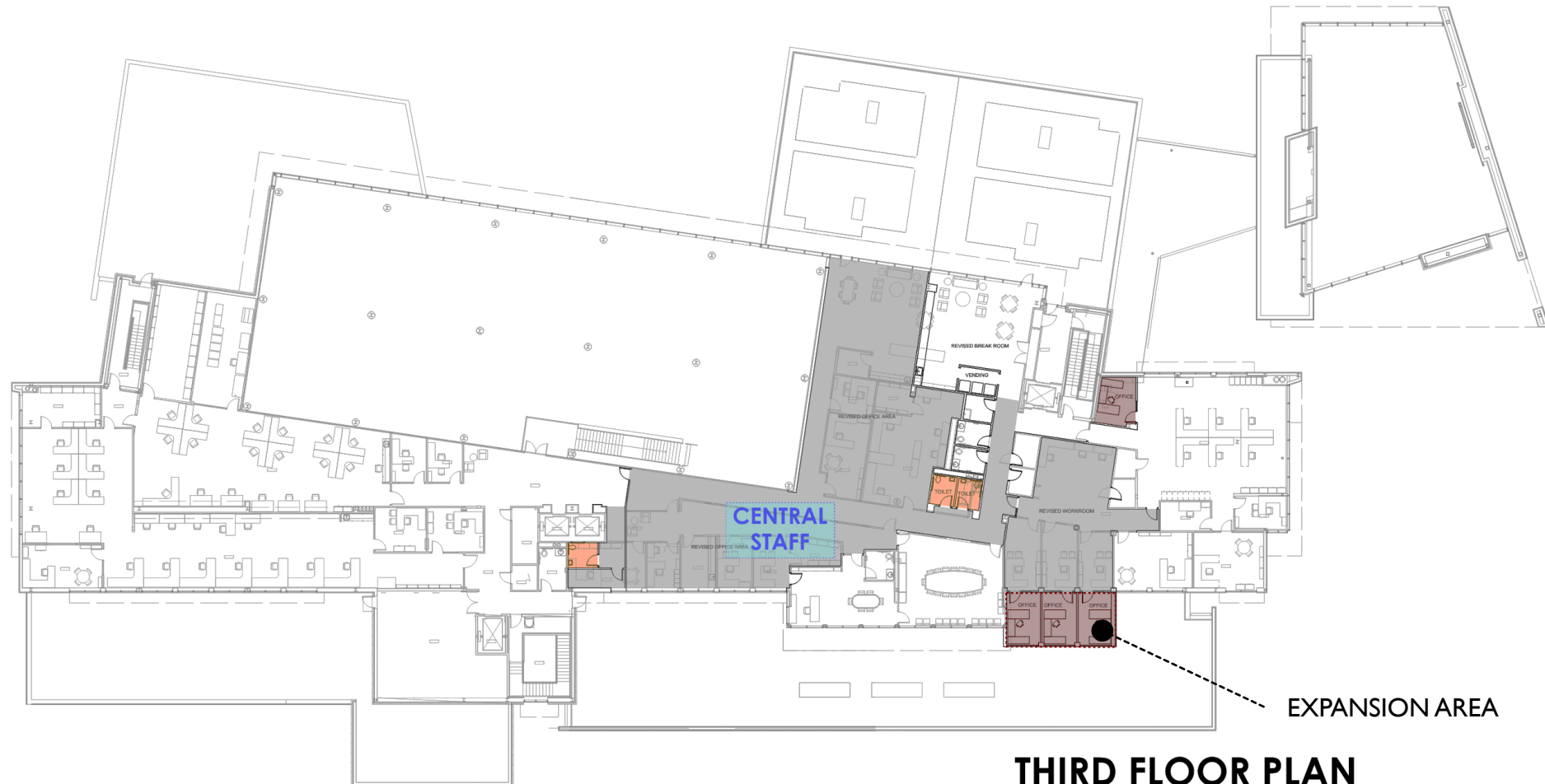
- RE-ORGANIZE EXISTING STAFF AREA
- CONVERT PART OF STAFF LOUNGE TO WORKSPACE
- NEW OFFICE EXPANSION
- ADD STAFF RESTROOMS
- ADD OFFICE IN BUSINESS OFFICE
- UPDATED BRANCH SERVICES WORKROOM

MAIN LIBRARY CHANGES

REORGANIZATION SCALE



FOCUS ON MAXIMIZING
EFFICIENCY OF SPACES



THIRD FLOOR PLAN



CARVER BRANCH LIBRARY

RENOVATION / EXPANSION - 2033



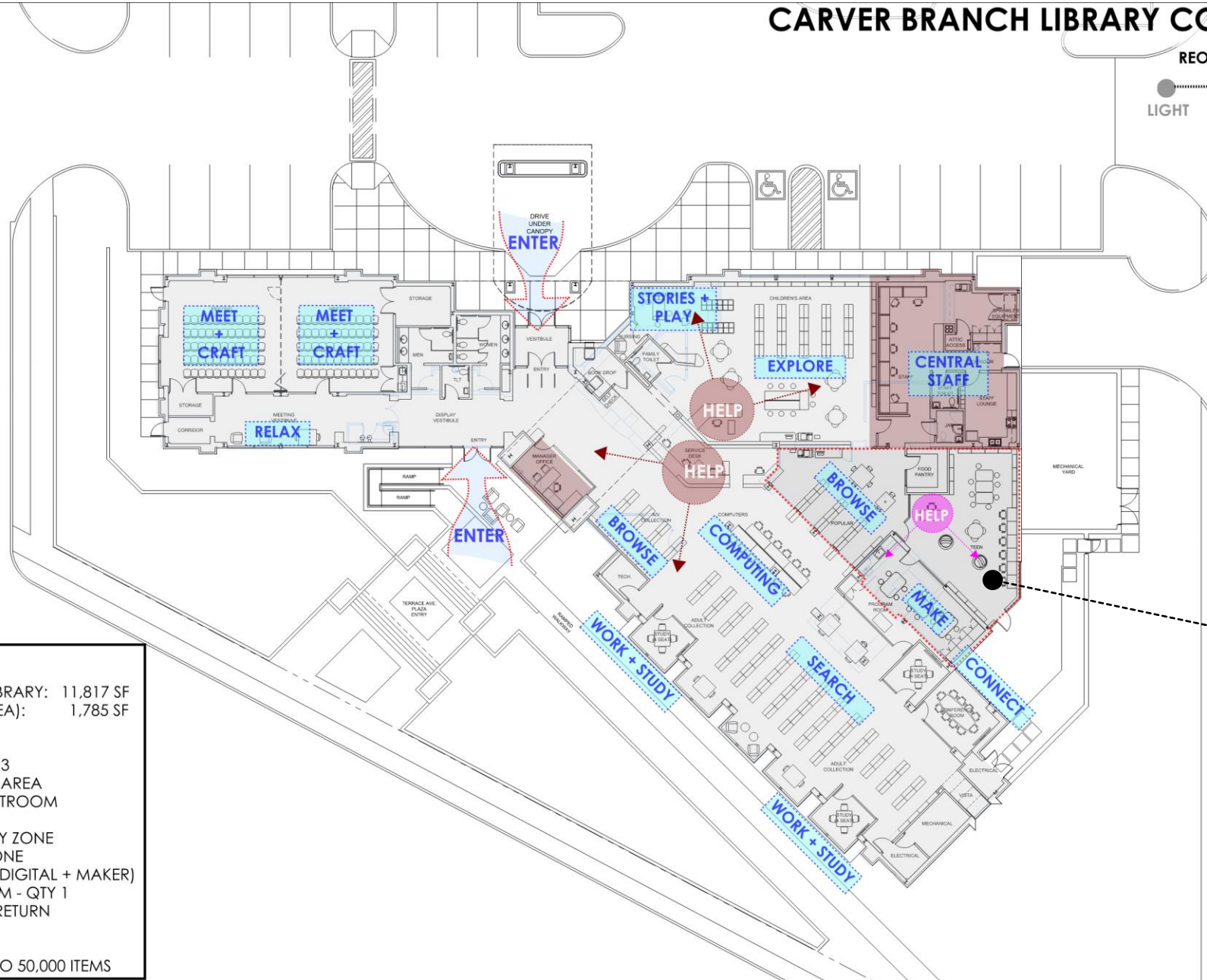
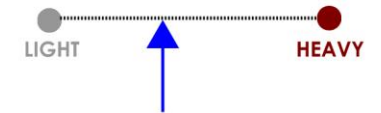
CARVER BRANCH LIBRARY

Areas of Need:

- Reallocate public computer space
- Provide additional Work / Study rooms
- Reconfigure service desks
- Upgrade meeting room technology
- Reallocate courtyard space for additional program and seating needs
- Centralize Staff Area
- Add ergonomic power access at public seating areas
- Update furniture configuration to meet patron use
- Provide Maker + Digital Lab
- Update material return
- Add Generational Restroom
- Improve space for the Community Food Pantry

CARVER BRANCH LIBRARY CONCEPT PLAN

REORGANIZATION SCALE



EXPANSION AREA

KEY STATS:

BUILT 2005
ORIGINAL BRANCH LIBRARY: 11,817 SF
EXPANSION (ONE AREA): 1,785 SF

IMPROVEMENTS

- STUDY ROOM - QTY 3
- CENTRALIZED STAFF AREA
- GENERATIONAL RESTROOM
- VESTIBULE
- CHILDREN'S ACTIVITY ZONE
- DEDICATED TEEN ZONE
- PROGRAM ROOM (DIGITAL + MAKER)
- CONFERENCE ROOM - QTY 1
- REVISED MATERIAL RETURN

COLLECTION

ANTICIPATED 40,000 TO 50,000 ITEMS



PRIDE-CHANEYVILLE BRANCH LIBRARY

RENOVATION - 2033

PRIDE-CHANEYVILLE BRANCH LIBRARY

Areas of Need:

Priority I

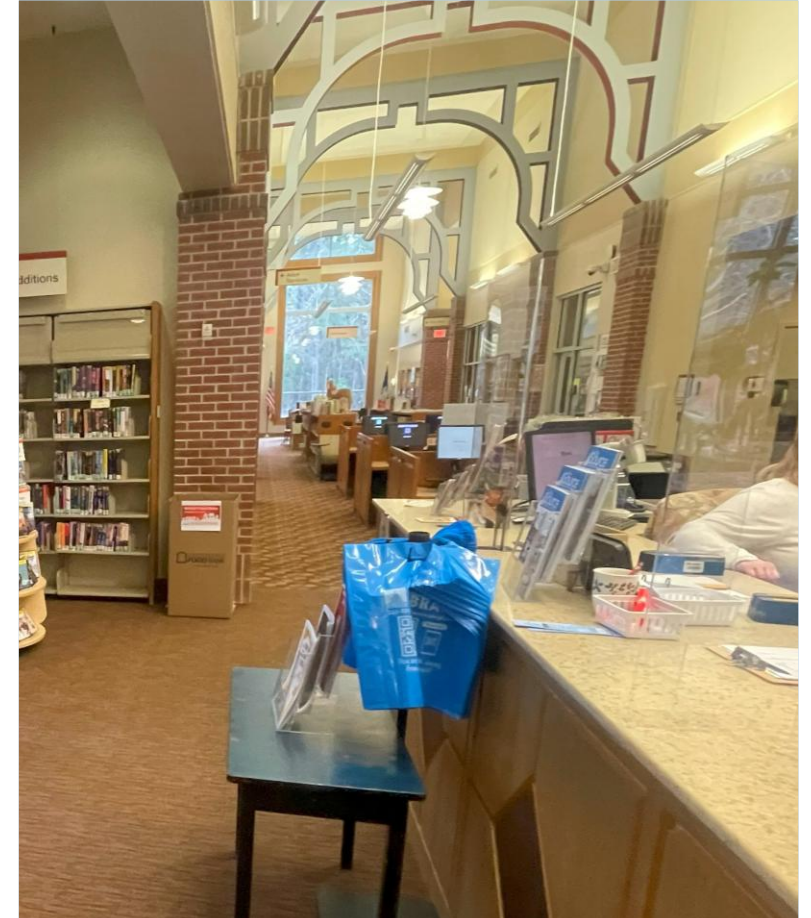
- Create Vestibule Entry
- Add Generational Restroom
- Update Material Return Configuration

Priority II

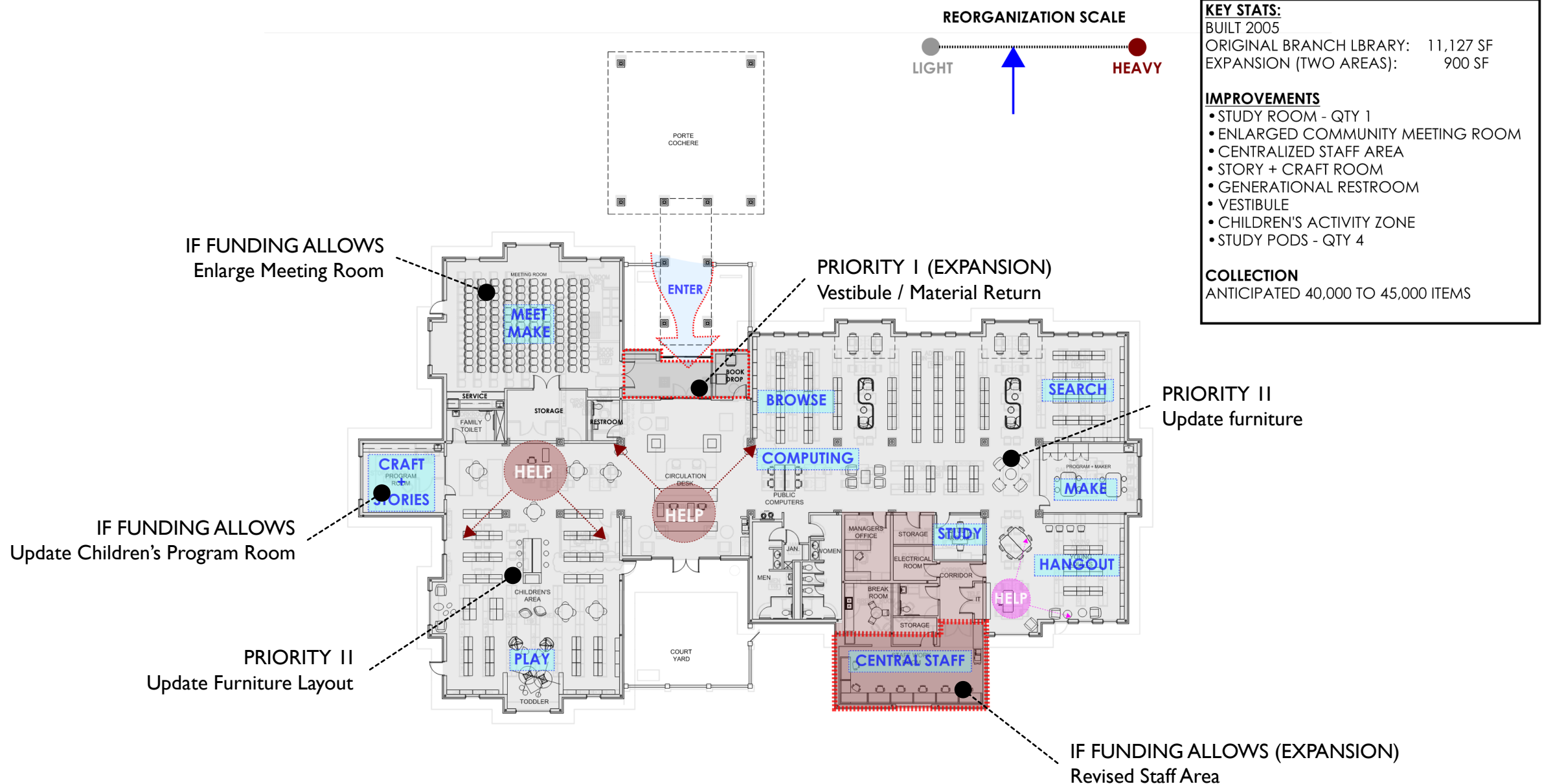
- Update furniture layout
- Add Work / Study spaces
- Create Maker area

Changes if future funding allows:

- Centralize Staff Area
- Enlarge Meeting Room
- Update Children's program room



PRIDE-CHANEYVILLE BRANCH LIBRARY CONCEPT PLAN





EDEN PARK BRANCH LIBRARY

RENOVATION - 2034

EDEN PARK BRANCH LIBRARY

Areas of Need:

Priority I

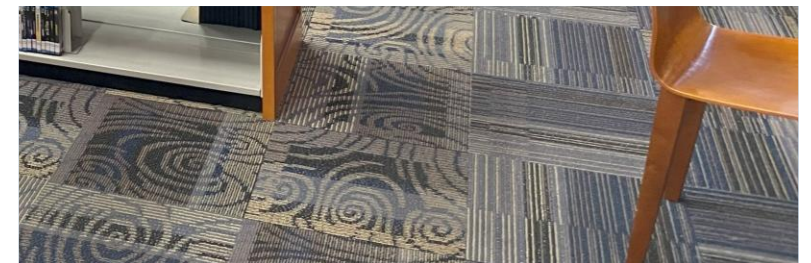
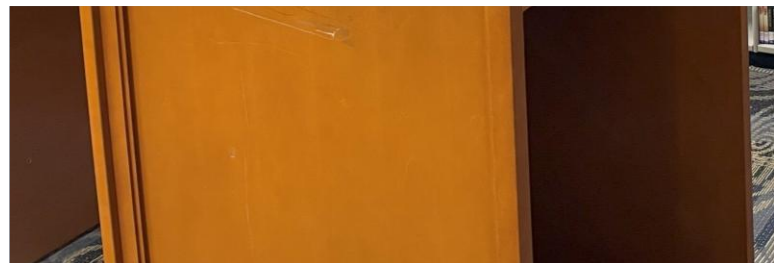
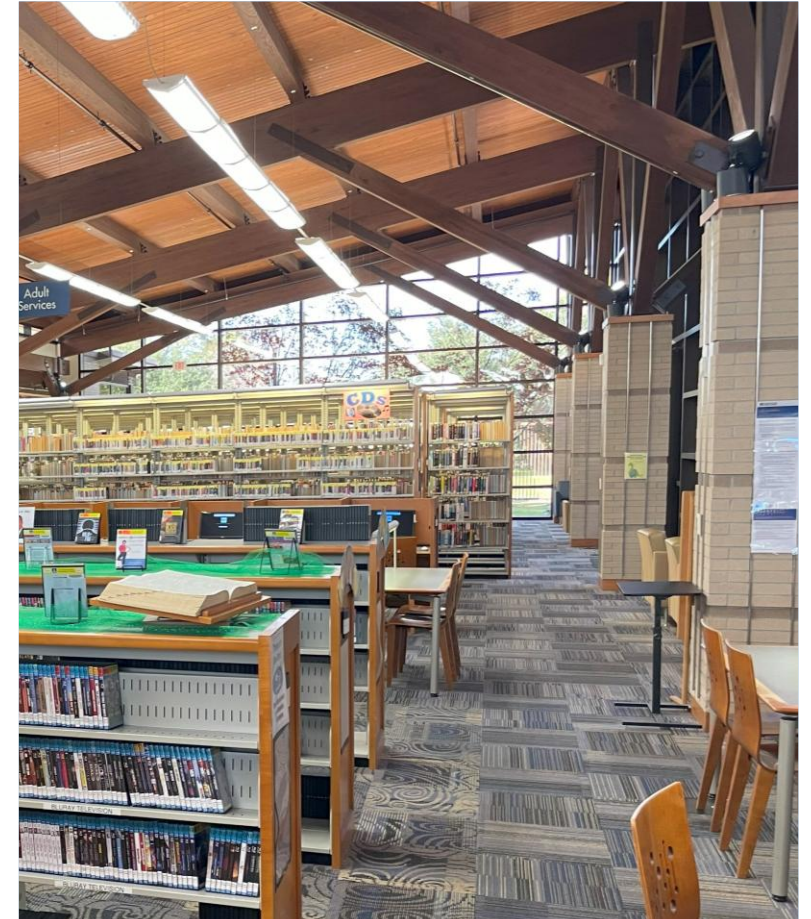
- Add Work / Study Rooms
- Enclose Staff Work Spaces
- Reconfigure Service Desks
- Update Furniture Configuration
- Enclose Children's Area

Priority II

- Enclose Teen Area

Changes if future funding allows:

- Expand Children's Area
- Add Dedicated Digital + Maker Room



EDEN PARK BRANCH LIBRARY CONCEPT PLAN

KEY STATS:

BUILT 2007

ORIGINAL BRANCH LIBRARY: 15,000 SF

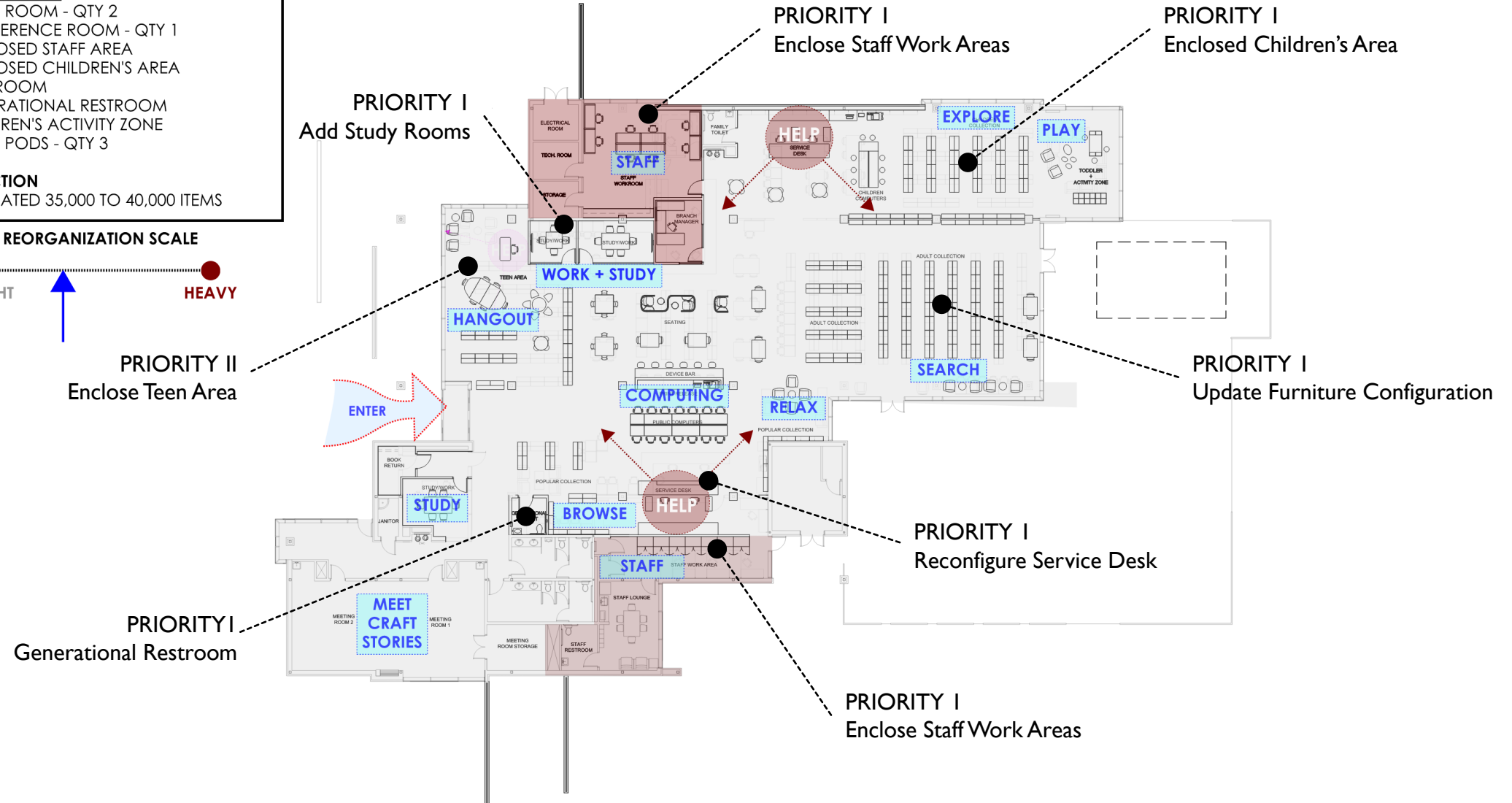
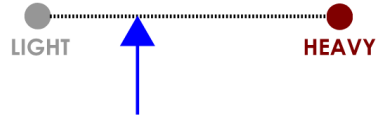
IMPROVEMENTS

- STUDY ROOM - QTY 2
- CONFERENCE ROOM - QTY 1
- ENCLOSED STAFF AREA
- ENCLOSED CHILDREN'S AREA
- TEEN ROOM
- GENERATIONAL RESTROOM
- CHILDREN'S ACTIVITY ZONE
- STUDY PODS - QTY 3

COLLECTION

ANTICIPATED 35,000 TO 40,000 ITEMS

REORGANIZATION SCALE





FAIRWOOD BRANCH LIBRARY

RENOVATION / EXPANSION - 2034



FAIRWOOD BRANCH LIBRARY

Areas of Need:

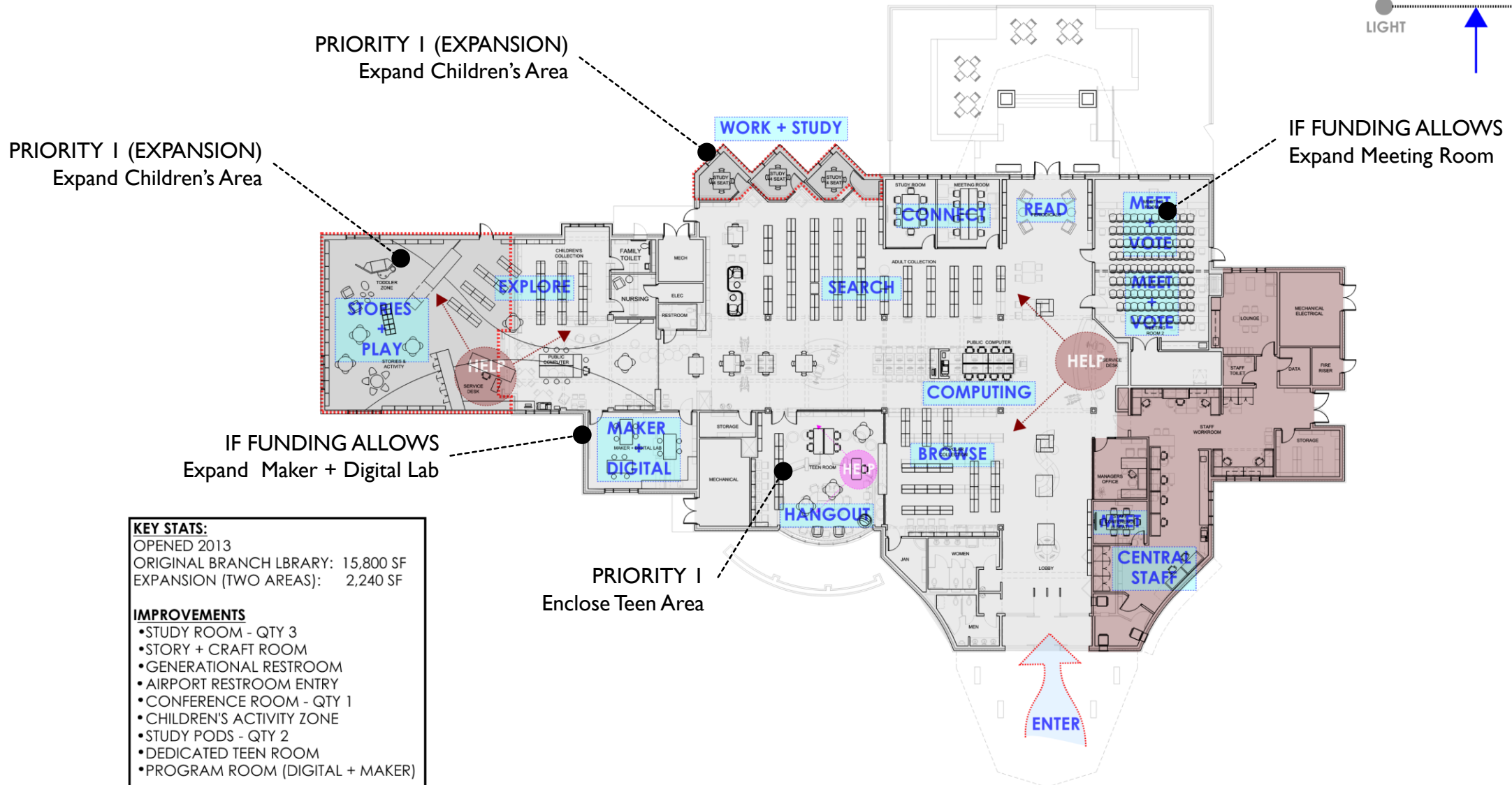
- Upgrade Meeting Room Technology
- Remove computers at entry
- Reallocate public computer space
- Updated public restroom entry
- Create children's activity zone
- Provide additional Work / Study rooms
- Revise Teen area / computers
- Remove casters from children's collection
- Add ergonomic power access at public seating areas
- Upgrade Material Return

If future funding allows:

- Expand Maker + Digital Lab
- Enlarge Meeting Rooms

FAIRWOOD BRANCH LIBRARY CONCEPT PLAN

REORGANIZATION SCALE



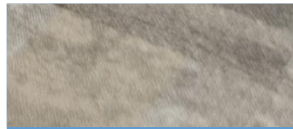
KEY STATS:
 OPENED 2013
 ORIGINAL BRANCH LIBRARY: 15,800 SF
 EXPANSION (TWO AREAS): 2,240 SF

IMPROVEMENTS
 •STUDY ROOM - QTY 3
 •STORY + CRAFT ROOM
 •GENERATIONAL RESTROOM
 •AIRPORT RESTROOM ENTRY
 •CONFERENCE ROOM - QTY 1
 •CHILDREN'S ACTIVITY ZONE
 •STUDY PODS - QTY 2
 •DEDICATED TEEN ROOM
 •PROGRAM ROOM (DIGITAL + MAKER)

COLLECTION
 ANTICIPATED 40,000 TO 45,000 ITEMS



RECENTLY COMPLETED BRANCH LIBRARIES
NO MAJOR CHANGES PROPOSED



RECENTLY COMPLETED

- Scotlandville Branch Library
 - Starting Major Expansion Renovation 2025
- South Branch Library
 - Recently completed – No major improvements anticipated
- River Center Branch Library
 - No major improvements anticipated
- Greenwell Springs Road Regional Library
 - Upgrade meeting room technology
 - Update material return (Smart + Manual)
- Jones Creek Regional Library
 - Convert computer lab to Digital + Maker space
 - Upgrade meeting room flooring
 - Update material return (Smart + Manual)
 - Reduce the number of public computers – recapture for seating



ITEM IV – ESTIMATED COST

PRELIMINARY COST PROJECTIONS

EAST BATRON ROUGE PARISH LIBRARY SYSTEM

Branch Library Facility Assessments - Estimated Project Costs

BRANCH	FURNITURE UPGRADES	TECHNOLOGY UPGRADES	CONSTRUCTION COST	TOTAL COST 2025 DOLLARS	ANTICIPATED START	ESTIMATED COST AT CONSTRUCTION START
Baker Branch*	\$ 880,000.00	\$ 369,000.00	\$ 7,680,885.00	\$ 9,070,536.00	2026	\$ 9,524,063.00
Bluebonnet Regional*	\$ 380,000.00	\$ 369,000.00	\$ 7,624,221.00	\$ 8,441,327.00	2026	\$ 8,863,393.00
Central Branch	\$ 710,000.00	\$ 352,800.00	\$ 6,269,063.00	\$ 7,467,597.00	2027	\$ 8,214,357.00
Zachary Branch	\$ 969,000.00	\$ 429,000.00	\$ 8,766,658.00	\$ 10,417,154.00	2028	\$ 11,979,727.00
Re-Cycled Reads Outreach Center	\$ 150,000.00	\$ 30,000.00	\$ 2,960,396.00	\$ 3,328,124.00	2028	\$ 3,827,343.00
START Library North	\$ 328,000.00	\$ 152,000.00	\$ 4,434,049.00	\$ 5,095,392.00	2029	\$ 6,006,470.00
START Library South	\$ 328,000.00	\$ 152,000.00	\$ 4,434,049.00	\$ 5,095,392.00	2030	\$ 6,256,740.00
Delmont Gardens Land Purchase				\$ 600,000.00		\$ 600,000.00
Delmont Gardens New Facility	\$ 836,000.00	\$ 310,000.00	\$ 13,166,320.00	\$ 14,312,320.00	2030	\$ 17,890,400.00
Delmont Gardens Business Incubator	\$ 280,000.00	\$ 215,000.00	\$ 5,448,751.00	\$ 6,129,763.00	2031	\$ 7,968,692.00
Main Library	\$ 980,000.00	\$ 489,000.00	\$ 11,632,354.00	\$ 13,495,219.00	2031	\$ 17,543,785.00
Carver Branch	\$ 405,300.00	\$ 317,000.00	\$ 3,411,689.00	\$ 4,084,178.00	2033	\$ 5,513,640.00
FINAL SCOPE OF WORK TO BE DETERMINED BASED ON AVAILALBE FUNDING FOR THE FOLLOWING PROJECTS						
Pride - Chaneyville Branch	\$ 500,800.00	\$ 195,000.00	\$ 2,002,686.00	\$ 2,630,794.00	2033	\$ 3,683,112.00
Eden Park Branch	\$ 608,200.00	\$ 292,400.00	\$ 2,088,703.00	\$ 2,735,672.00	2034	\$ 3,966,724.00
Fairwood Branch	\$ 380,400.00	\$ 339,000.00	\$ 4,350,888.00	\$ 5,062,478.00	2034	\$ 6,328,098.00
NO MAJOR IMPROVEMENT ANTICIPATED FOR THE FOLLOWING PROJECTS						
Greenwell Springs Road Regional						
Jones Creek Regional						
River Center Branch						
South Branch						
Scotlandville Branch						