

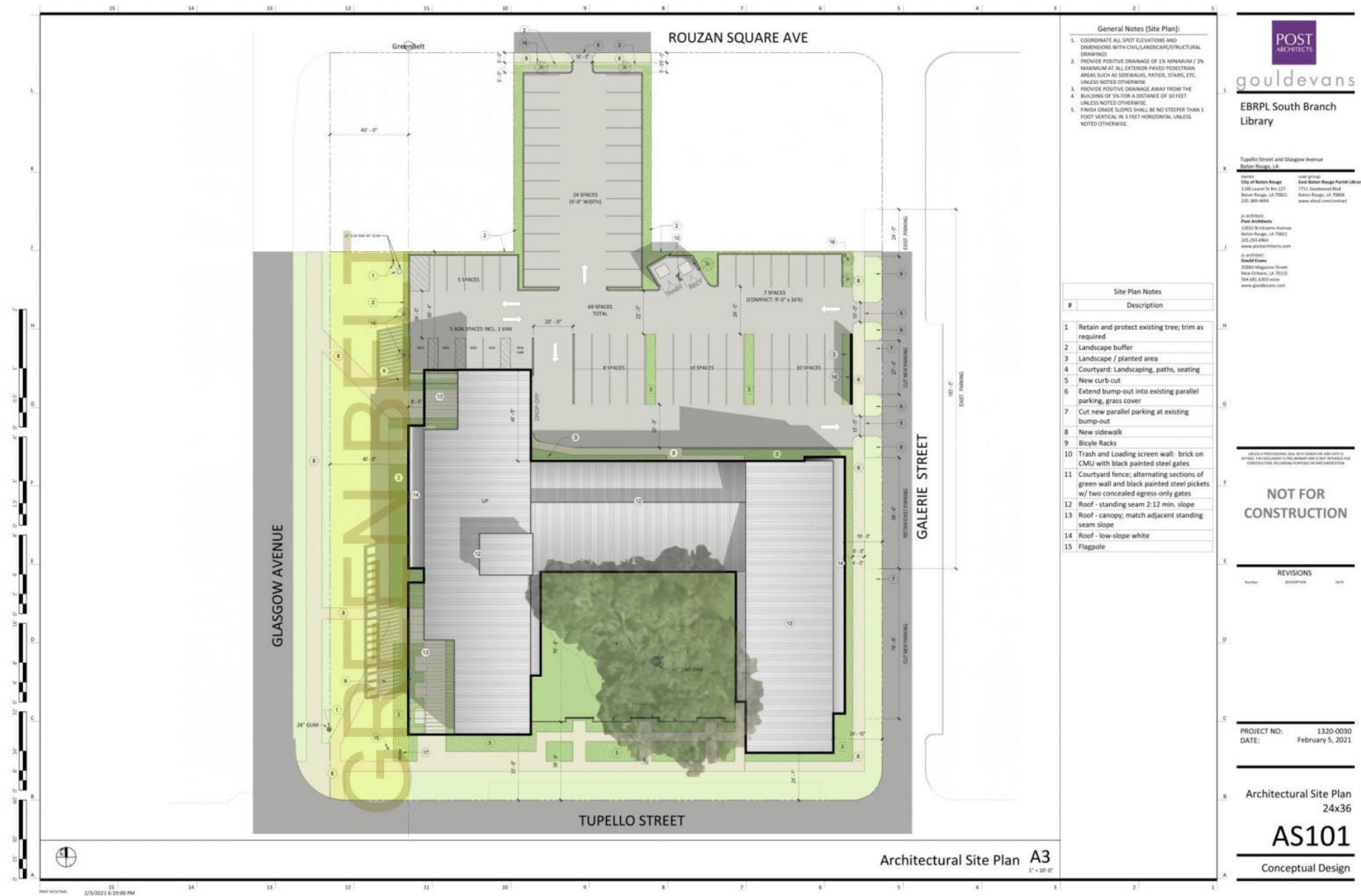


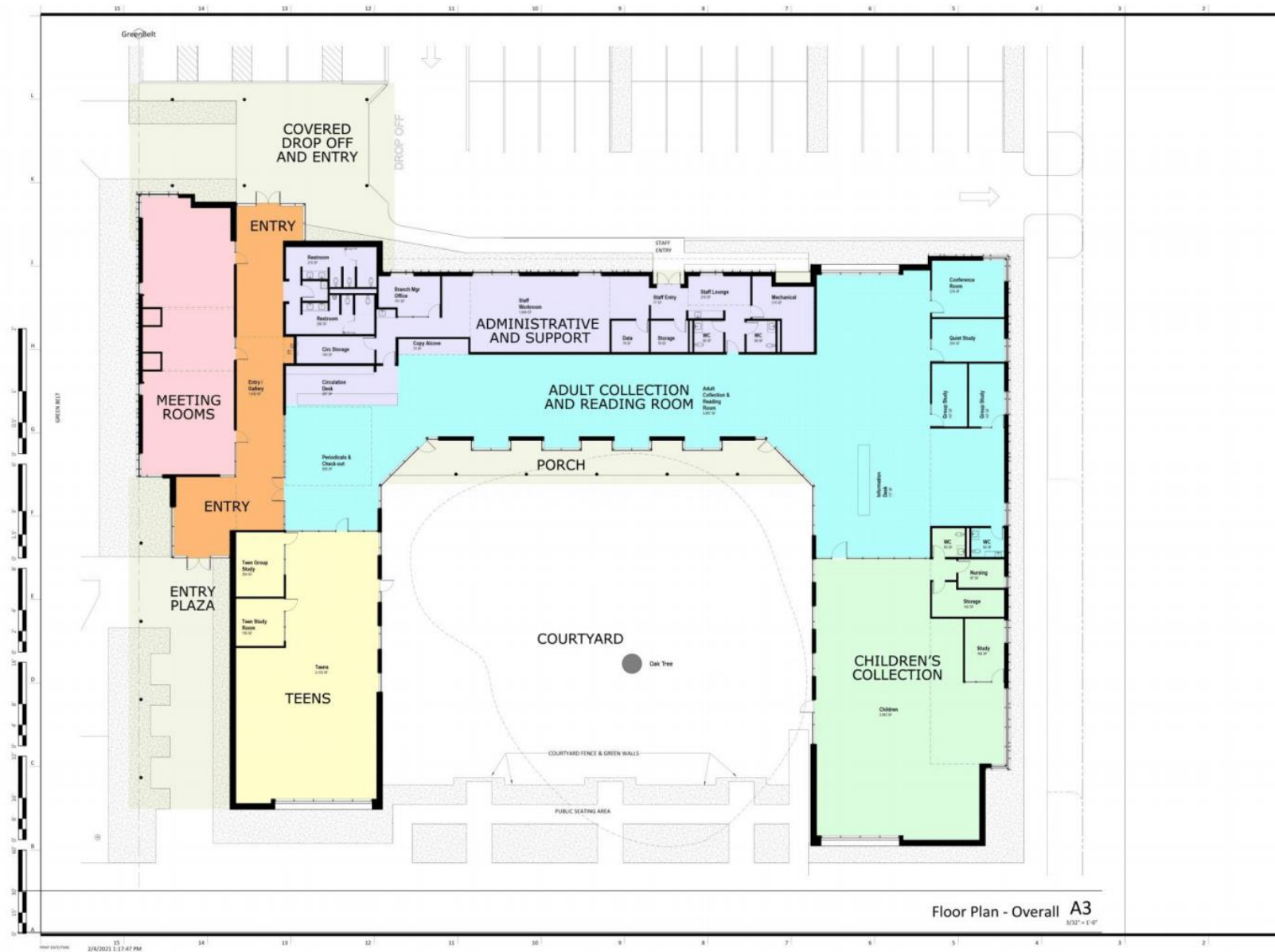
SOUTH BRANCH LIBRARY

Concept Design
March, 2021



gouldevans





POST ARCHITECTS

gould evans

EBRPL South Branch Library

Location: Tupper Street and Glasgow Avenue, Baton Rouge, LA

Client: City of Baton Rouge, 1300 Laurel St. Box 127, Baton Rouge, LA 70801, 225-389-4644

Architect: Post Architects, 12015 Buckhorn Avenue, Baton Rouge, LA 70801, 225-389-4644, www.postarchitects.com

Interior Designer: Gould Evans, 2800 Magazine Street, New Orleans, LA 70112, 504-581-6323, www.gould-evans.com

NOT FOR CONSTRUCTION

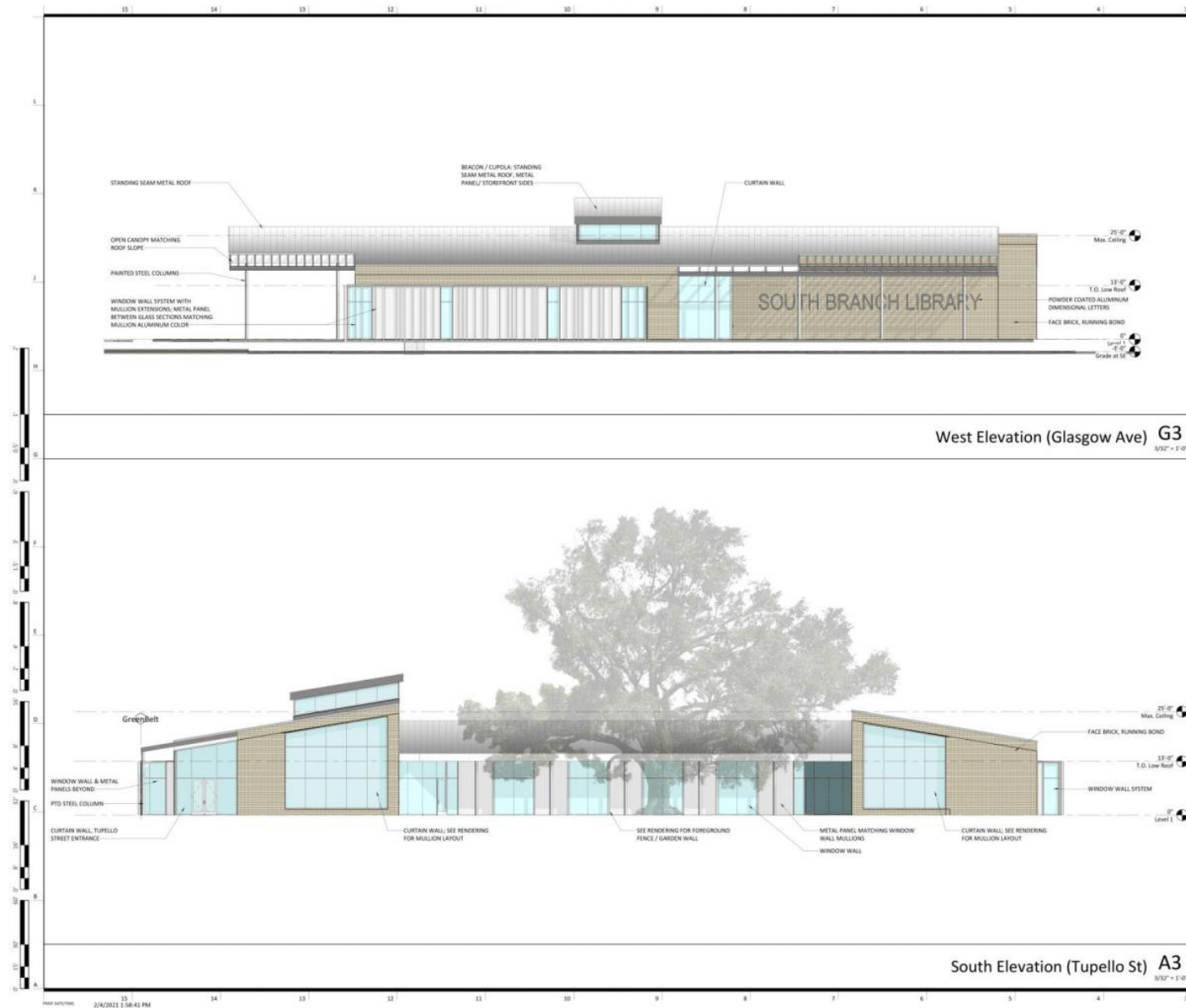
REVISIONS		
Number	Description	Date

PROJECT NO: 1320-0030
DATE: February 5, 2021

Floor Plan - 24x36

A100

Conceptual Design



POST ARCHITECTS
gould evans

EBRPL South Branch Library

Tupello Street and Glasgow Avenue
Baton Rouge, LA

Owner:
City of Baton Rouge
1300 Laurel St Box 127
Baton Rouge, LA 70821
225.389.4654

Architect:
Post Architects
13032 Brinkman Avenue
Baton Rouge, LA 70821
225.215.4964
www.postarchitects.com

Design Team:
Gould Evans
8008 Magazine Street
New Orleans, LA 70112
504.581.6333 voice
www.gould-evans.com

Structural Engineer:
Eva Roubin
123 Acapwood
Baton Rouge, LA 70802
000.000.0000
www.veetech.com

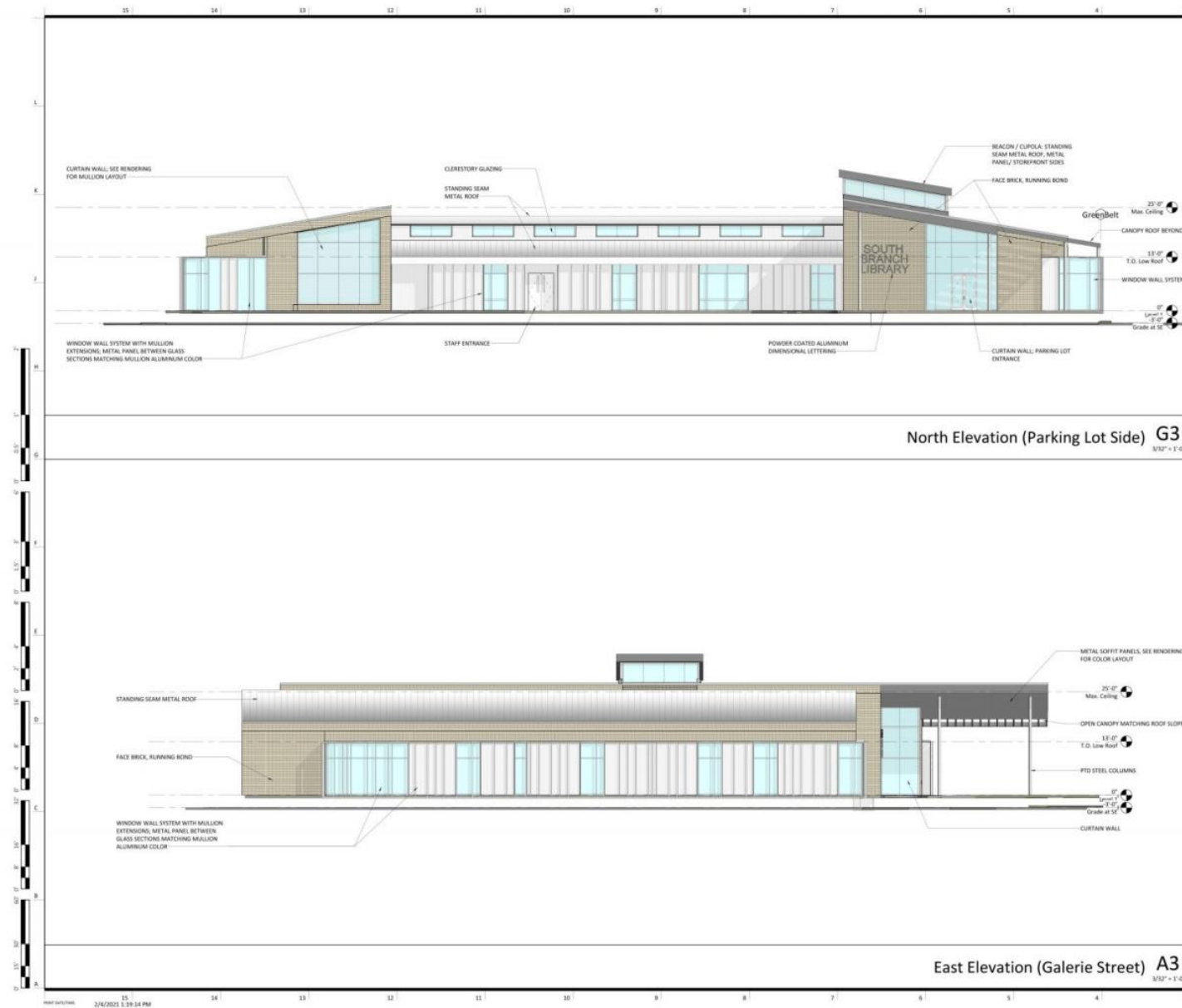
Civil Engineer & Landscape Architect:
L&L Group
123 Acapwood
Baton Rouge, LA 70802
000.000.0000
www.veetech.com

Mechanical/Electrical Engineer:
BET Engineers
123 Acapwood
Baton Rouge, LA 70802
000.000.0000
www.veetech.com

Library Technology Consultant:
Carson Black
123 Acapwood
Baton Rouge, LA 70802
000.000.0000
www.veetech.com

PROJECT NO: 1320-0030
DATE: February 5, 2021

Exterior Elevations - 24x36
A210
Conceptual Design



- General Notes (Exterior Elevations):**
1. MATERIALS AND FINISHES INDICATED APPLY TO ALL SIMILAR ELEMENTS.
 2. COORDINATE EXTERIOR LIGHTING FIXTURE TYPES AND LOCATIONS WITH ELECTRICAL DRAWINGS.

POST
ARCHITECTS
goulddevans

EBRPL South Branch Library

Truett Street and Glasgow Avenue
Baton Rouge, LA

Owner:
City of Baton Rouge
1585 Canal St. Box 227
Baton Rouge, LA 70802
225-389-4004

User Group:
East Baton Rouge Parish Library
7713 Government Blvd
Baton Rouge, LA 70805
www.ebrpl.com/contact

Architect:
Post Architects
13832 Bridgeway Avenue
Baton Rouge, LA 70801
225-203-0864
www.postarchitects.com

Architect:
Gould Evans
10504 Magazine Street
New Orleans, LA 70115
504.465.6300
www.gould-evans.com

THIS IS A PRELIMINARY DRAWING. IT IS NOT TO BE USED FOR CONSTRUCTION. ANY CHANGES TO THIS DRAWING ARE TO BE MADE BY THE ARCHITECT. NO PART OF THIS DRAWING IS TO BE REPRODUCED OR TRANSMITTED IN ANY FORM OR BY ANY MEANS, ELECTRONIC OR MECHANICAL, INCLUDING PHOTOCOPYING, RECORDING, OR BY ANY INFORMATION STORAGE AND RETRIEVAL SYSTEM.

**NOT FOR
CONSTRUCTION**

REVISIONS

Number	Description	Date
--------	-------------	------

PROJECT NO: 1320-0030
DATE: February 5, 2021

Exterior Elevations -
24x36

A211

Conceptual Design



NORTH ENTRY FROM PARKING LOT



NORTH ENTRY AND WEST FAÇADE FROM GLASGOW



AERIAL VIEW OF SITE FROM NORTHWEST



AERIAL VIEW OF SITE FROM NORTHWEST



SOUTH ENTRY AND WEST FAÇADE FROM GLASGOW-TUPELLO INTERSECTION



AERIAL VIEW OF SITE FROM SOUTH



SOUTHWEST CORNER (TEENS) AND PARTIAL COURTYARD



TUPELLO STREET SIDEWALK AND COURTYARD GARDEN WALL



PORCH AND COURTYARD