

Thompson Building Energy Solutions, LLC

3071 Teddy Drive, Baton Rouge, LA 70809

Phone 225-490-9583 Fax 225-293-4171

Commissioning Site Visit

Date: December 19, 2012

Project: Independence Park Main Library Baton Rouge, Louisiana

Date Visited: December 19, 2012

OBSERVATIONS

1. HVAC piping and ductwork including duct insulation, Plumbing and Sprinkler piping installation is continuing.
2. CWS and CWR pipe on some air handling units on the 1st and 2nd floor are not protected. Supply and return pipe connections are to be protected at all times. Seal torn plastic covering on air unit.
3. Remove standing water from air unit drain pan.
4. Protect pipe open ends of HVAC, Plumbing, and Sprinkler piping.
5. Various stored materials are not being protected.
6. Repair bent copper pipe water line as needed at future bathroom wall.
7. Cups, cans, plastic bottles and miscellaneous debris is stuck in wall stud spaces at various locations.
8. Refer to pictures attached.

Picture 1



Protect Air Unit Coils Openings

Thompson Building Energy Solutions, LLC

3071 Teddy Drive, Baton Rouge, LA 70809

Phone 225-490-9583 Fax 225-293-4171

Picture 2



Clean over spray from AHU's.

Picture 3



Protect unit opening.

Picture 4



Stored materials not protected.

Picture 5

Thompson Building Energy Solutions, LLC

3071 Teddy Drive, Baton Rouge, LA 70809

Phone 225-490-9583 Fax 225-293-4171



Bent copper pipe

Picture 6



Protect open pipe

Picture 7



Protect open valve.

Thompson Building Energy Solutions, LLC

3071 Teddy Drive, Baton Rouge, LA 70809

Phone 225-490-9583 Fax 225-293-4171

Picture 8



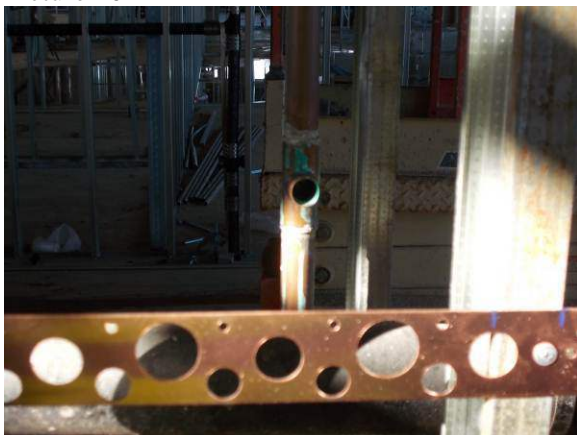
Protect open pipe ends

Picture 9



Protect open ends of pipe.

Picture 10



Water line pipe end not capped

Picture 11

Thompson Building Energy Solutions, LLC

3071 Teddy Drive, Baton Rouge, LA 70809

Phone 225-490-9583 Fax 225-293-4171



Water line pipe end not capped

Picture 12



Protect open pipe.

Picture 13



Protect open pipe and valves.

Thompson Building Energy Solutions, LLC

3071 Teddy Drive, Baton Rouge, LA 70809

Phone 225-490-9583 Fax 225-293-4171

Picture 14



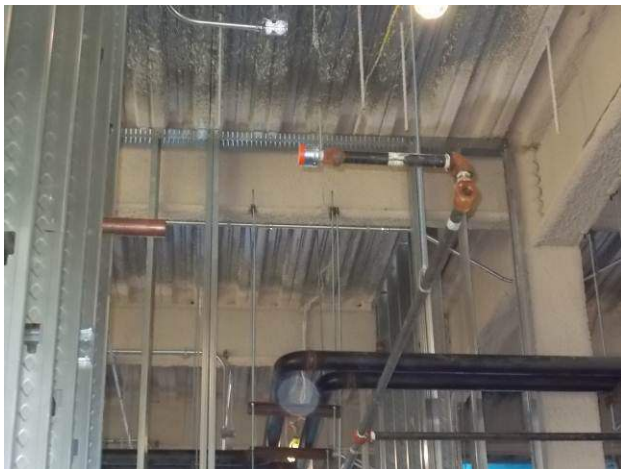
Protect open coil connections.

Picture 15



Over spray on ductwork.

Picture 16



Protect open pipe

Thompson Building Energy Solutions, LLC

3071 Teddy Drive, Baton Rouge, LA 70809

Phone 225-490-9583 Fax 225-293-4171

Picture 17



Protect stored materials.

Picture 18



Construction dirt on valve assembly. Protect stored material.

Picture 19



Protect stored materials.

Thompson Building Energy Solutions, LLC

3071 Teddy Drive, Baton Rouge, LA 70809

Phone 225-490-9583 Fax 225-293-4171

Picture 20



Temp pipe cap broken.

Picture 21



Clean cans, cigarette pack, debris from wall framing prior to installing sheet rock.

Picture 22



Stored materials not protected.

Picture 23

Thompson Building Energy Solutions, LLC

3071 Teddy Drive, Baton Rouge, LA 70809

Phone 225-490-9583 Fax 225-293-4171



Remove paper bucket from inside flex connection on pump. Use proper materials for protecting pump opening.

Picture 24



see next picture.

Picture 25



Protect stored valve. Clean before installation. Also

Remove metal washers from inside valve.

Observations made by Michael Perkins – Thompson Building Energy Solutions, LLC