

EAST BATON ROUGE PARISH LIBRARY BRANCH LIBRARY ASSESSMENT PLAN

Presented to the Library Board of Control at its regular monthly Board Meeting on February 19, 2015.

This study shows possibilities and provides us with an idea about potential costs. It is designed to help the Library consider options for improvements and renovations for the future at various branches.

These are concepts only. Each project would be developed on an individual basis.

KEY EXISTING CONDITIONS

- COMPLICATED ORGANIZATION
- INEFFICIENT SERVICE DESKS
- STAFF WORK AREAS LACK FLEXIBILITY
- LIMITED MEETING SPACES
- LACK OF DEDICATED TEEN AREAS

EXISTING CONDITION COMPLICATED ORGANIZATION



EXISTING CONDITION INEFFICIENT SERVICE DESKS



EXISTING CONDITION STAFF WORK AREAS LACK FLEXIBILITY



EXISTING CONDITION LIMITED MEETING SPACE



EXISTING CONDITION

LACK OF DEDICATED TEEN AREAS



ESTABLISHING BENCHMARKS FOR THE FUTURE

THE LIBRARY SHOULD BE...

- USER FRIENDLY
- A PLACE FOR KIDS
- A TEEN HANG OUT
- PROVIDE ACCESS TO TECHNOLOGY
- A PLACE TO MEET
- A PLACE TO STUDY
- A PLACE TO COLLABORATE
- A PLACE TO RELAX
- FLEXIBLE

BENCHMARK... USER FRIENDLY CURRENT



PROPOSED



BENCHMARK... A PLACE FOR KIDS CURRENT



PROPOSED



BENCHMARK... A TEEN HANGOUT

CURRENT



PROPOSED



Lounge Area



Hang out Area



Study Area



Movies

BENCHMARK...

ACCESS TO TECHNOLOGY

CURRENT

PROPOSED



BENCHMARK... A PLACE TO MEET

CURRENT



PROPOSED



BENCHMARK...

A PLACE TO STUDY / WORK

CURRENT

PROPOSED



BENCHMARK... A PLACE TO COLLABORATE

CURRENT

PROPOSED



BENCHMARK... A PLACE TO RELAX

CURRENT

PROPOSED



BENCHMARK... FLEXIBLE CURRENT



PROPOSED



HOW TO CHANGE

LIGHT RENOVATION

- MINOR CHANGES TO BUILDING CONFIGURATION
- EXISTING CONFIGURATION REMAINS
 - EDEN PARK BRANCH LIBRARY
 - PRIDE-CHANEYVILLE BRANCH LIBRARY
 - CARVER BRANCH LIBRARY
 - CENTRAL BRANCH LIBRARY

HEAVY RENOVATION

- MAJOR CHANGES TO BUILDING CONFIGURATION
- NEW CONFIGURATION
 - SCOTLANDVILLE BRANCH LIBRARY
 - DELMONT GARDENS BRANCH LIBRARY
 - ZACHARY BRANCH LIBRARY
 - ZACHARY REGIONAL LIBRARY OPTION
 - BAKER BRANCH LIBRARY
 - BAKER REGIONAL LIBRARY OPTION
 - JONES CREEK REGIONAL LIBRARY
 - GREENWELL SPRINGS ROAD REGIONAL LIBRARY
 - BLUEBONNET REGIONAL LIBRARY

EDEN PARK BRANCH LIBRARY RECOMMENDATIONS

TO REMAIN

- Existing Organization
- Exposed Architectural Framing
- Select Furniture

PROPOSED CHANGES

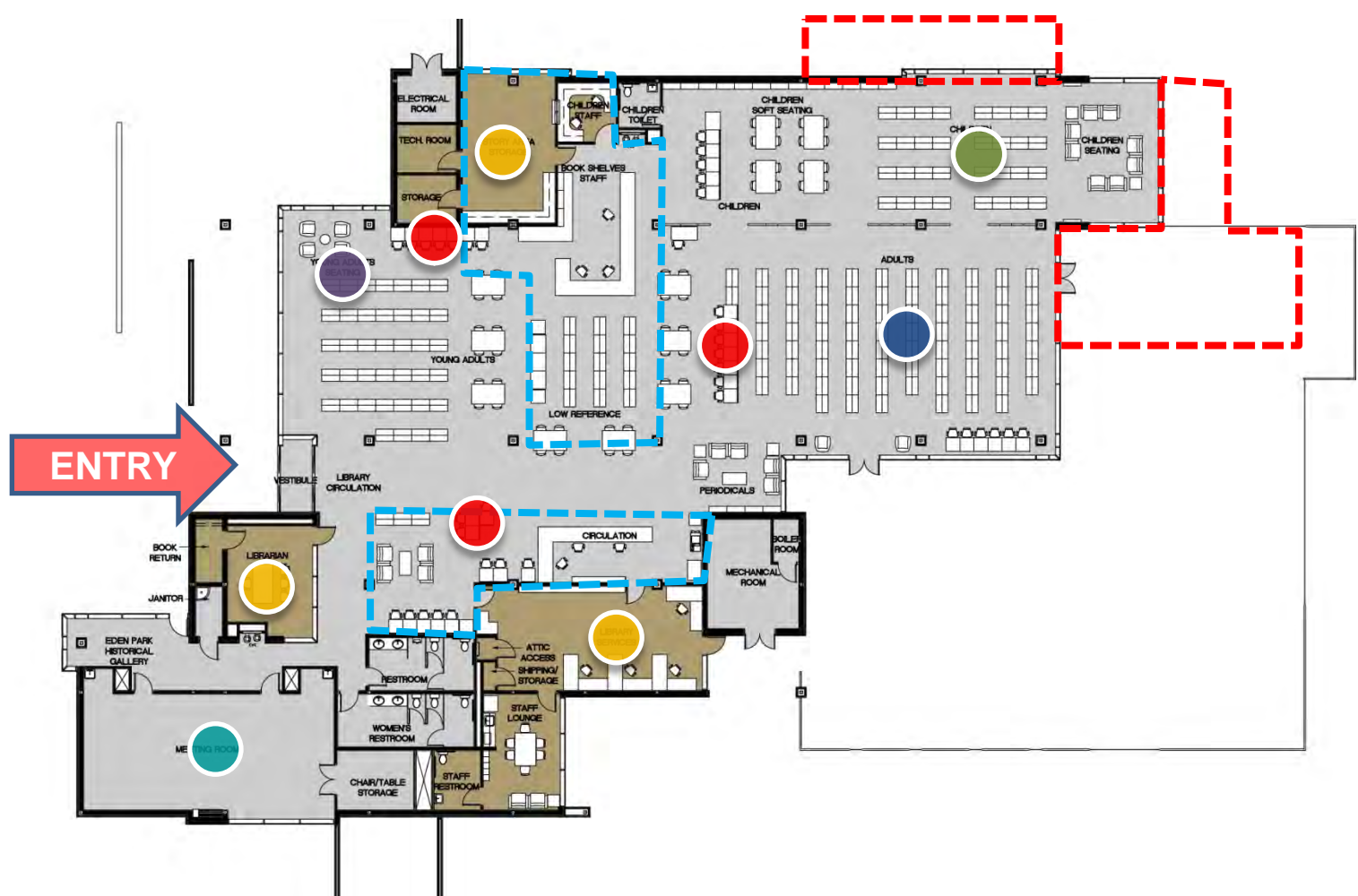
- Reconfigure Shelving
- Consolidate Staff Area
- Increase Program Space
- Create Dedicated Teen Area
- Increase Children's Area



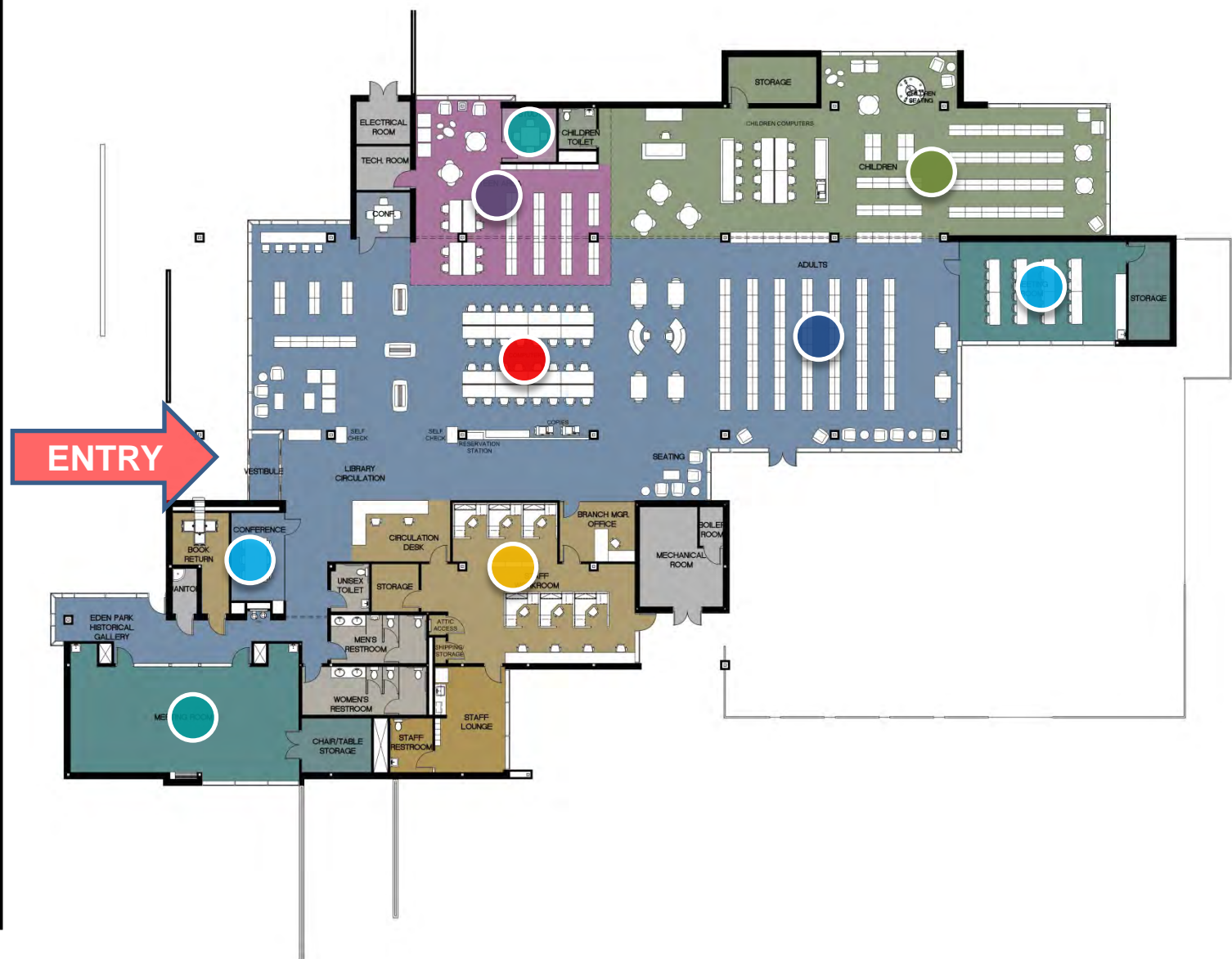
EDEN PARK BRANCH LIBRARY

FLOOR PLAN CONFIGURATIONS

EXISTING PLAN



PROPOSED PLAN



- Children's Collection
- Adult Collection
- Teen Area
- Meeting Space
- Collaborative Space
- Digital Lab
- Public Computers
- Staff

EDEN PARK BRANCH LIBRARY

QUICK STATS

AMMENITIES

- **Meeting Room (*Capacity – 95*)**
- **Collaborative Space**
- **Study Rooms (2)**
- **Conference Room**
- **Dedicated Teen Area**
- **Public Computers (32)**
- **Children's Computers (12)**
(2 Adult Computers in Children's Area)
- **Teen Computers (8)**

SIZE

14,174 SF

COLLECTION CAPACITY

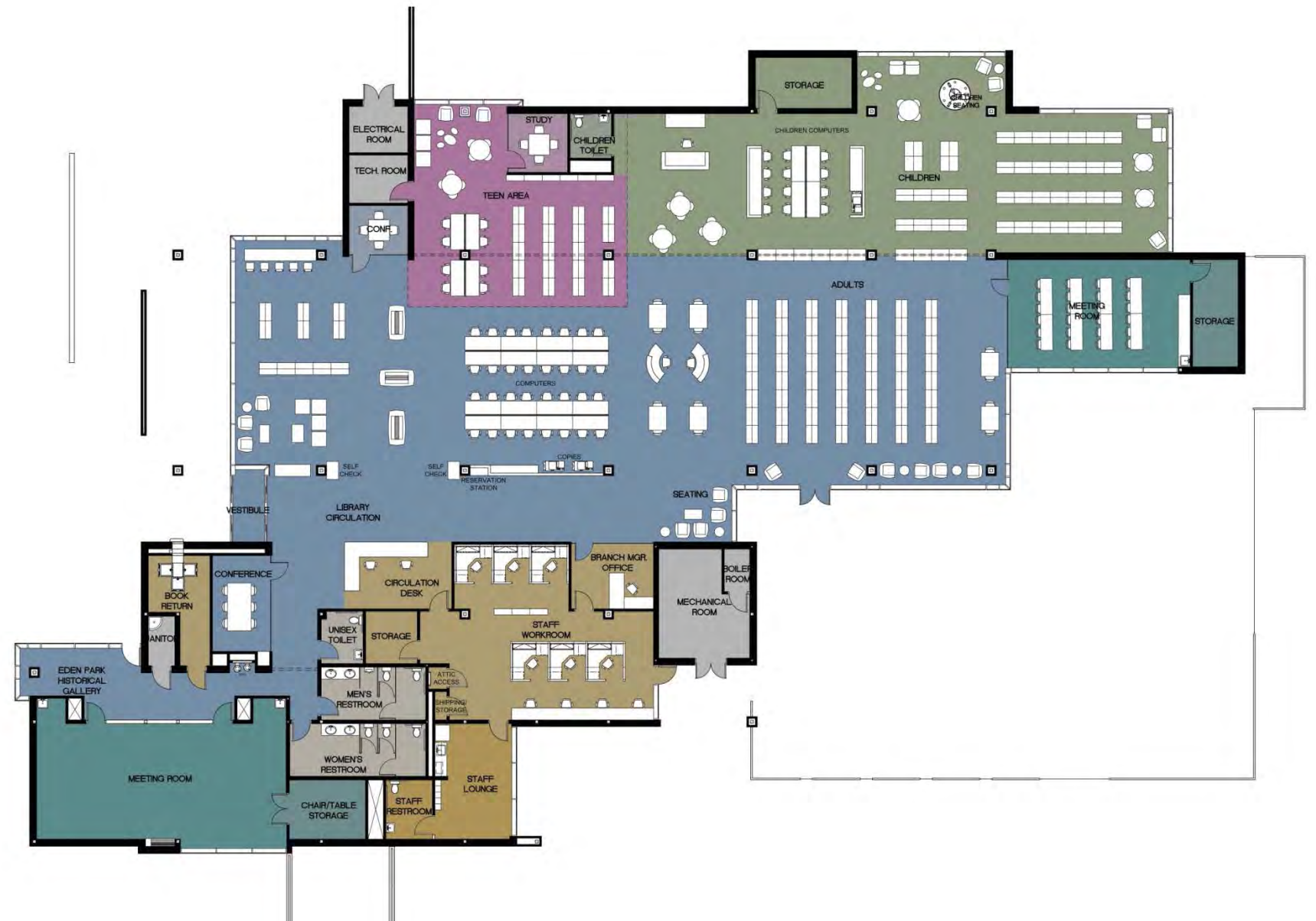
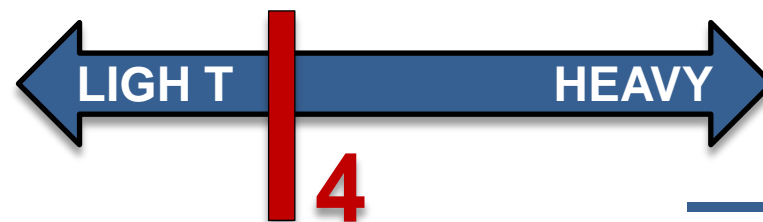
63,303 Collection Capacity

COST RANGE

\$1.5 TO \$2.0 Million*

**based on estimated costs for year 2025*

RENOVATION RATING



PRIDE-CHANEYVILLE BRANCH LIBRARY RECOMMENDATIONS

TO REMAIN

- Existing Meeting Room
- Existing Restrooms
- Architectural Character
- Existing Organization

PROPOSED CHANGES

- Reconfigure Shelving
- Consolidate Staff Area
- Increase Collaborative Space
- Consolidate Public Computers
- Create Dedicated Teen Area
- Increase Meeting Room Space



PRIDE-CHANEYVILLE BRANCH LIBRARY

FLOOR PLAN CONFIGURATIONS

EXISTING PLAN



PROPOSED PLAN



- Children's Collection
- Adult Collection
- Teen Area
- Meeting Space
- Collaborative Space
- Digital Lab
- Public Computers
- Staff

PRIDE-CHANEYVILLE BRANCH LIBRARY

QUICK STATS

AMMENITIES

- Meeting Room (*Capacity – 80*)
- Storytime / Craft Room*
- Collaborative Space
- Study Rooms (1)
- Dedicated Teen Area
- Public Computers (16)
- Children's Computers (8)
- Teen Computers (8)

SIZE

13,439 SF

COLLECTION CAPACITY

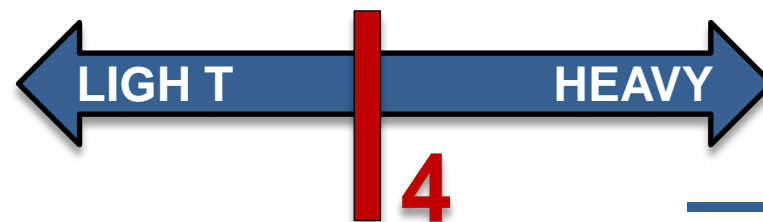
65,956 Collection Capacity

COST RANGE

\$1.9 TO \$2.0 Million*

**based on estimated costs for year 2025*

RENOVATION RATING



CARVER BRANCH LIBRARY RECOMMENDATIONS

TO REMAIN

- Existing Meeting Room
- Existing Restroom
- Architectural Character
- Select Furniture

PROPOSED CHANGES

- Reconfigure Shelving
- Consolidate Staff Area
- Enclose Courtyard
- Increase Program Space
- Create Dedicated Teen Area



CARVER BRANCH LIBRARY

FLOOR PLAN CONFIGURATIONS

EXISTING PLAN



PROPOSED PLAN



- Children's Collection
- Adult Collection
- Teen Area
- Meeting Space
- Collaborative Space
- Digital Lab
- Public Computers
- Staff

CARVER BRANCH LIBRARY

QUICK STATS

AMMENITIES

- Meeting Room (*Capacity – 106*)
- Collaborative Space
- Study Rooms (1)
- Dedicated Teen Area
- Public Computers (28)
- Children's Computers (6)
- Teen Computers (7)
- Digital Lab

SIZE

12,721 SF

COLLECTION CAPACITY

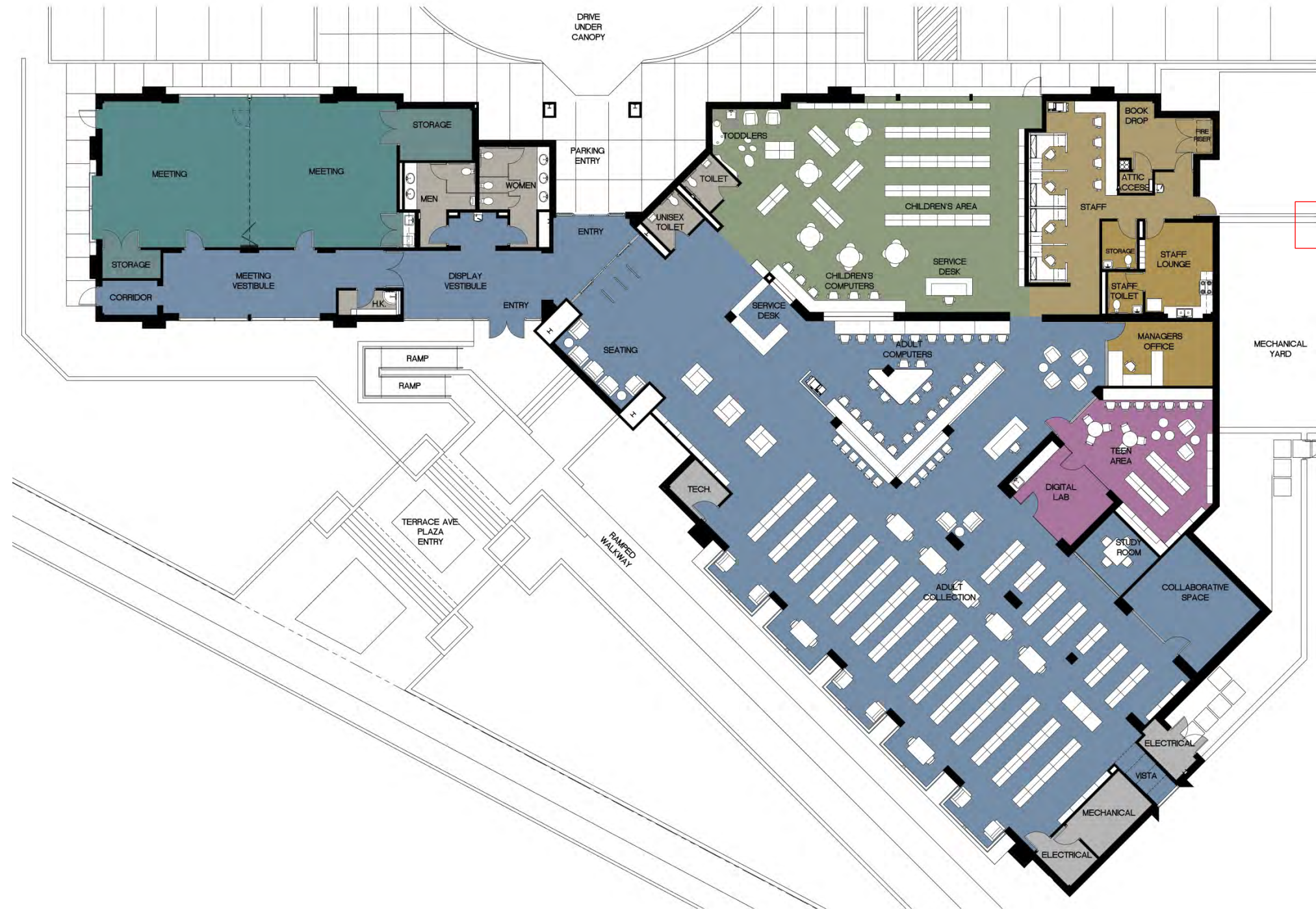
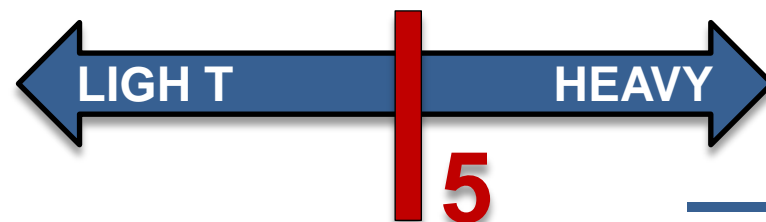
66,265 Collection Capacity

COST RANGE

\$2.7 TO \$3.6 Million*

**based on estimated costs for year 2025*

RENOVATION RATING



CENTRAL BRANCH LIBRARY RECOMMENDATIONS

TO REMAIN

- Existing Meeting Room
- Architectural Character
- Existing Organization

PROPOSED CHANGES

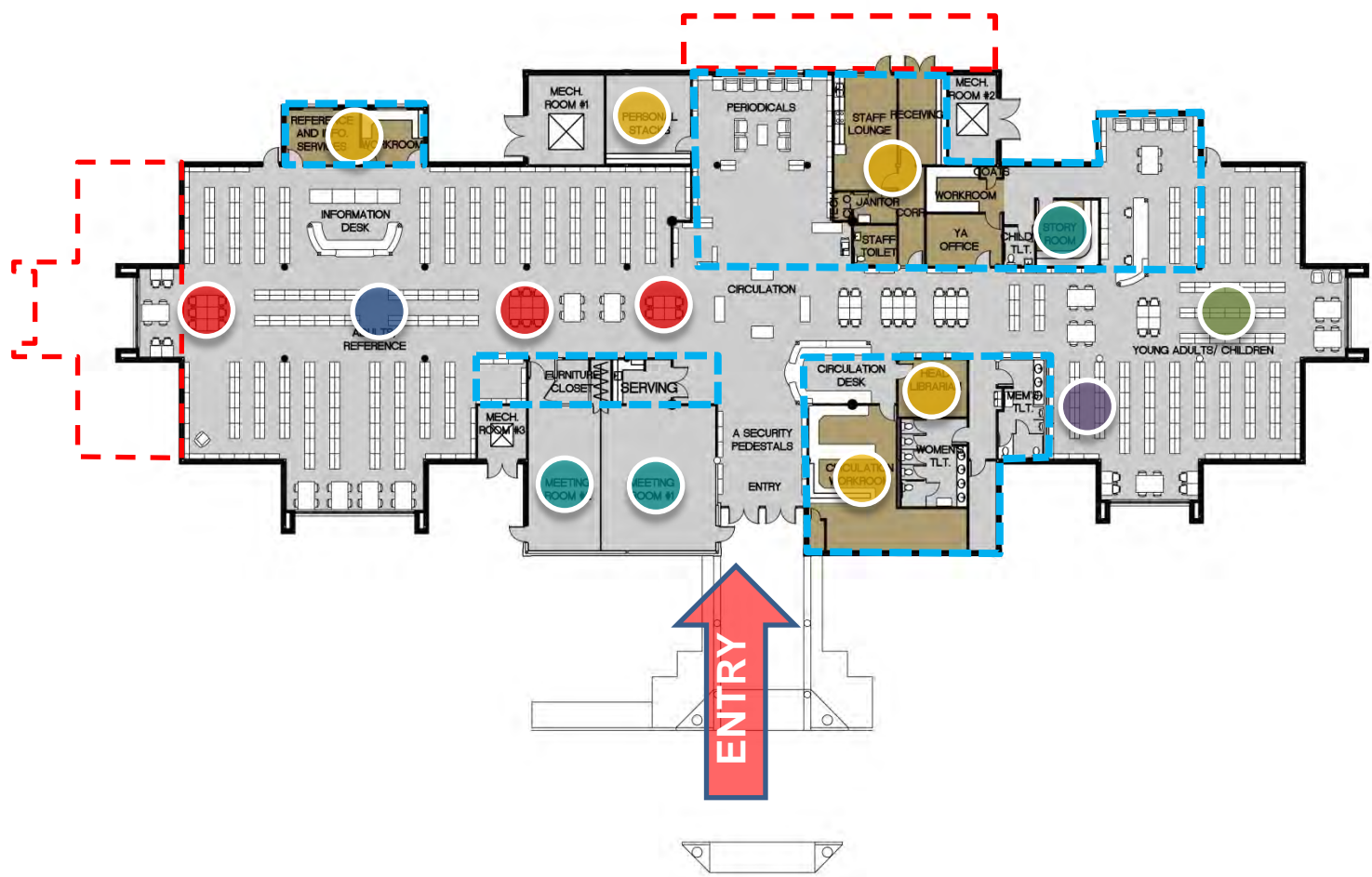
- Reconfigure Shelving
- Consolidate Staff Area
- Expand Adult Collection
- Increase Program Space
- Reconfigure Children's Area
- Create Dedicated Teen Area
- Revise Public Restrooms



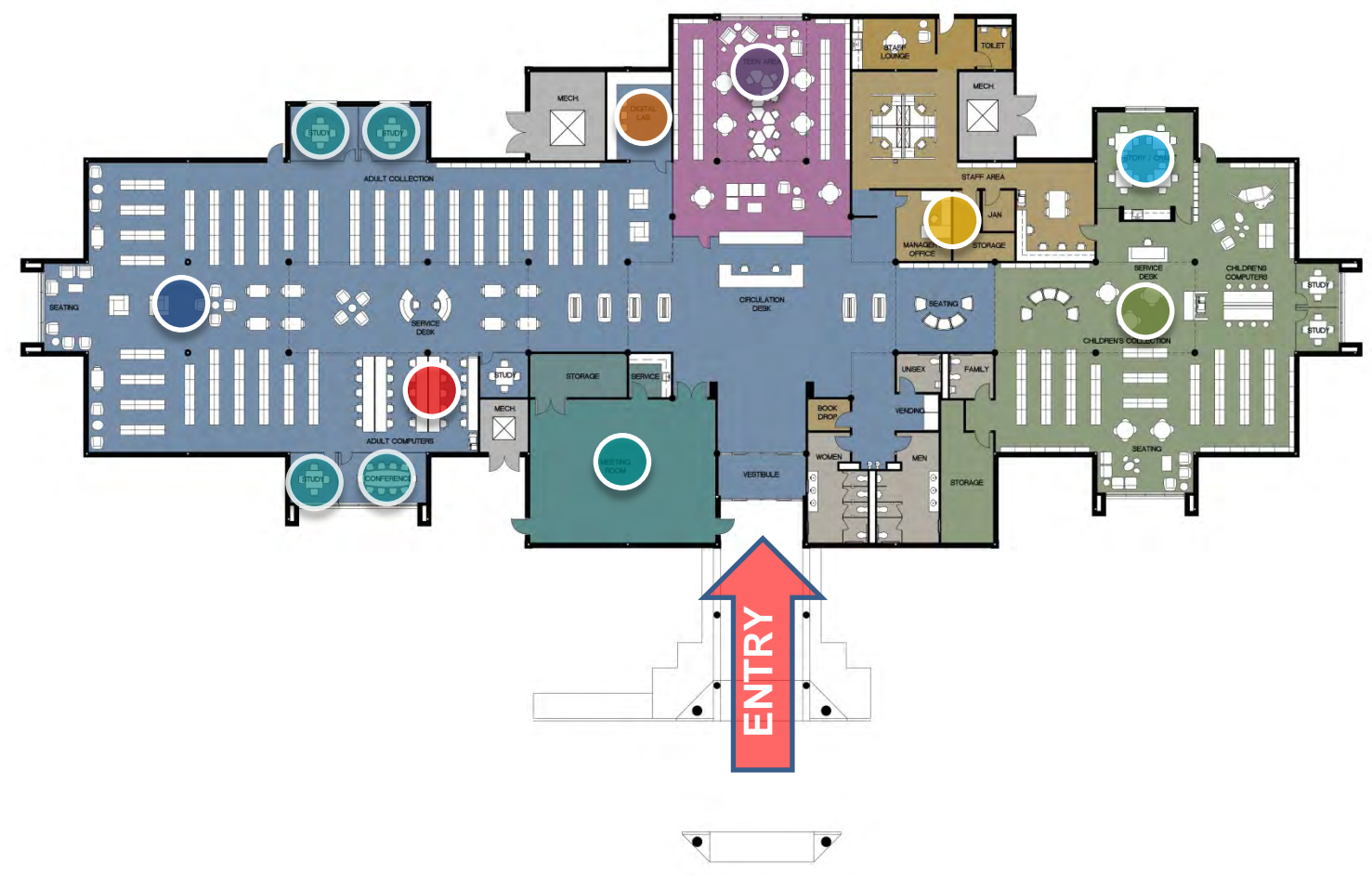
CENTRAL BRANCH LIBRARY

FLOOR PLAN CONFIGURATIONS

EXISTING PLAN



PROPOSED PLAN



- Children's Collection
- Adult Collection
- Teen Area
- Meeting Space
- Collaborative Space
- Digital Lab
- Public Computers
- Staff

CENTRAL BRANCH LIBRARY

QUICK STATS

AMMENITIES

- Meeting Room (Capacity – 100)
- Storytime / Craft Room
- Collaborative Space
- Study Rooms (6)
- Dedicated Teen Area
- Public Computers (25)
- Children's Computers (8)
- Teen Computers (10)
- Digital Lab



SIZE

18,912 SF

COLLECTION CAPACITY

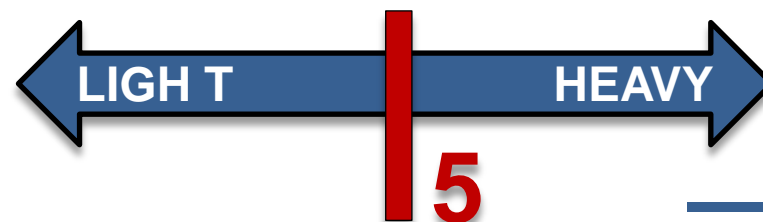
111,224 Collection Capacity

COST RANGE

\$2.6 TO \$4.4 Million*

**based on estimated costs for year 2025*

RENOVATION RATING



SCOTLANDVILLE BRANCH LIBRARY RECOMMENDATIONS

TO REMAIN

- Exposed Architectural Structure
- Architectural Character
- Existing Organization

PROPOSED CHANGES

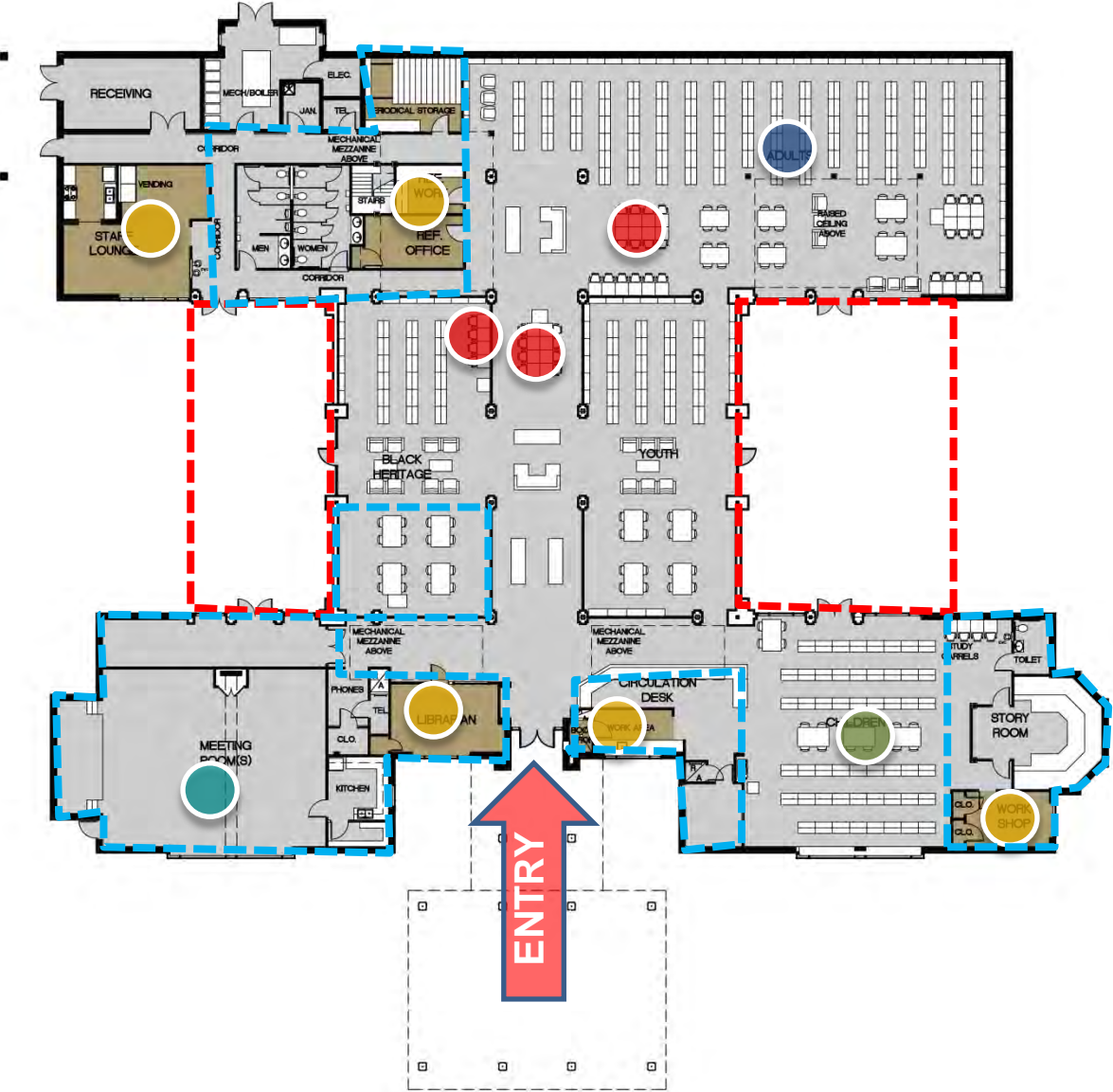
- Relocate Restrooms
- Reconfigure Shelving
- Consolidate Staff Area
- Increase Collaborative Space
- Revise Meeting Room
- Revise Entry Sequence
- Expand Children's Area
- Create Dedicated Teen Area



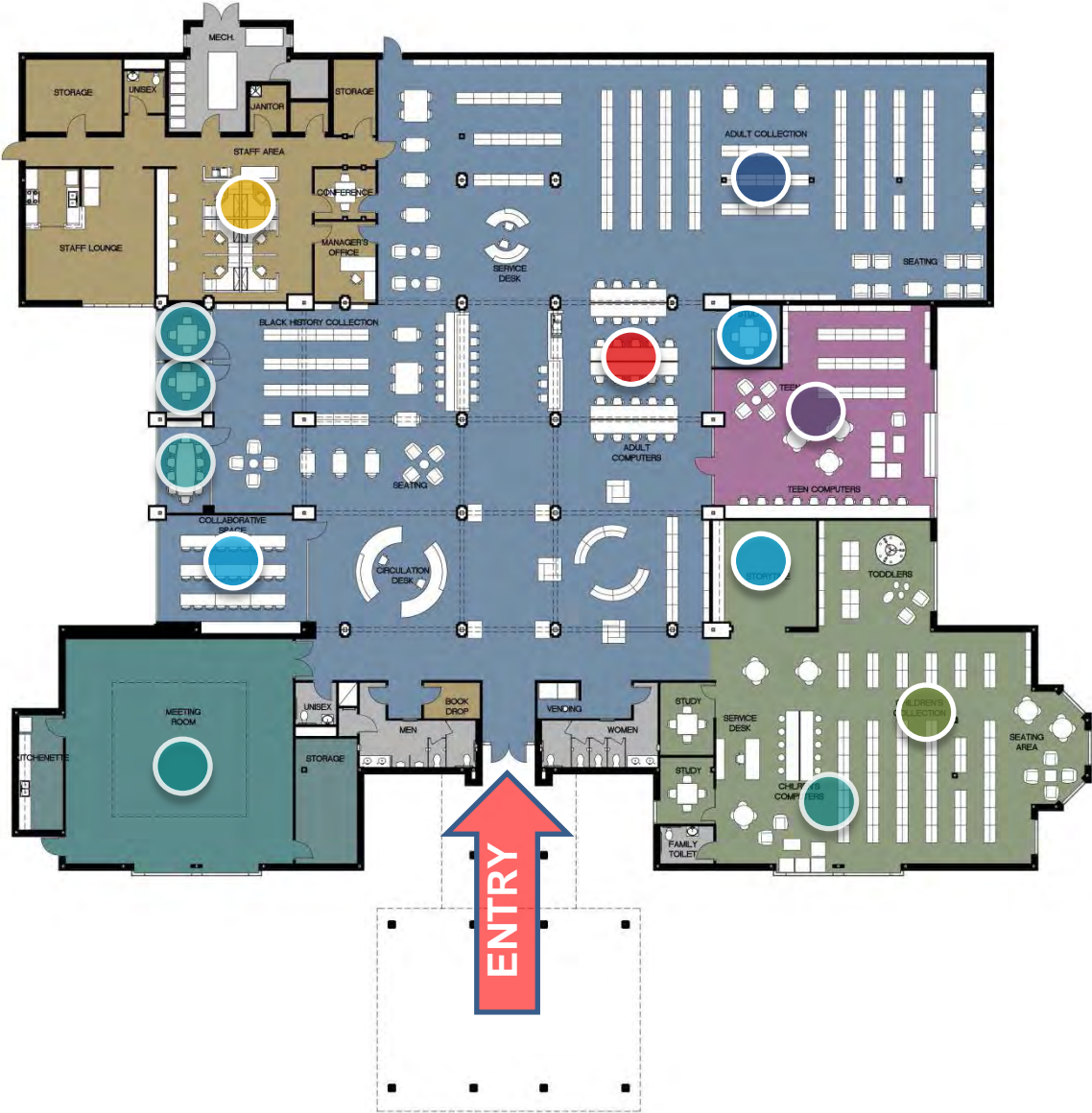
SCOTLANDVILLE BRANCH LIBRARY

FLOOR PLAN CONFIGURATIONS

EXISTING PLAN



PROPOSED PLAN



- Children's Collection
- Adult Collection
- Teen Area
- Meeting Space
- Collaborative Space
- Digital Lab
- Public Computers
- Staff

SCOTLANDVILLE BRANCH LIBRARY

QUICK STATS

AMMENITIES

- Meeting Room (Capacity – 150)
- Storytime / Craft Room
- Collaborative Space
- Study Rooms (5)
- Conference Room
- Dedicated Teen Area
- Public Computers (32)
- Children's Computers (10)
- Teen Computers (10)

SIZE

21,399 SF

COLLECTION CAPACITY

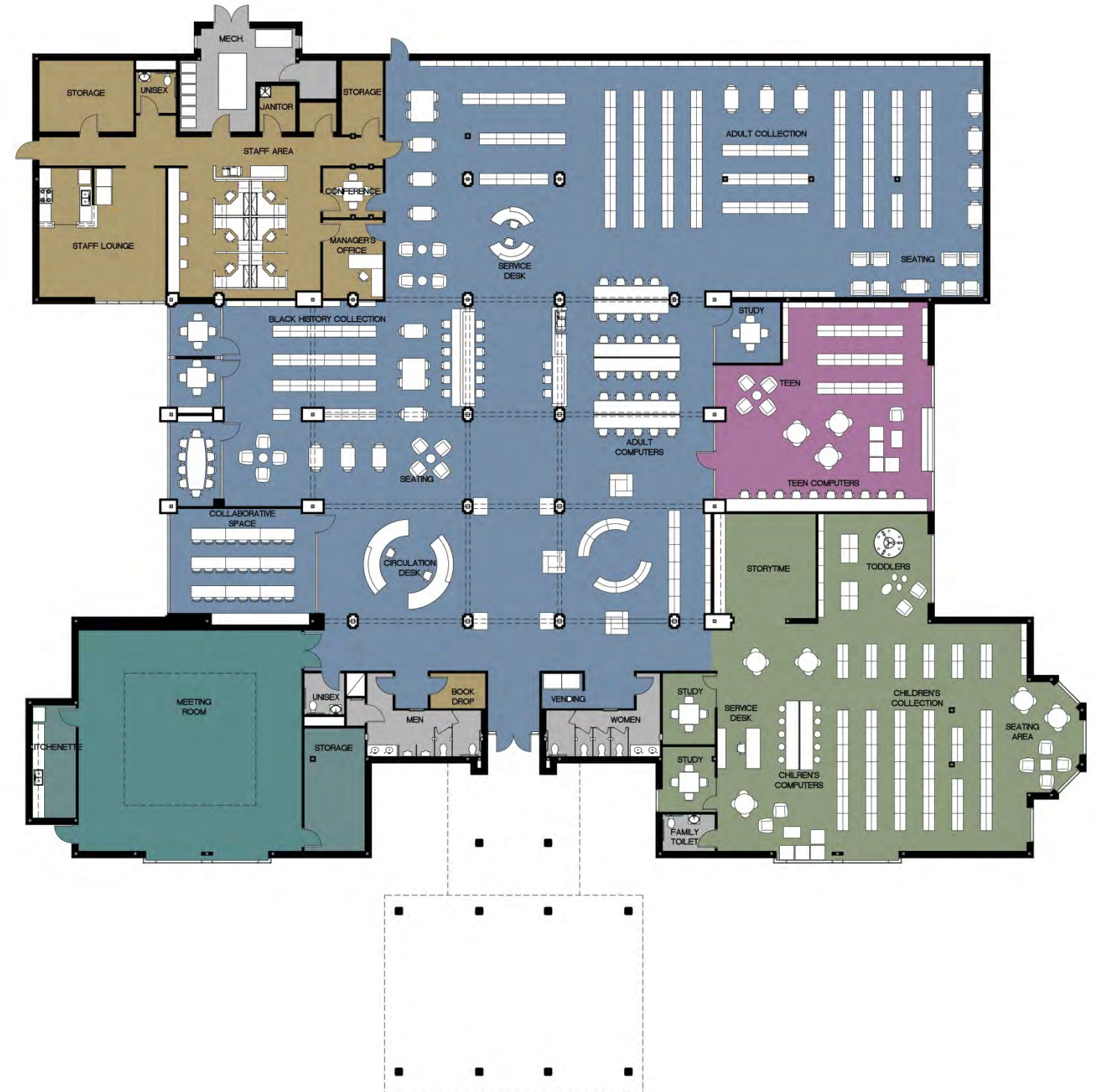
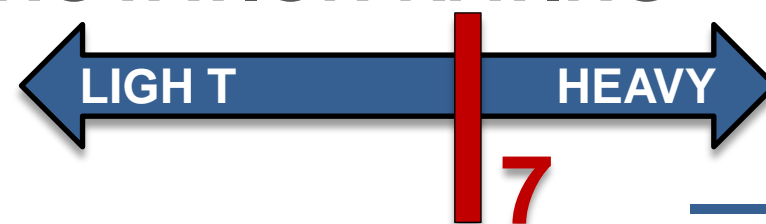
89,557 Collection Capacity

COST RANGE

\$4.0 TO \$4.5 Million*

**based on estimated costs for year 2025*

RENOVATION RATING



DELMONT GARDENS BRANCH LIBRARY RECOMMENDATIONS

TO REMAIN

- New Adult Collection Addition

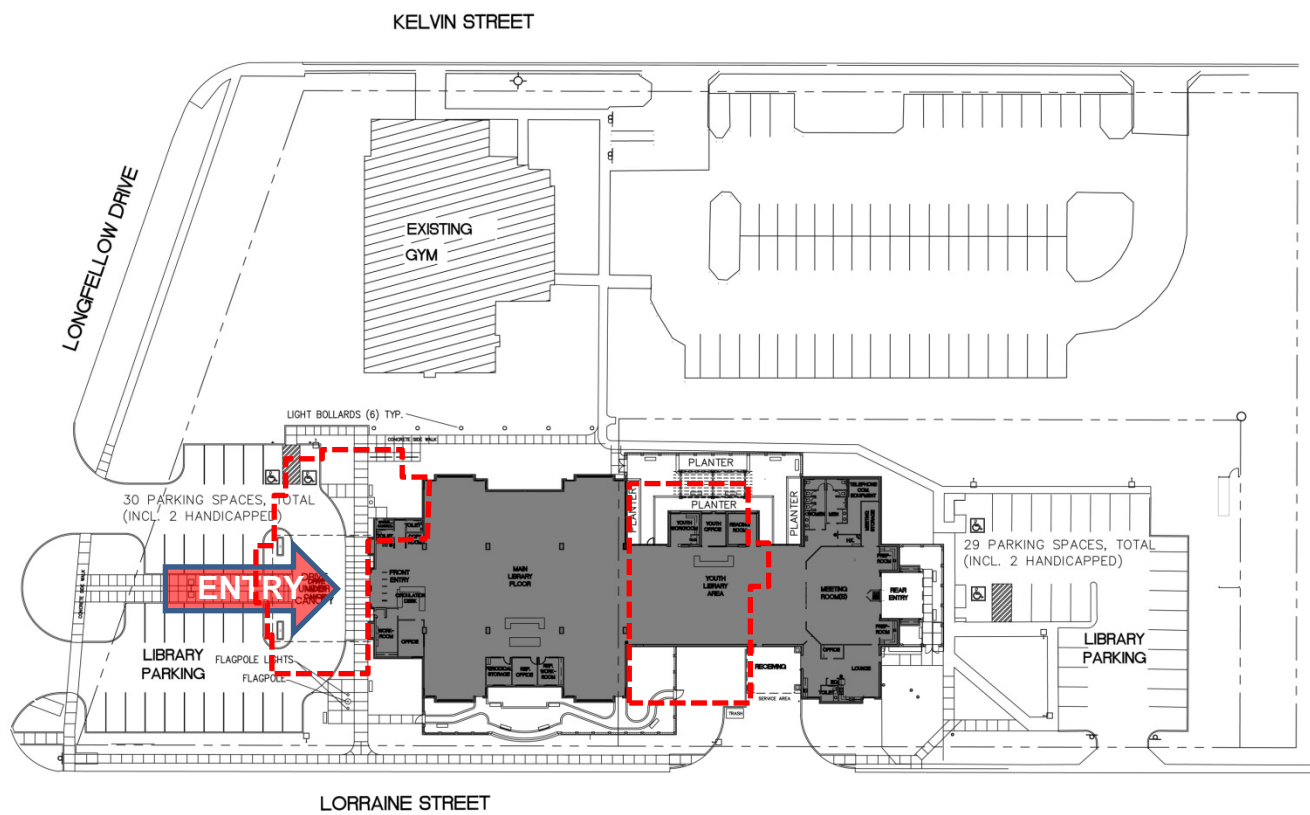
PROPOSED CHANGES

- Demolish East Portion of Facility
- Construct Addition at Existing West Parking Lot
- Construct small Addition to East (New Entry)
- Revise East Parking Lot



DELMONT GARDENS BRANCH LIBRARY SITE PLAN CONFIGURATIONS

EXISTING SITE



PROPOSED SITE



DELMONT GARDENS BRANCH LIBRARY

QUICK STATS

AMMENITIES

- Meeting Room (*Capacity – 100*)
- Storytime / Craft Room
- Collaborative Space (2)
- Study Rooms (5)
- Dedicated Teen Area
- Public Computers (40)
- Children's Computers (12)
(*2 Adult Computers in Children's Area*)
- Teen Computers (12)

SIZE

18,995 SF

COLLECTION CAPACITY

111,465 Collection Capacity

COST RANGE

\$8.0 TO \$8.3 Million*

**based on estimated costs for year 2025*

RENOVATION RATING



ZACHARY BRANCH LIBRARY RECOMMENDATIONS

TO REMAIN

- Exposed Architectural Structure
- Architectural Character

PROPOSED CHANGES

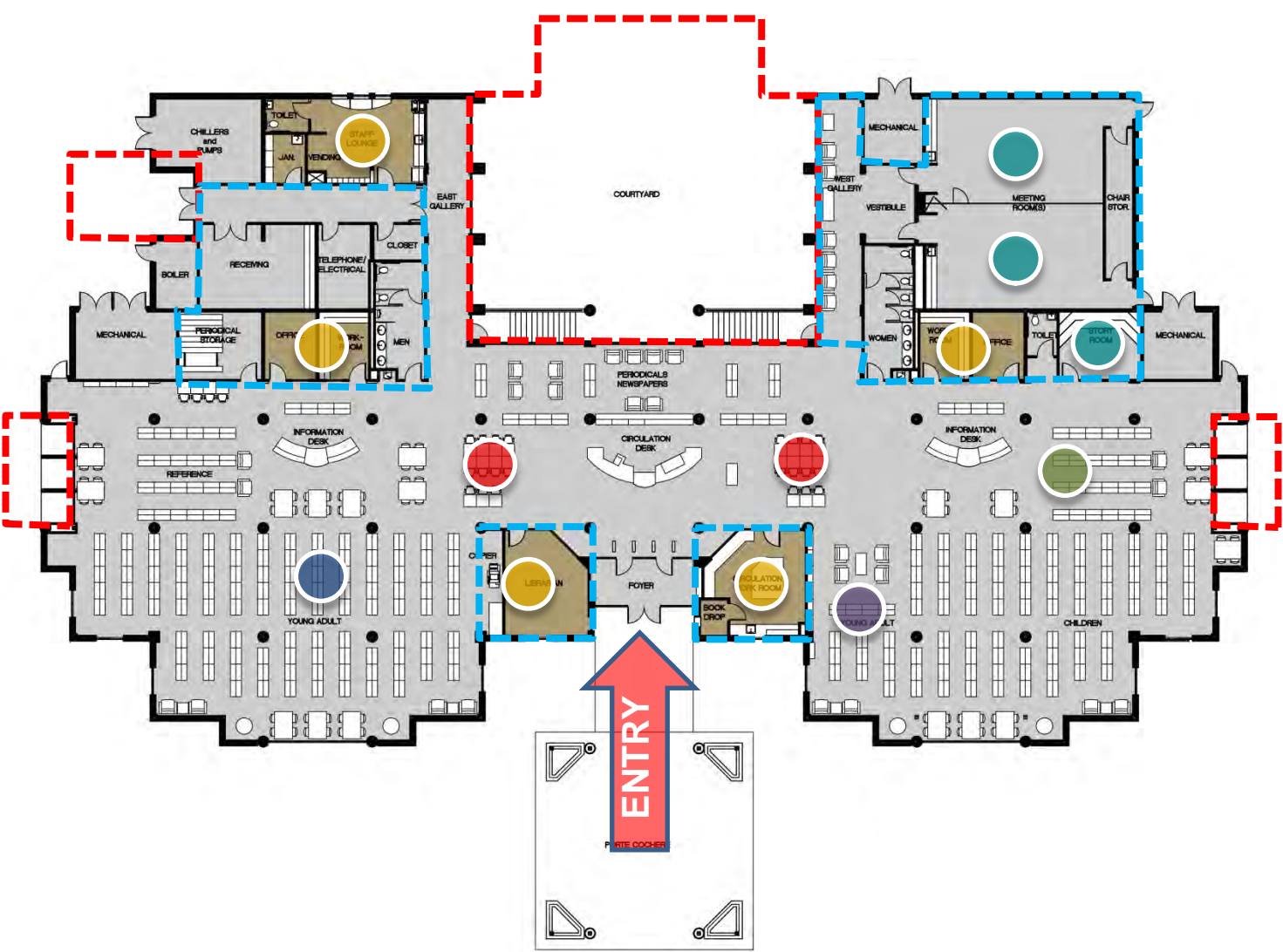
- Relocate Restrooms
- Reconfigure Shelving
- Consolidate Staff Area
- Revised Configuration
- Enclose Courtyard
- Create Dedicated Teen Area
- Increase Meeting Space



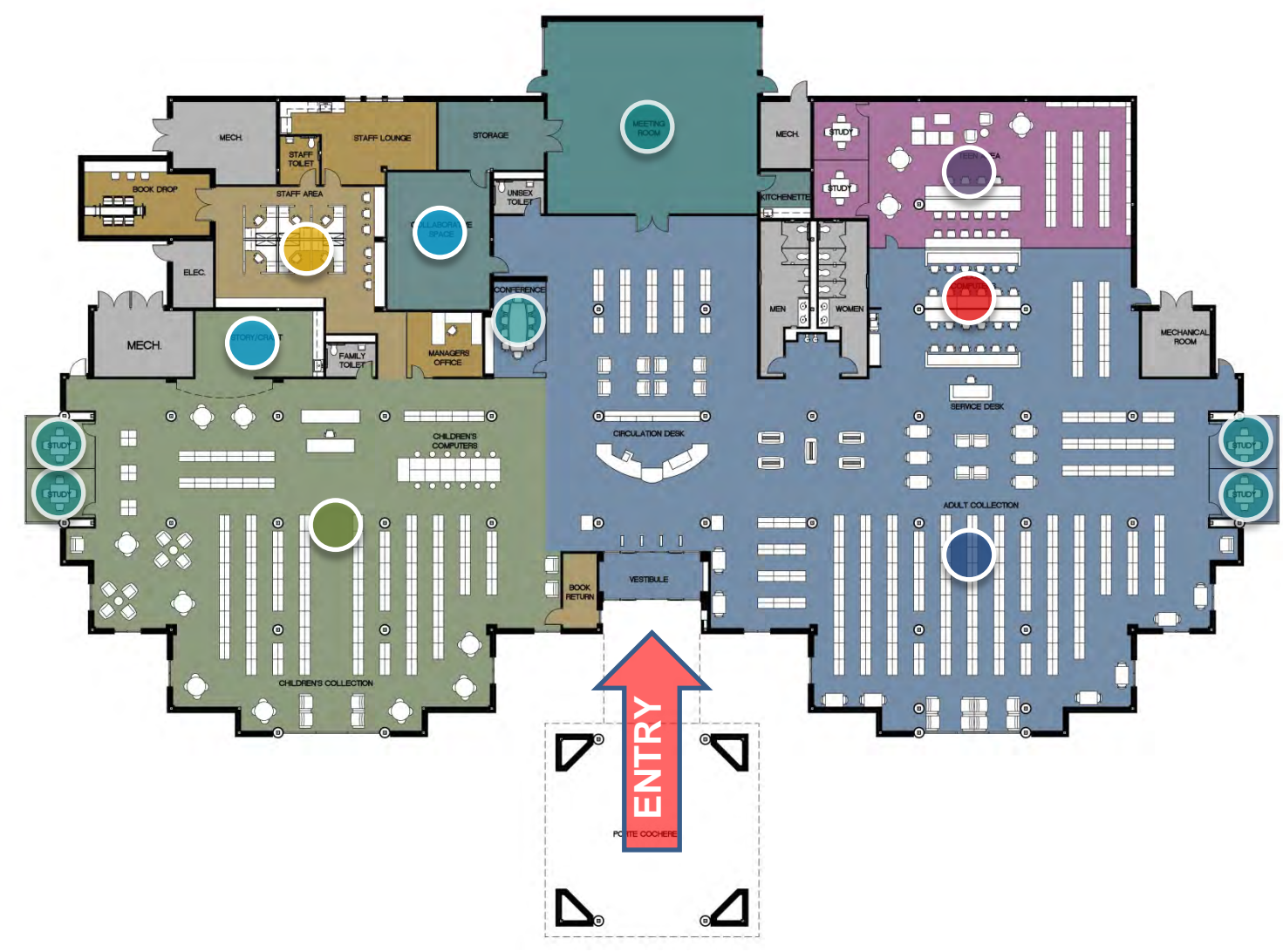
ZACHARY BRANCH LIBRARY

FLOOR PLAN CONFIGURATIONS

EXISTING PLAN



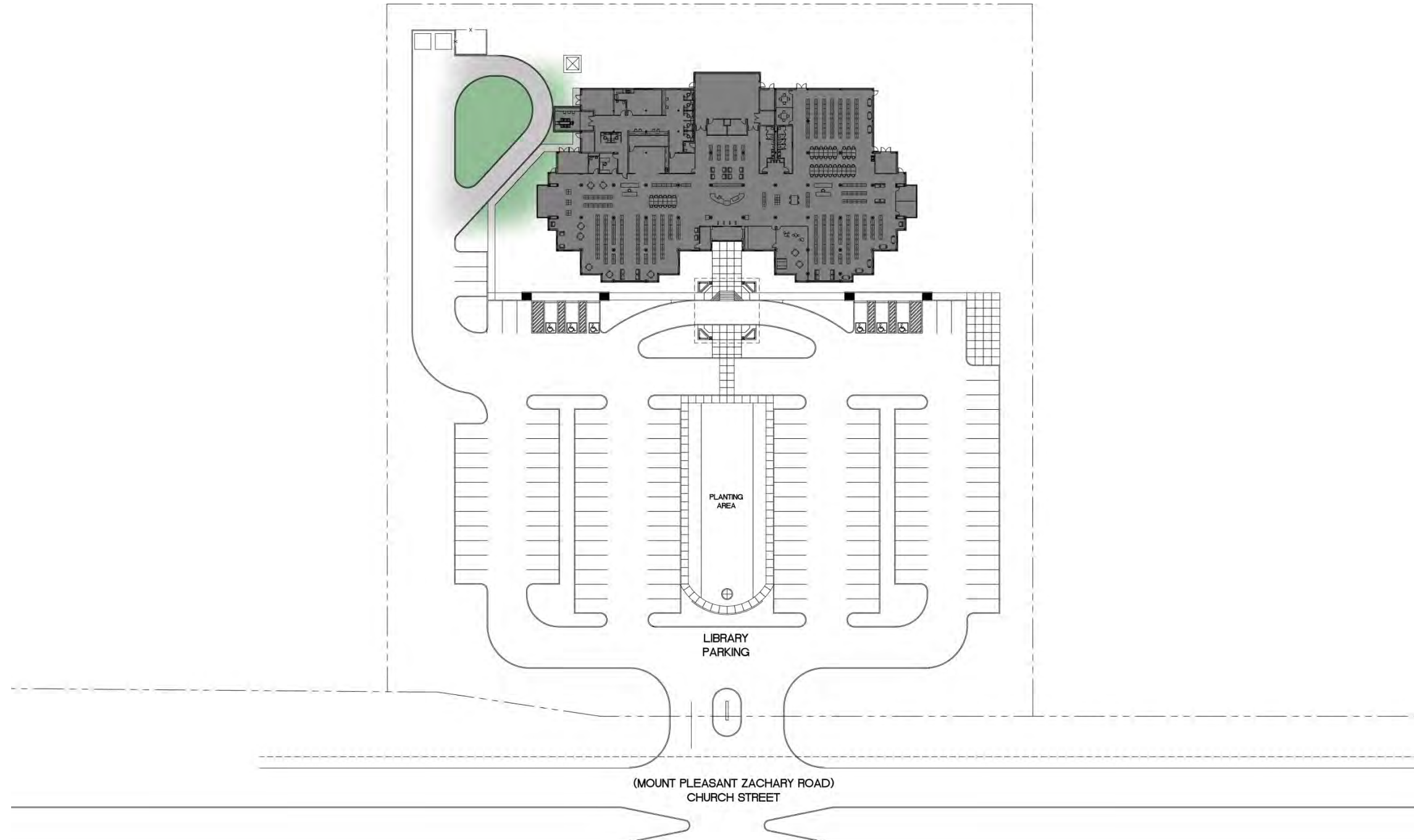
PROPOSED PLAN



- Children's Collection
- Adult Collection
- Teen Area
- Meeting Space
- Collaborative Space
- Digital Lab
- Public Computers
- Staff

ZACHARY BRANCH LIBRARY SITE PLAN CONFIGURATION

PROPOSED SITE



ZACHARY BRANCH LIBRARY

QUICK STATS

AMMENITIES

- Meeting Room (*Capacity – 110*)
- Storytime / Craft Room
- Collaborative Space (1)
- Study Rooms (6)
- Conference Room (1)
- Dedicated Teen Area
- Public Computers (38)
- Children's Computers (12)
(*2 Adult Computers in Children's Area*)
- Teen Computers (12)

SIZE

23,456 SF

COLLECTION CAPACITY

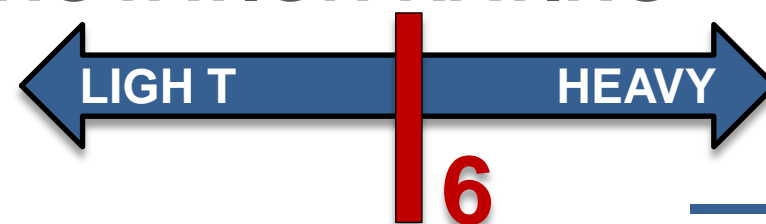
134,217 Collection Capacity

COST RANGE

\$4.7 TO \$4.8 Million*

**based on estimated costs for year 2025*

RENOVATION RATING



ZACHARY REGIONAL LIBRARY OPTION RECOMMENDATIONS

EXPAND EXISTING LIBRARY TO ACCOMMODATE REGIONAL LIBRARY AMMENITIES

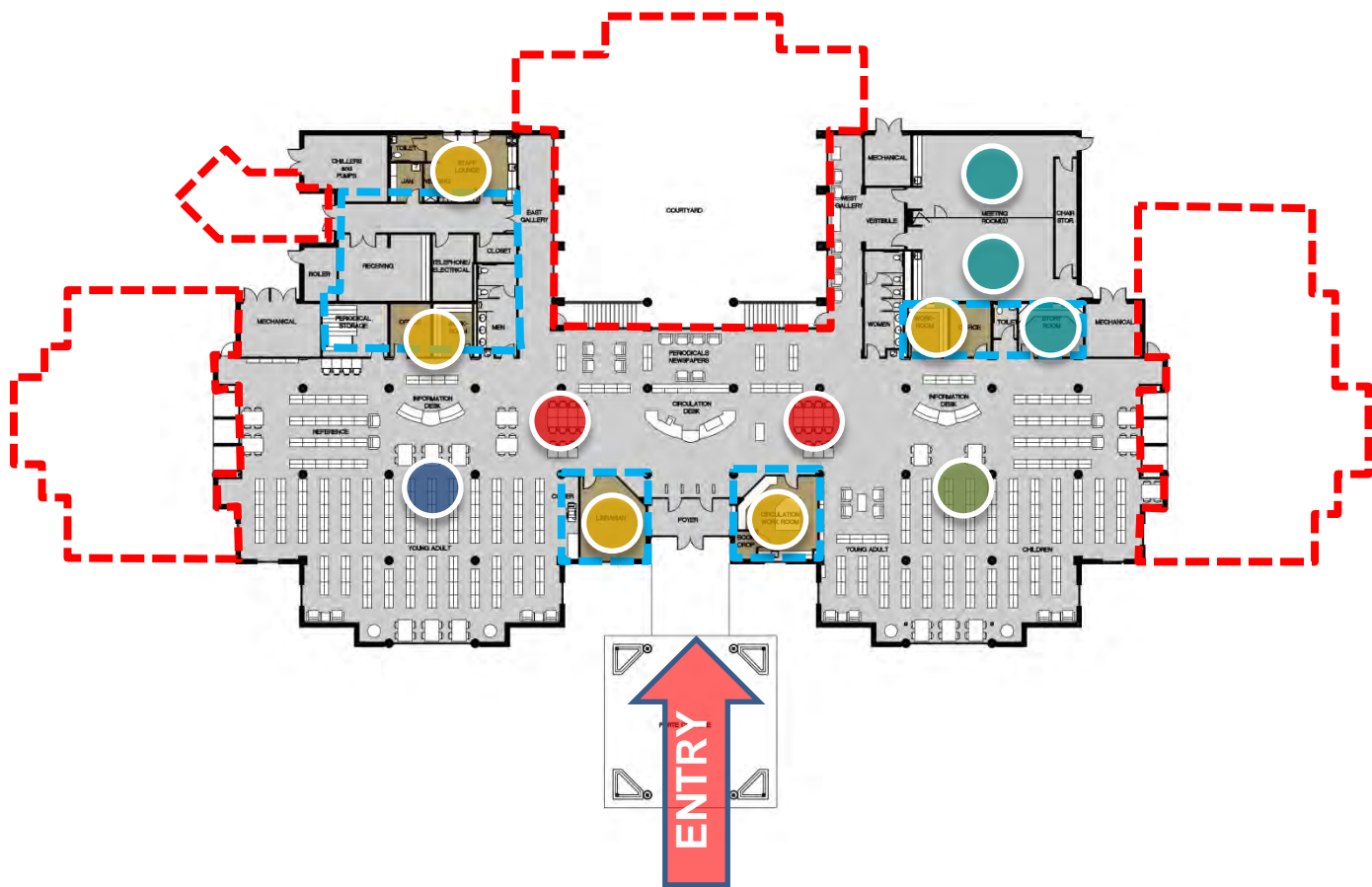
- Enclose Courtyard
- Expand Collection Areas
- Increase Meeting Room Spaces
- Increase Collaborative Space
- Revise Configuration
- Create Dedicated Teen Area



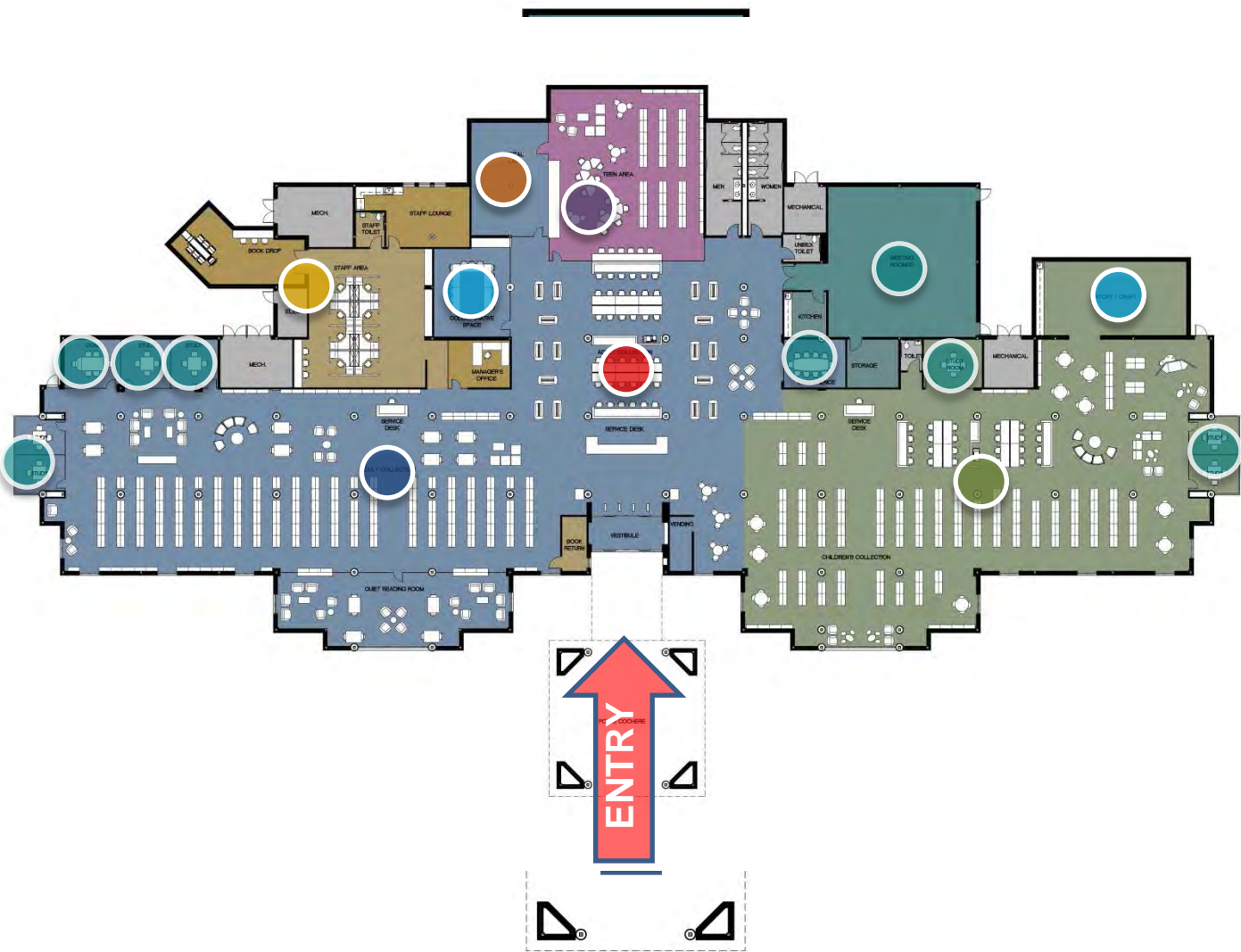
ZACHARY REGIONAL LIBRARY OPTION

FLOOR PLAN CONFIGURATIONS

EXISTING PLAN



PROPOSED PLAN



- Children's Collection
- Adult Collection
- Teen Area
- Meeting Space
- Collaborative Space
- Digital Lab
- Public Computers
- Staff

ZACHARY REGIONAL LIBRARY OPTION

QUICK STATS

AMMENITIES

- Meeting Room (Capacity – 150)
- Storytime / Craft Room
- Collaborative Space (1)
- Study Rooms (7)
- Conference Room (2)
- Dedicated Teen Area
- Public Computers (36)
- Children's Computers (24)
(4 Adult Computers in Children's Area)
- Teen Computers (10)
- Digital Lab

SIZE

30,702 SF

COLLECTION CAPACITY

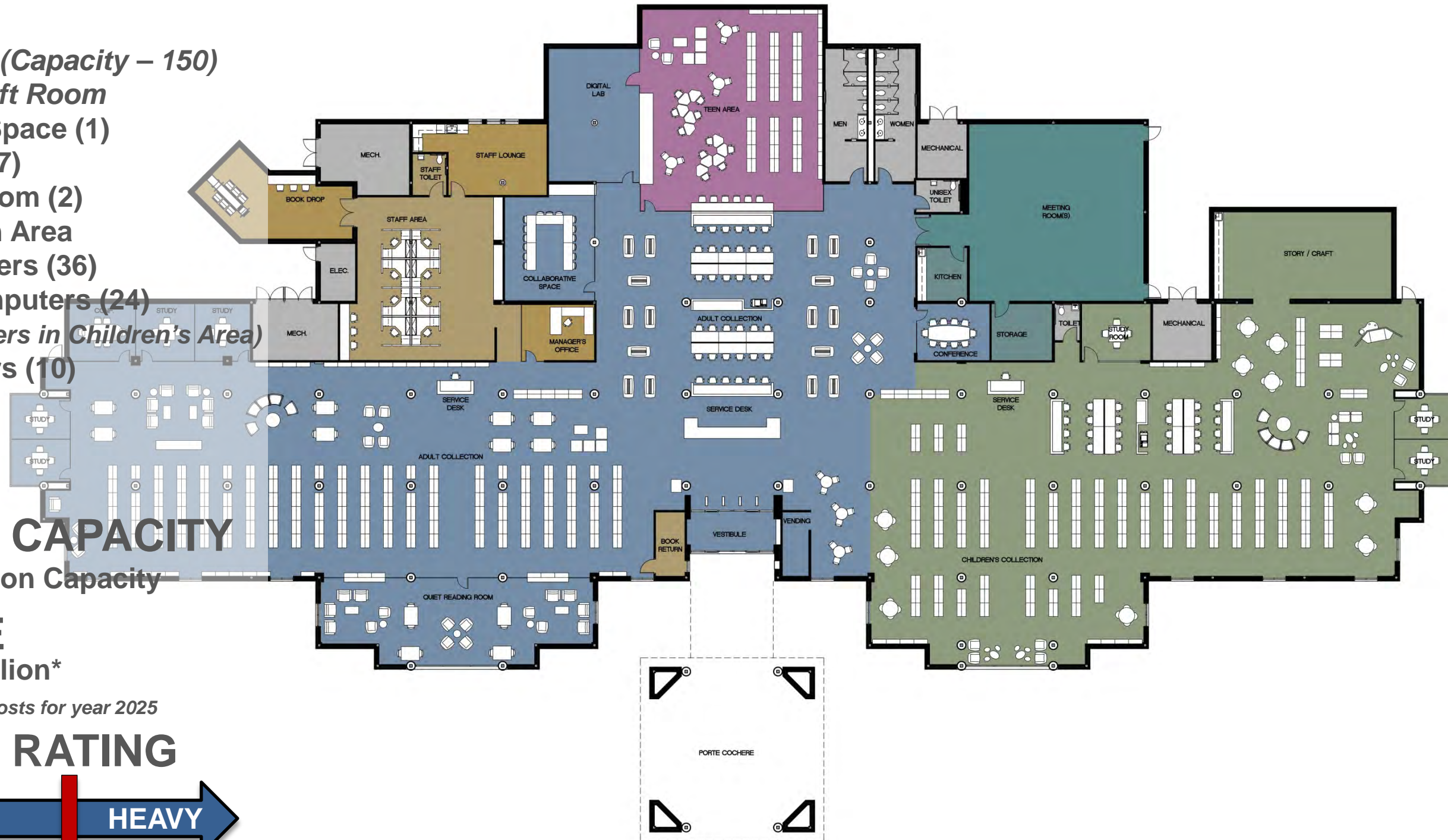
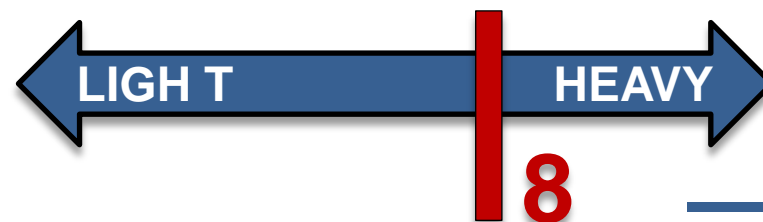
157,462 Collection Capacity

COST RANGE

\$5.2 TO \$8.3 Million*

**based on estimated costs for year 2025*

RENOVATION RATING



BAKER BRANCH LIBRARY RECOMMENDATIONS

TO REMAIN

- Exposed Architectural Structure
- Architectural Character

PROPOSED CHANGES

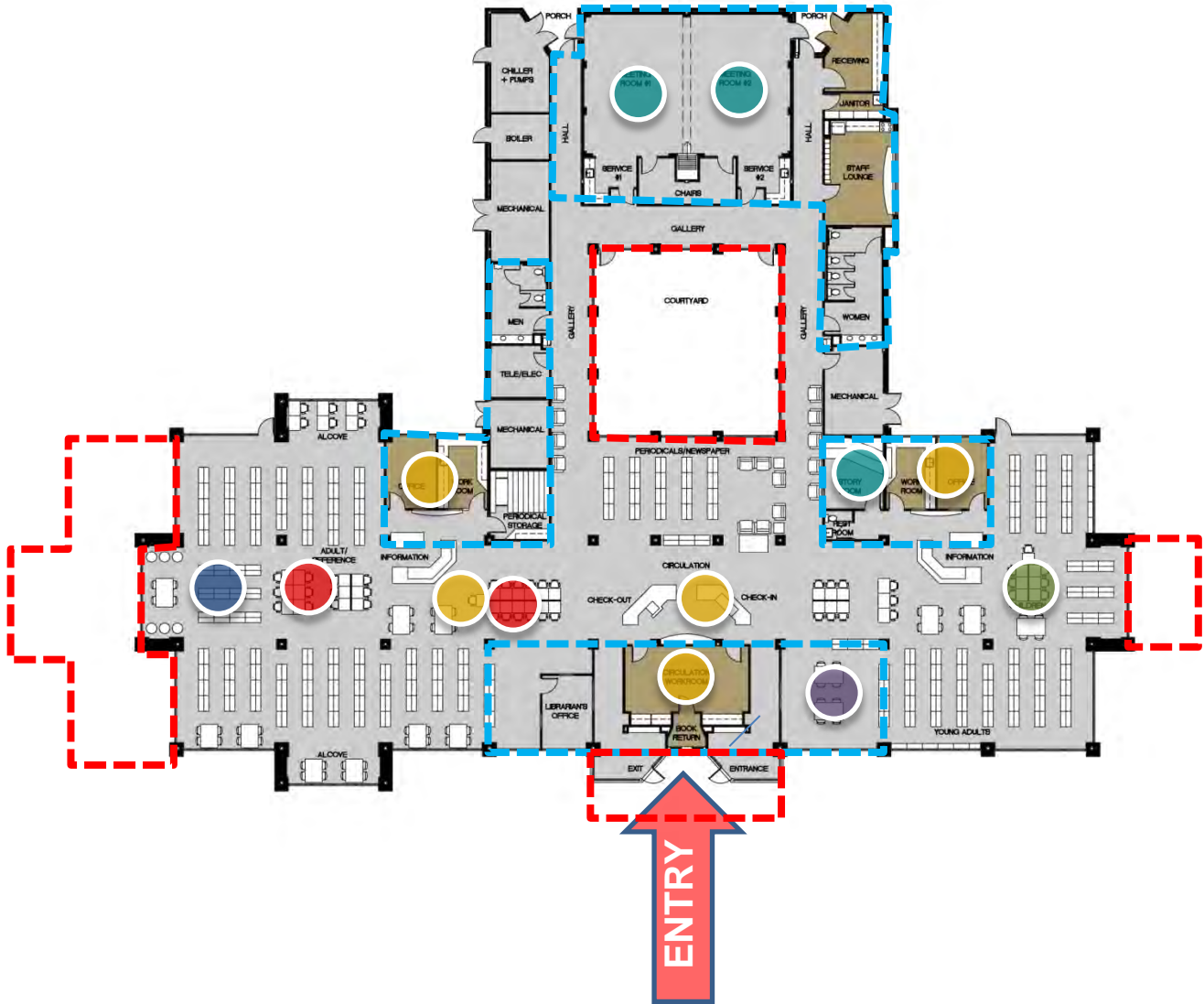
- Relocate Restrooms
- Reconfigure Entry to Drive-up Book Drop
- Consolidate Staff Area
- Revise Meeting Room
- Enclose Courtyard
- Create Dedicated Teen Area
- Reconfigure Shelving



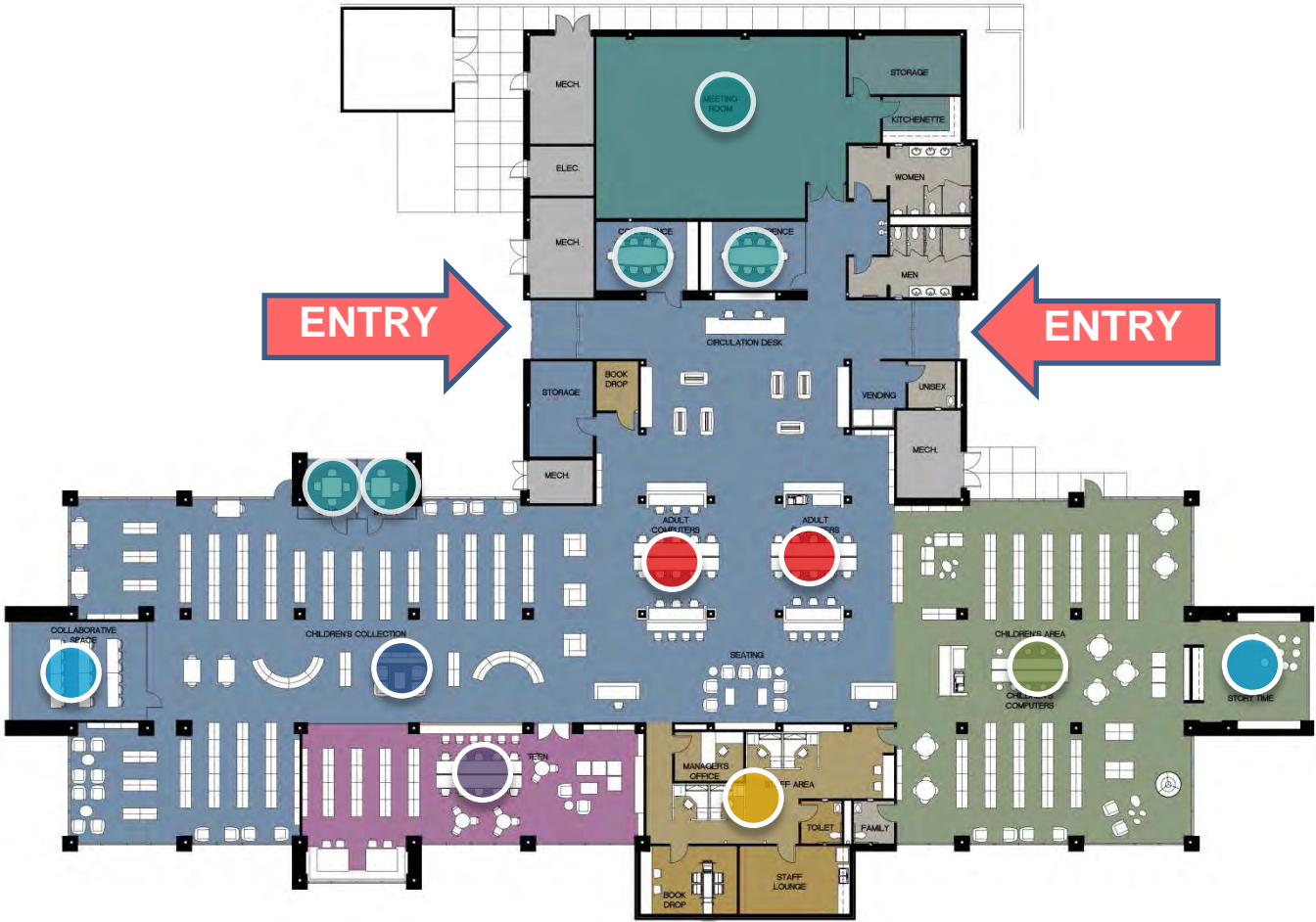
BAKER BRANCH LIBRARY

FLOOR PLAN CONFIGURATIONS

EXISTING PLAN



PROPOSED PLAN



- Children's Collection
- Adult Collection
- Teen Area
- Meeting Space
- Collaborative Space
- Digital Lab
- Public Computers
- Staff

BAKER BRANCH LIBRARY SITE PLAN CONFIGURATION

PROPOSED SITE



BAKER BRANCH LIBRARY

QUICK STATS

AMMENITIES

- Meeting Room (*Capacity – 100*)
- *Storytime / Craft Room*
- Collaborative Space (1)
- Study Rooms (2)
- Conference Room (2)
- Dedicated Teen Area
- Public Computers (26)
- Children's Computers (10)
(*2 Adult Computers in Children's Area*)
- Teen Computers (10)

SIZE

19,993 SF

COLLECTION CAPACITY

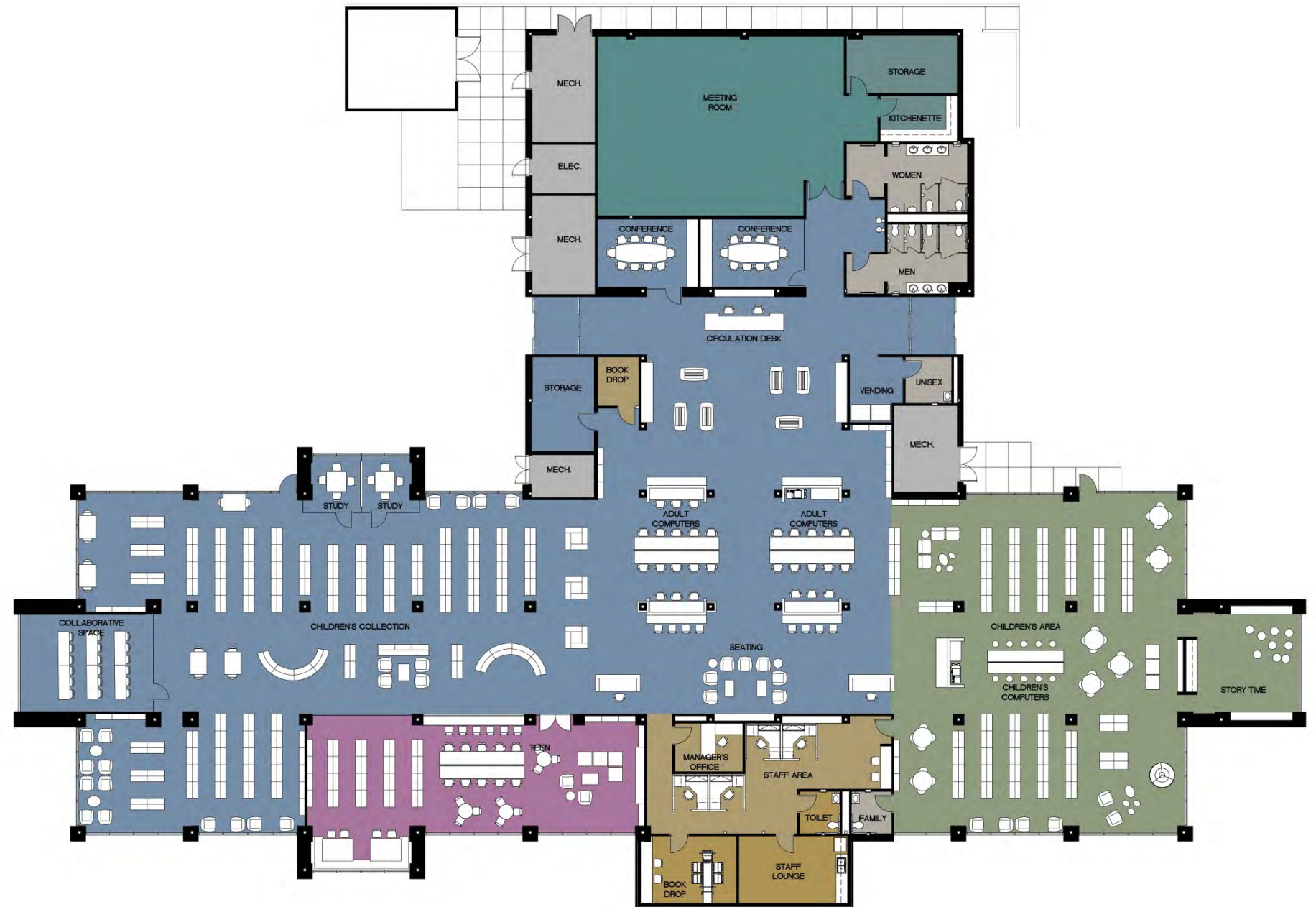
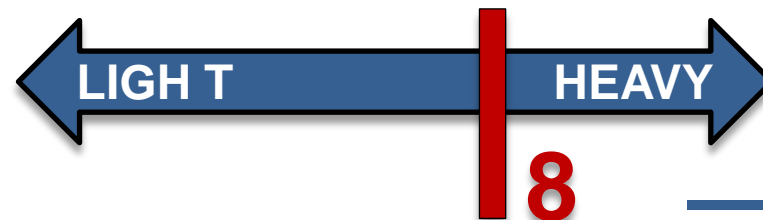
90,196 Collection Capacity

COST RANGE

\$5.1 TO \$5.7 Million*

**based on estimated costs for year 2025*

RENOVATION RATING



BAKER REGIONAL LIBRARY OPTION RECOMMENDATIONS

EXPAND EXISTING LIBRARY TO ACCOMMODATE REGIONAL LIBRARY AMMENITIES

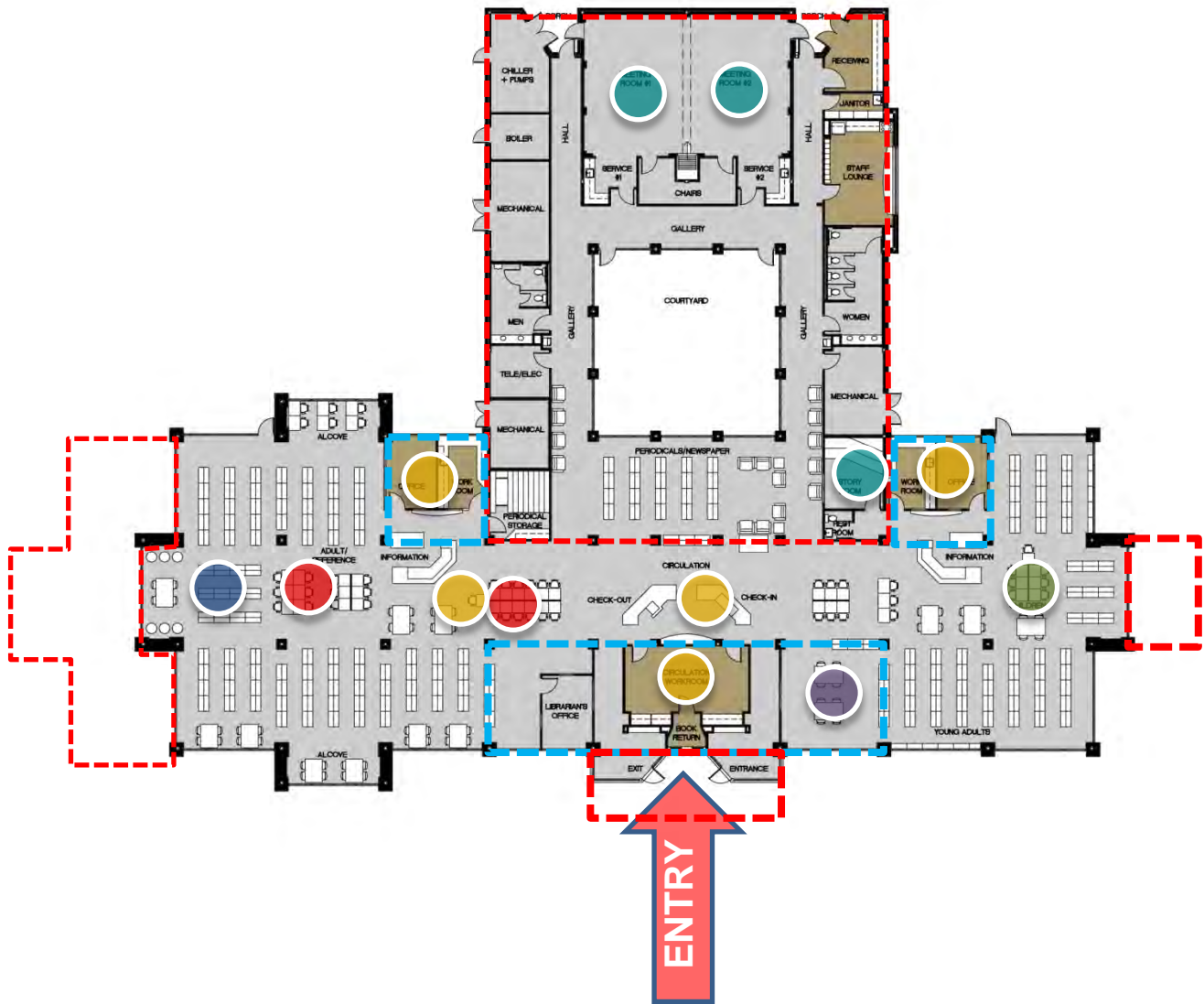
- Demolish West Portion of Facility
- Construct Two Story Addition
- Utilize Existing Parking
- Create Entry Lobby with Access to both Parking Lots



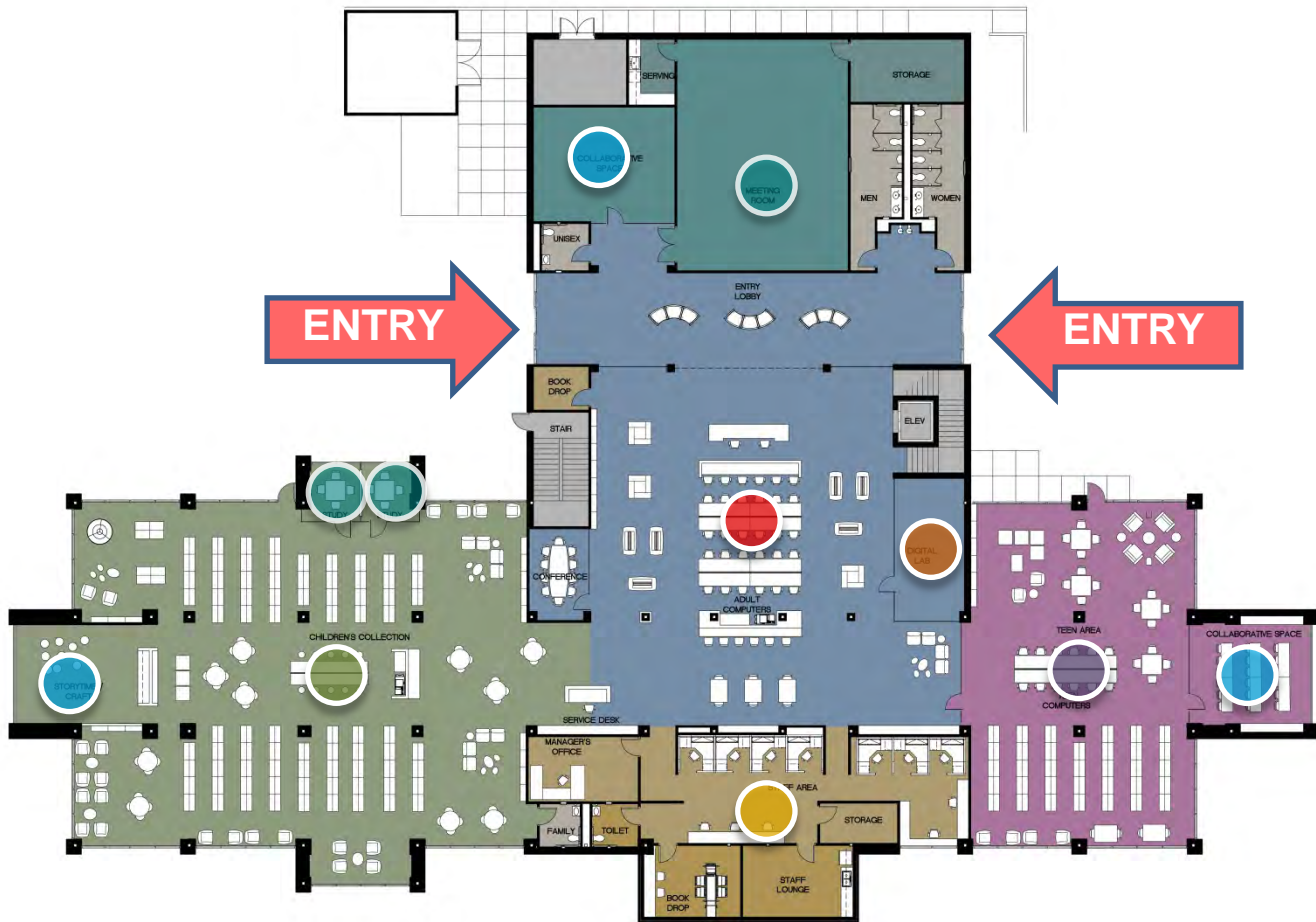
BAKER REGIONAL LIBRARY OPTION

FLOOR PLAN CONFIGURATIONS

EXISTING PLAN



PROPOSED FIRST FLOOR PLAN

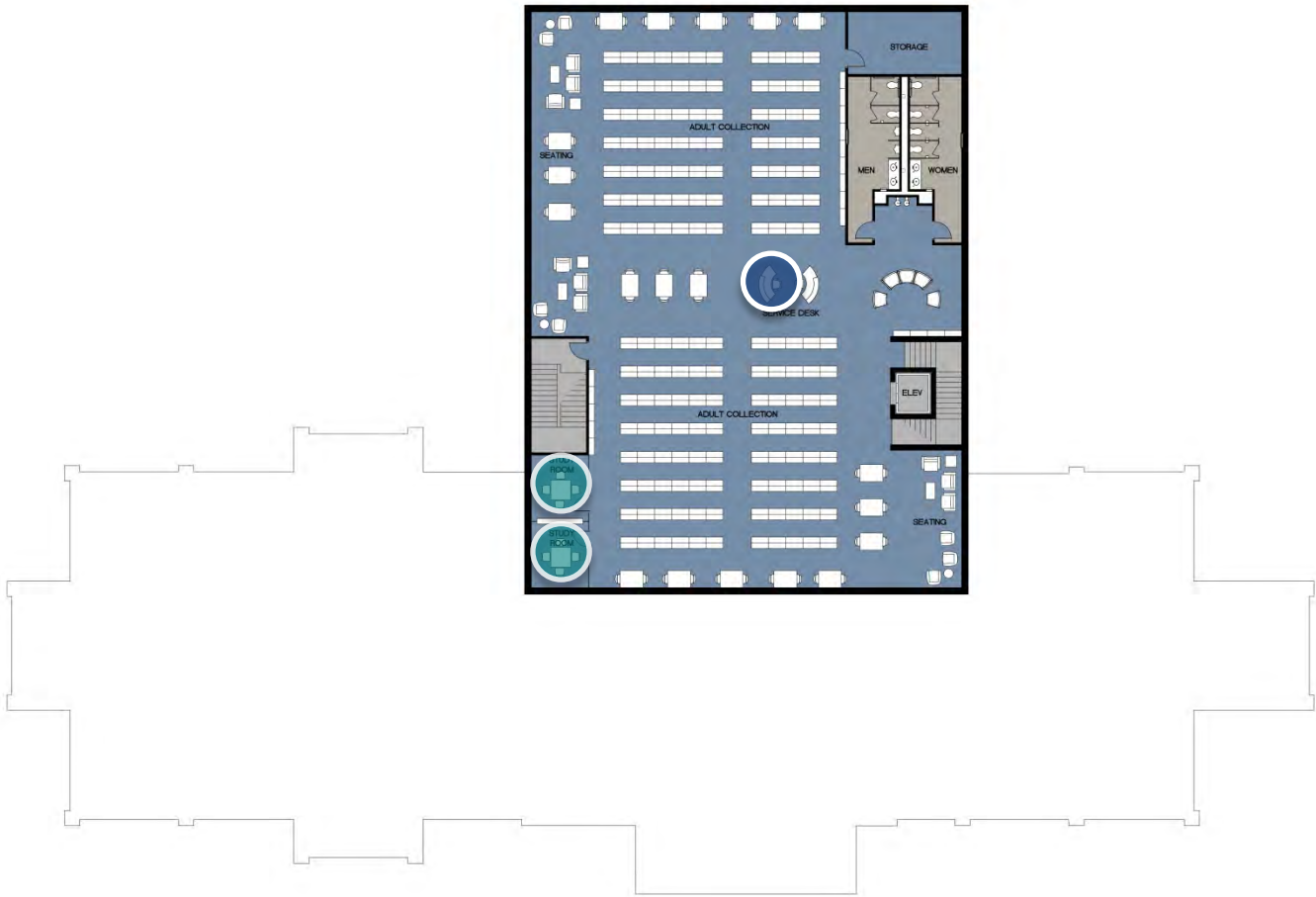


- Children's Collection
- Adult Collection
- Teen Area
- Meeting Space
- Collaborative Space
- Digital Lab
- Public Computers
- Staff

BAKER REGIONAL LIBRARY OPTION

FLOOR PLAN CONFIGURATIONS

PROPOSED SECOND FLOOR PLAN



- Children's Collection
- Adult Collection
- Teen Area
- Meeting Space
- Collaborative Space
- Digital Lab
- Public Computers
- Staff

BAKER REGIONAL LIBRARY OPTION

QUICK STATS

AMMENITIES

- Meeting Room (*Capacity – 100*)
- Storytime / Craft Room
- Collaborative Space (2)
- Study Rooms (2)
- Conference Room (1)
- Dedicated Teen Area
- Public Computers (30)
- Children's Computers (12)
(*2 Adult Computers in Children's Area*)
- Teen Computers (12)
- Digital Lab

SIZE

28,037 SF

COLLECTION CAPACITY

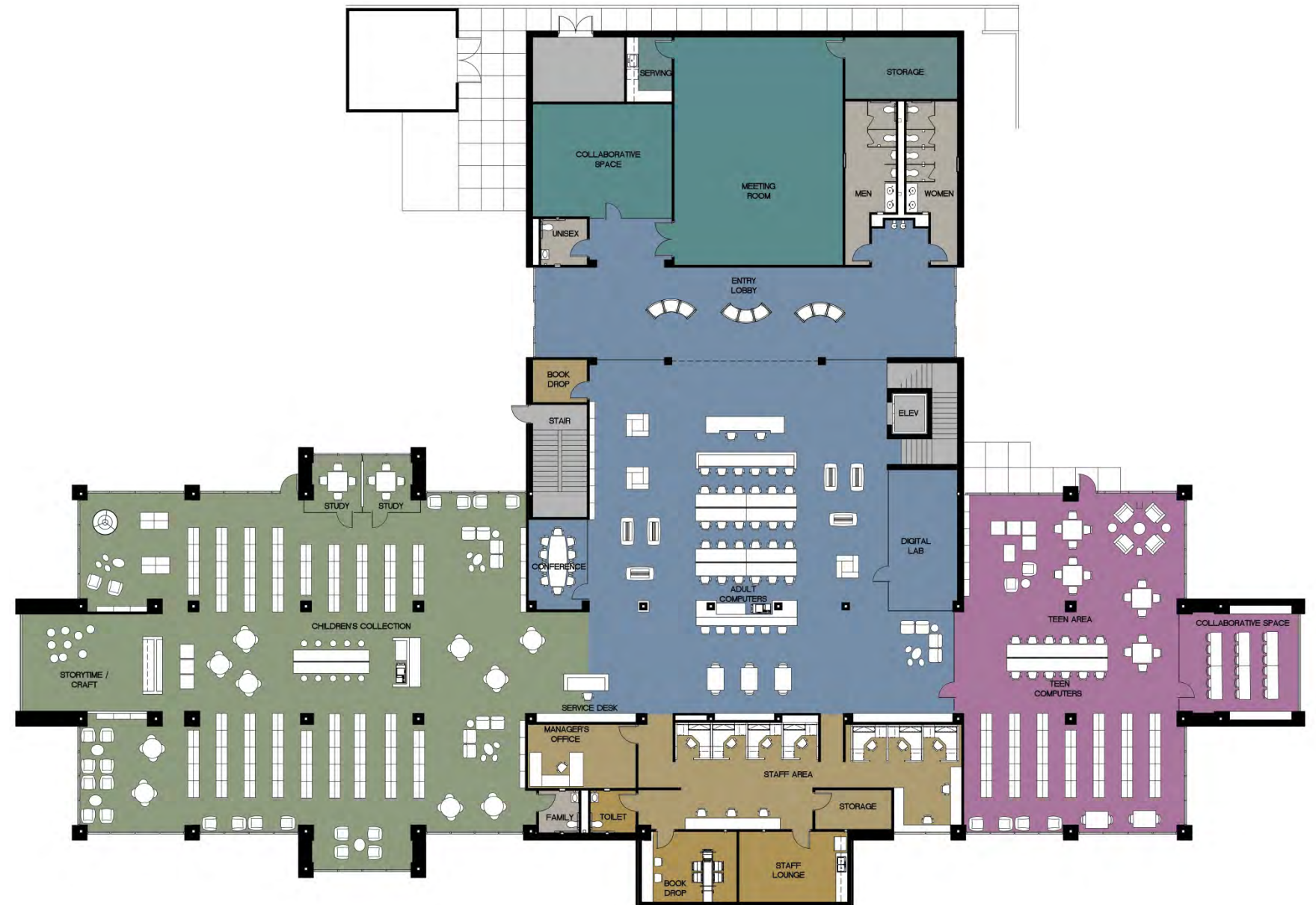
121,112 Collection Capacity

COST RANGE

\$5.9 TO \$9.5 Million*

**based on estimated costs for year 2025*

RENOVATION RATING



JONES CREEK REGIONAL LIBRARY RECOMMENDATIONS

TO REMAIN

- Architectural Character
- Existing Organization

PROPOSED CHANGES

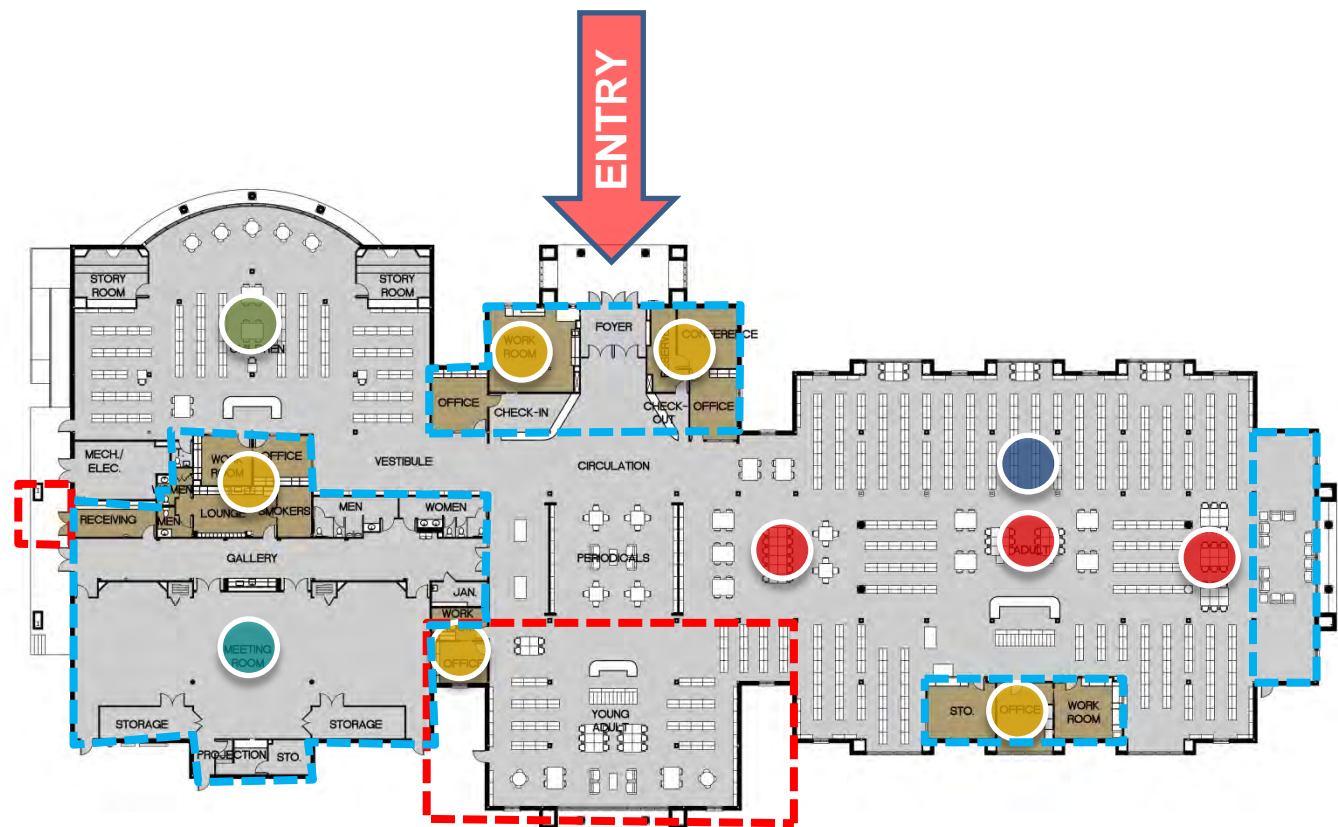
- Relocate Restrooms
- Renovate Existing Meeting Room Area
- Expand Meeting Room Capacity
- Increase Collaborative Space
- Revise Entry Sequence
- Revise Children's Area
- Create Dedicated Teen Area
- Expand for a Drive-Up Book Drop



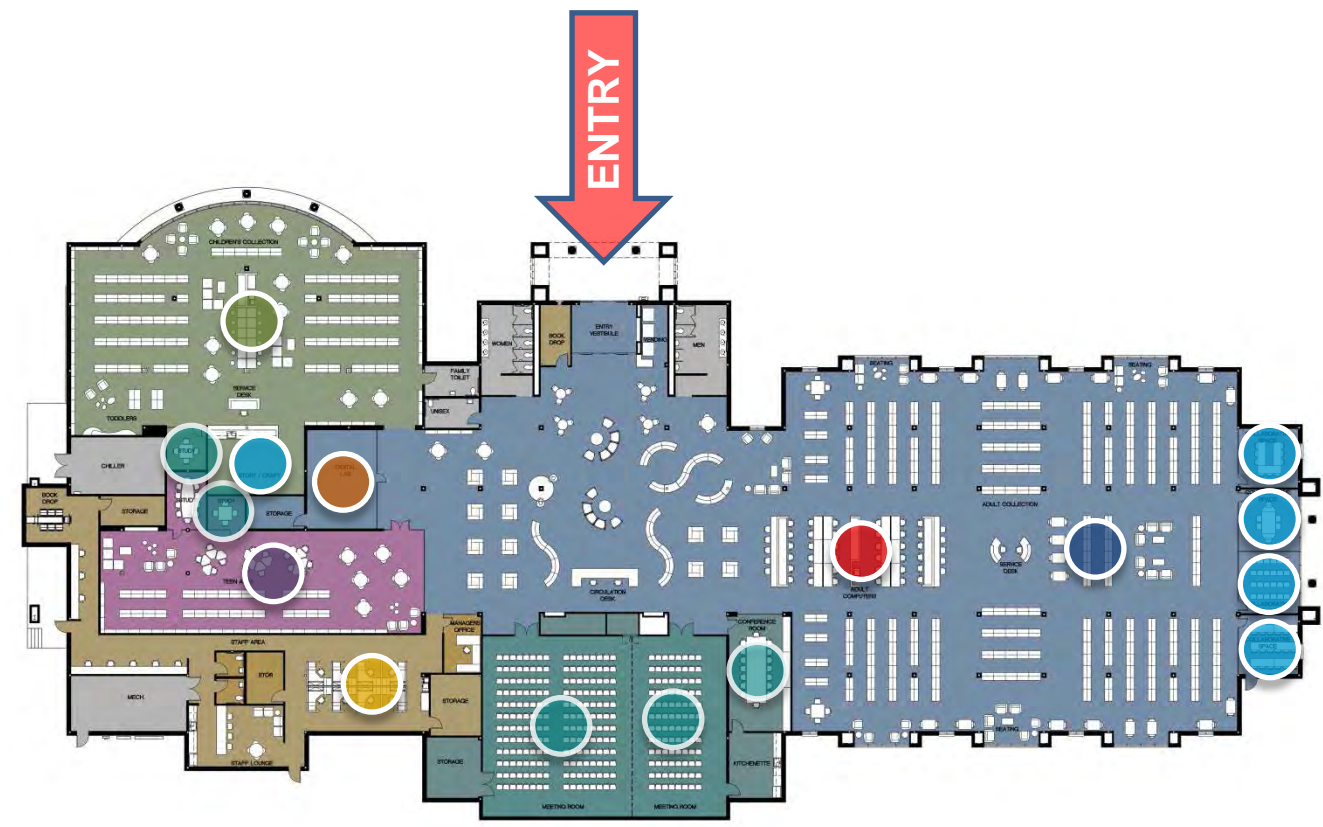
JONES CREEK REGIONAL LIBRARY

FLOOR PLAN CONFIGURATIONS

EXISTING PLAN



PROPOSED PLAN



- Children's Collection
- Adult Collection
- Teen Area
- Meeting Space
- Collaborative Space
- Digital Lab
- Public Computers
- Staff

PROPOSED SITE



JONES CREEEK REGIONAL LIBRARY

QUICK STATS

AMMENITIES

- Meeting Room (*Capacity – 300*)
- Storytime / Craft Room*
- Collaborative Space (4)
- Study Rooms (2)
- Conference Room (1)
- Dedicated Teen Area
- Public Computers (36)
- Children's Computers (12)
(*2 Adult Computers in Children's Area*)
- Teen Computers (12)
- Digital Lab

SIZE

36,809 SF

COLLECTION CAPACITY

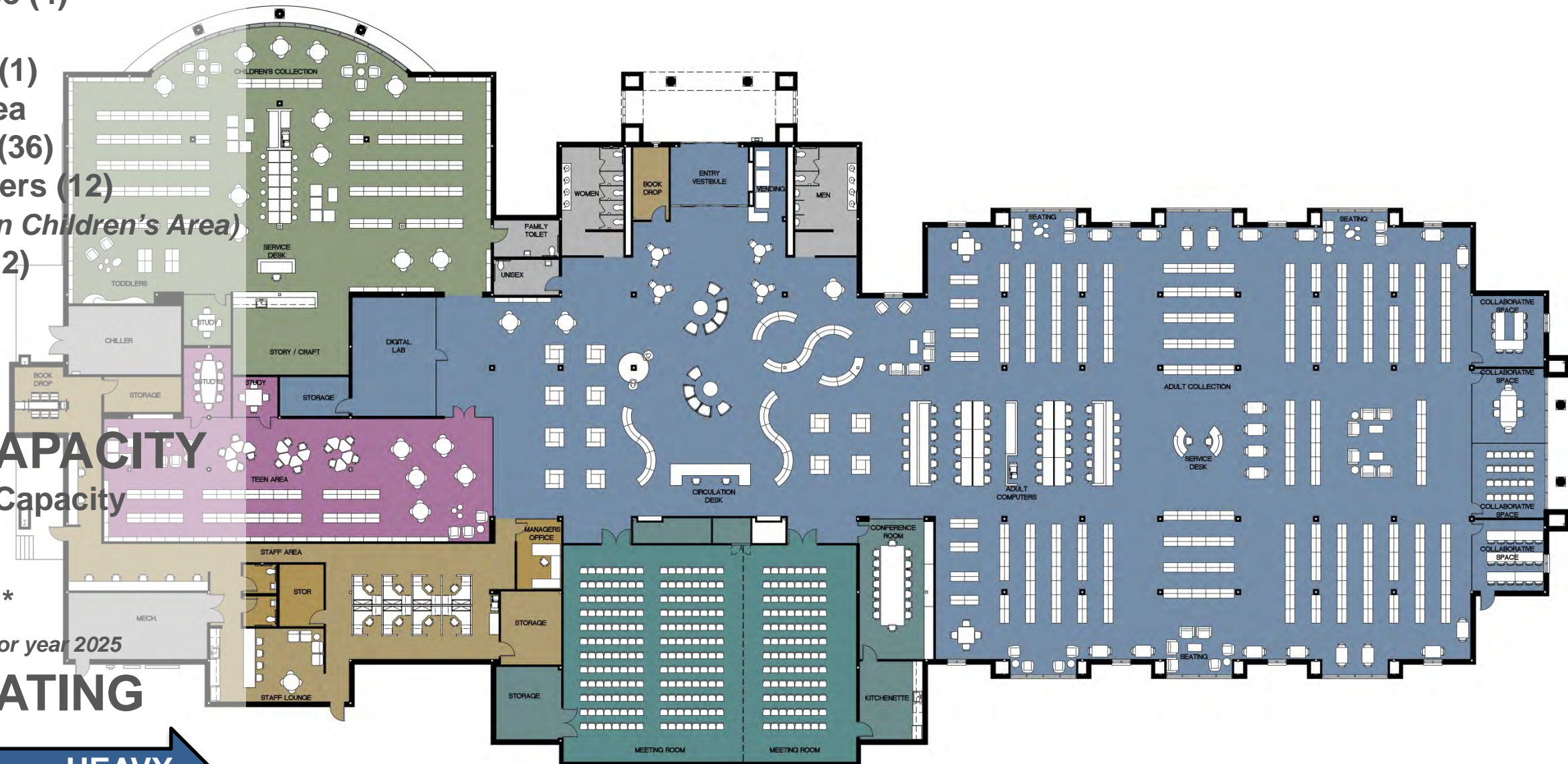
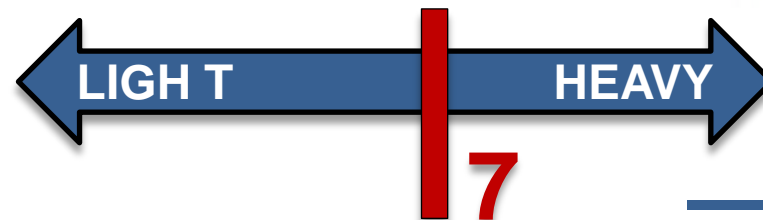
190,781 Collection Capacity

COST RANGE

\$3.3 TO \$6.1 Million*

**based on estimated costs for year 2025*

RENOVATION RATING



GREENWELL SPRINGS ROAD REGIONAL LIBRARY RECOMMENDATIONS

TO REMAIN

- Exposed Architectural Structure
- Architectural Character
- Existing Organization

PROPOSED CHANGES

- Relocate Restrooms
- Reconfigure Shelving
- Consolidate Staff Area
- Increase Collaborative Space
- Revise Meeting Room
- Revise Entry Sequence
- Expand Children's Area
- Create Dedicated Teen Area

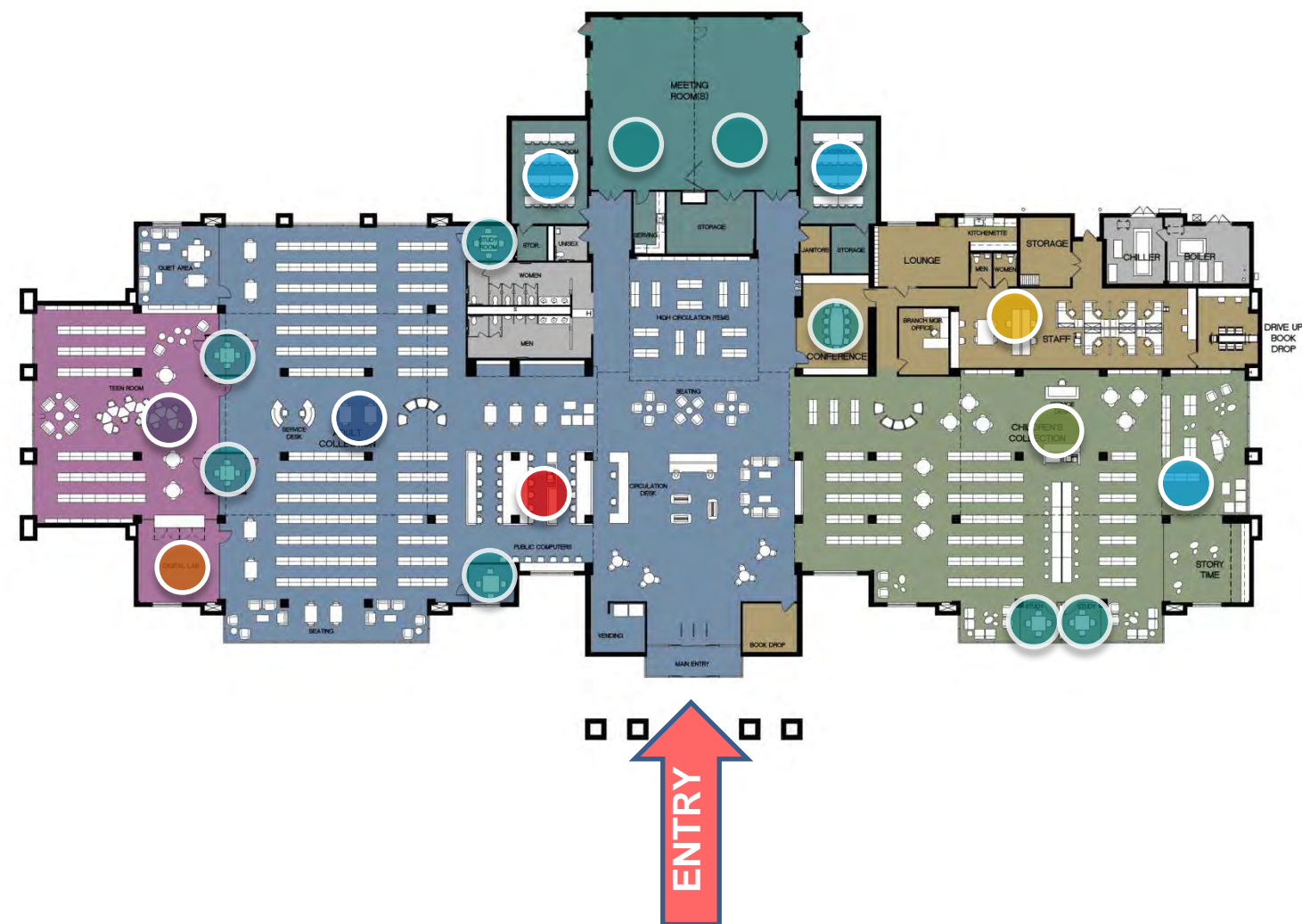
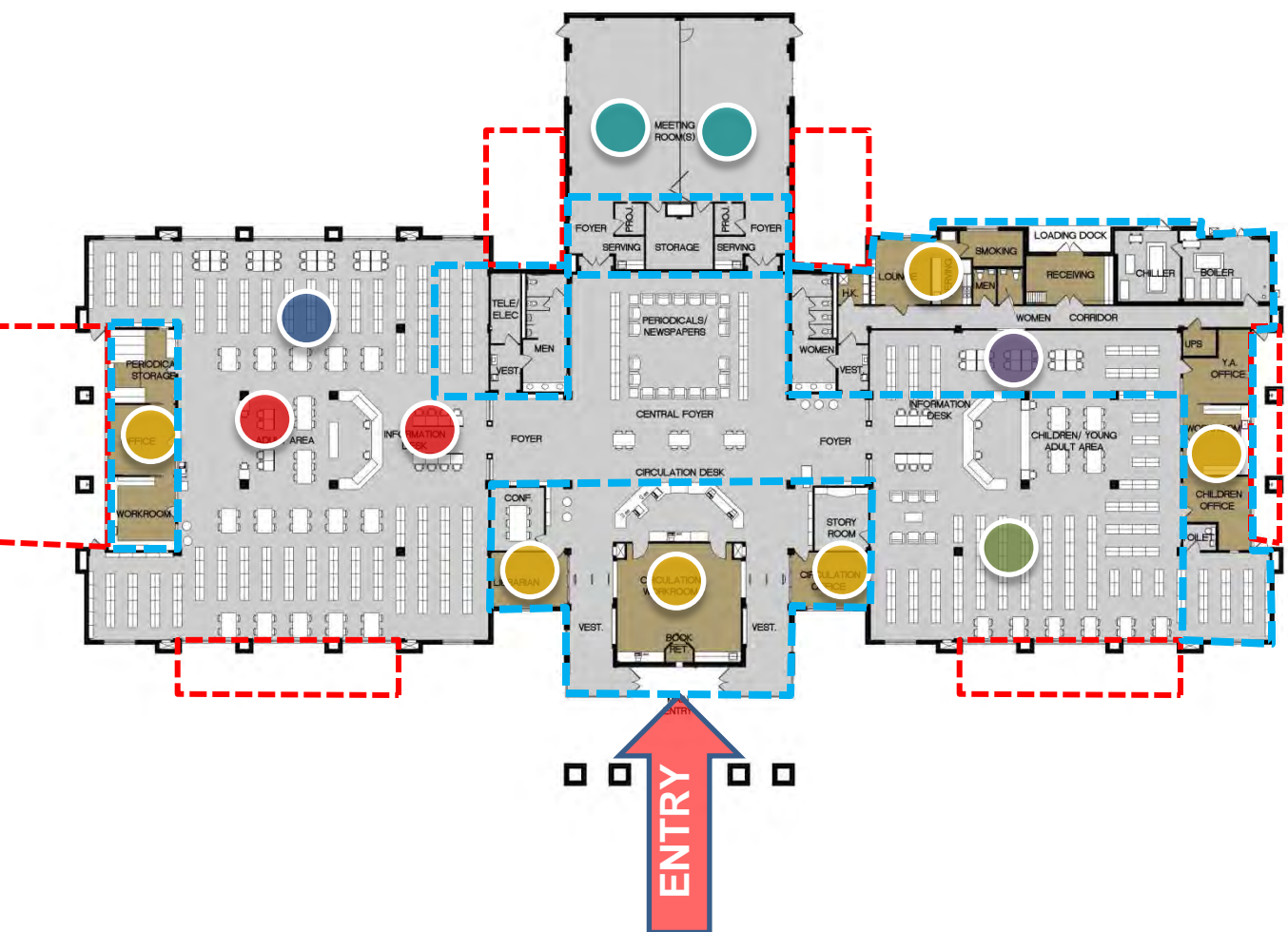


GREENWELL SPRINGS ROAD REGIONAL LIBRARY

FLOOR PLAN CONFIGURATIONS

EXISTING PLAN

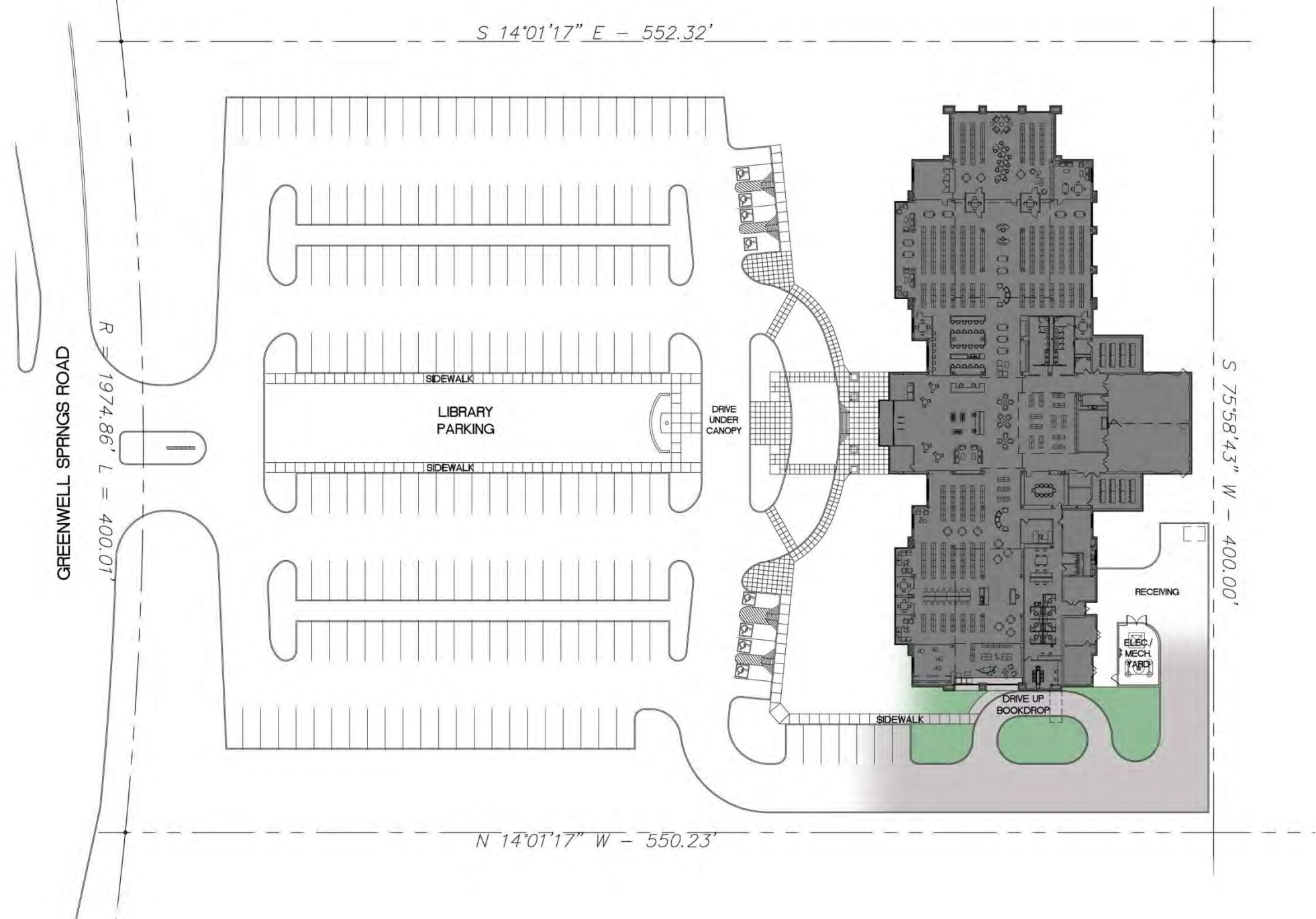
PROPOSED PLAN



- Children's Collection
- Adult Collection
- Teen Area
- Meeting Space
- Collaborative Space
- Digital Lab
- Public Computers
- Staff

GREENWELL SPRINGS ROAD REGIONAL LIBRARY SITE PLAN CONFIGURATIONS

PROPOSED SITE



GREENWELL SPRINGS ROAD REGIONAL LIBRARY

QUICK STATS

AMMENITIES

- Meeting Room (Capacity – 212)
- Storytime / Craft Room
- Collaborative Space (2)
- Study Rooms (6)
- Conference Room (1)
- Dedicated Teen Area
- Public Computers (29)
- Children's Computers (16)
(2 Adult Computers in Children's Area)
- Teen Computers (11)
- Digital Lab

SIZE

28,262 SF

COLLECTION CAPACITY

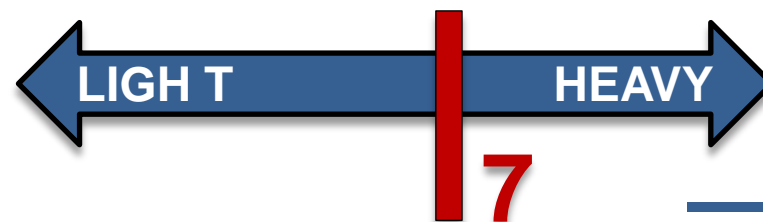
155,926 Collection Capacity

COST RANGE

\$5.4 TO \$6.5 Million*

**based on estimated costs for year 2025*

RENOVATION RATING



BLUEBONNET REGIONAL LIBRARY RECOMMENDATIONS

TO REMAIN

- Exposed Architectural Structure
- Architectural Character
- Existing Organization

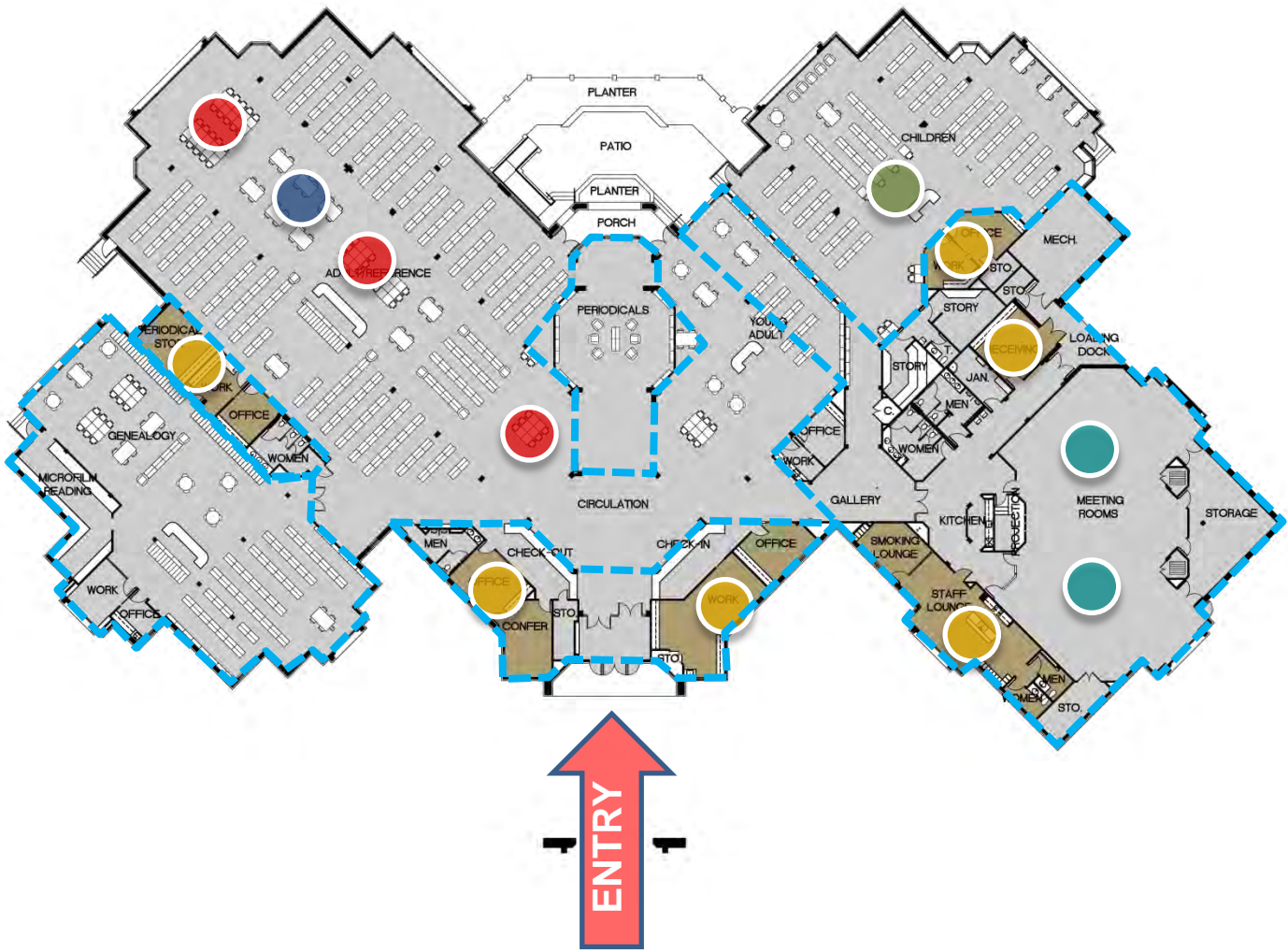
PROPOSED CHANGES

- Relocate Restrooms
- Reconfigure Shelving
- Consolidate Staff Area
- Increase Collaborative Space
- Revise Meeting Room

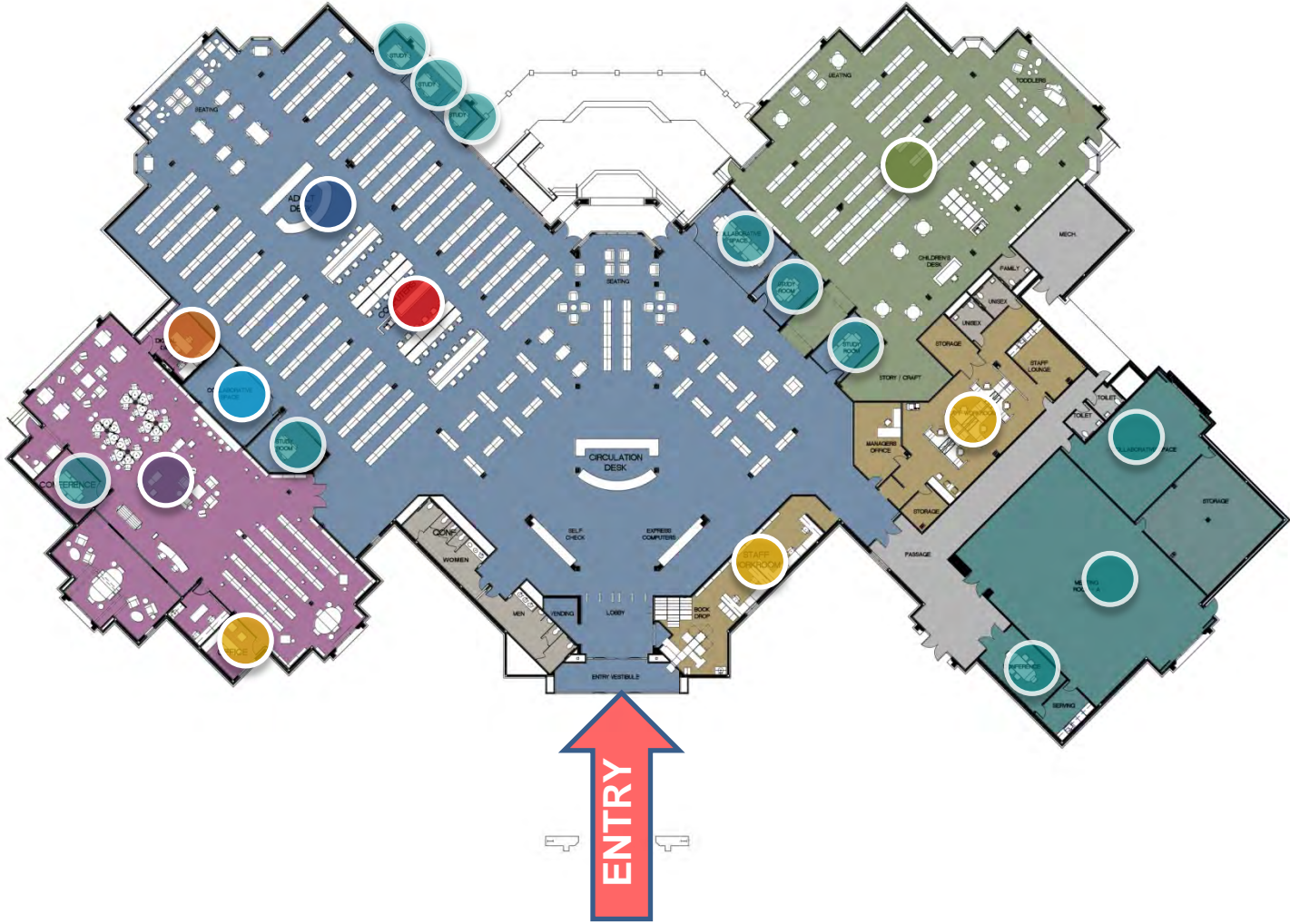


BLUEBONNET REGIONAL LIBRARY FLOOR PLAN CONFIGURATIONS

EXISTING PLAN



PROPOSED PLAN



- Children's Collection
- Adult Collection
- Teen Area
- Meeting Space
- Collaborative Space
- Digital Lab
- Public Computers
- Staff

BLUBONNET REGIONAL LIBRARY

QUICK STATS

AMMENITIES

- Meeting Room (Capacity – 300)
- Storytime / Craft Room
- Collaborative Space (1)
- Study Rooms (7)
- Conference Room (2)
- Dedicated Teen Area
- Public Computers (36)
- Children's Computers (16)
(2 Adult Computers in Children's Area)
- Teen Computers (14)
- Digital Lab

SIZE

36,659 SF

COLLECTION CAPACITY

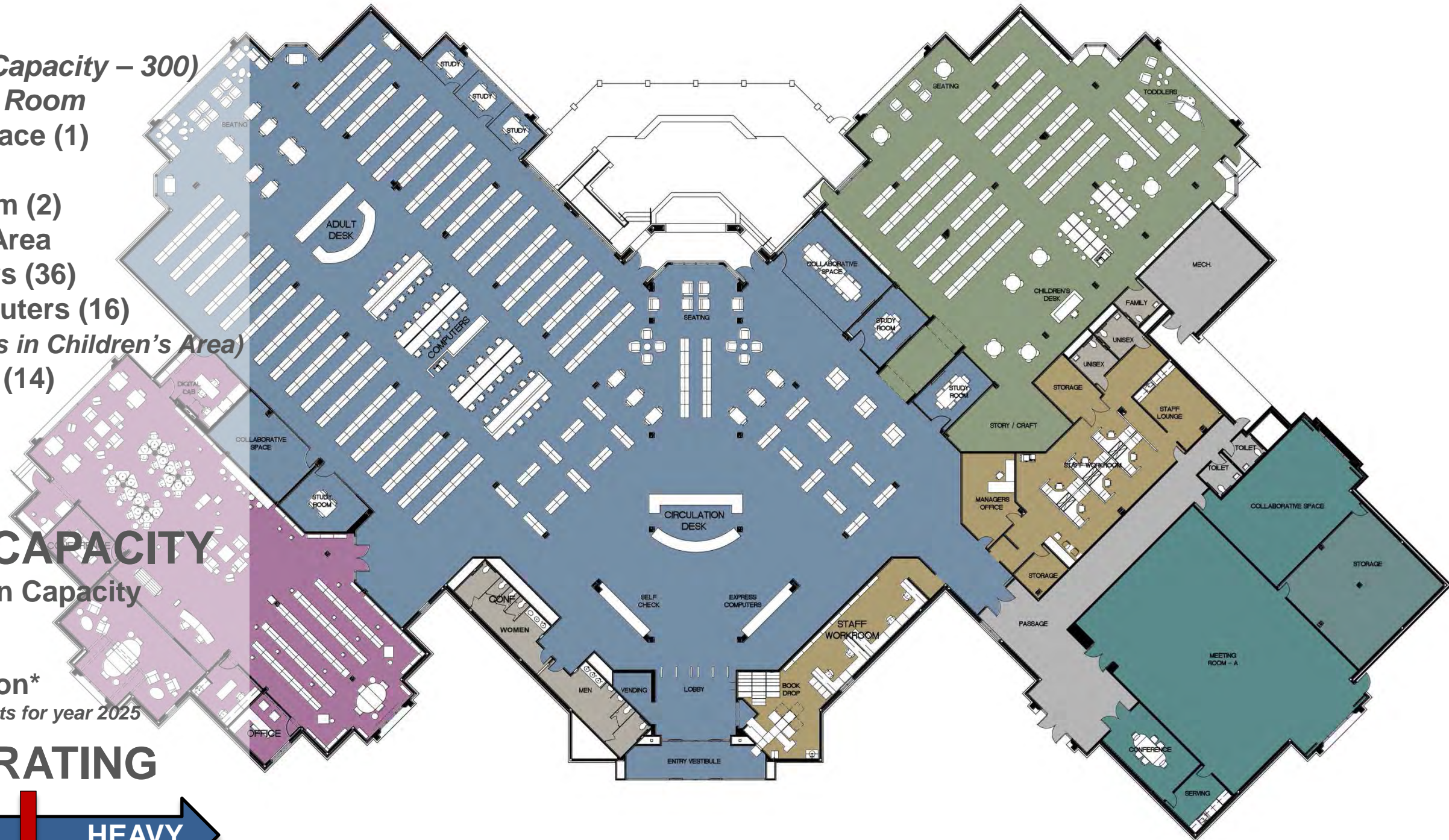
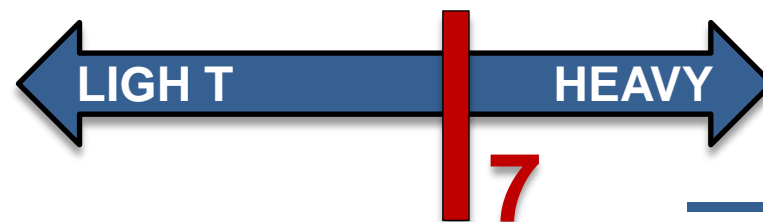
188,989 Collection Capacity

COST RANGE

\$1.9 TO \$6.4 Million*

**based on estimated costs for year 2025*

RENOVATION RATING



QUICK STATS

	Meeting Room	Mtg Rm Capacity	Collaborative Space	Conference Room	Study Room	Adult Computers	Children's Computers	Teen Computers	Teen Room	Digital Lab	Collection Capacity	Existing S.F.	Proposed S.F.	Proposed Cost* (millions)
Branch Libraries														
Eden Park Branch Library	Yes	95	2	1	2	32	12	8	Yes	No	63,303	13,474	14,174	\$1.5 to \$2.0
Pride-Chaneyville Branch Library	Yes	80	1	0	1	16	8	8	Yes	No	65,956	11,390	13,439	\$1.9 to \$2.0
Carver Branch Library	Yes	106	1	0	1	28	6	7	Yes	Yes	66,265	10,938	12,721	\$2.7 to \$3.6
Central Branch Library	Yes	100	0	1	5	25	8	10	Yes	No	111,224	17,228	18,912	\$2.6 to \$4.4
Scotlandville Branch Library	Yes	150	1	1	6	32	10	10	Yes	No	89,557	16,740	21,399	\$4.0 to \$4.5
Delmont Gardens Branch Library	Yes	100	2	0	5	40	12	12	Yes	Yes	111,465	18,189	18,955	\$8.0 to \$8.3
Zachary Branch Library	Yes	110	1	1	6	38	12	12	Yes	No	134,217	18,490	23,456	\$4.7 to \$4.8
Baker Branch Library	Yes	100	1	2	2	26	10	10	Yes	No	90,196	15,842	19,993	\$5.1 to \$5.7
Regional Libraries														
Zachary Regional Library <i>(Option)</i>	Yes	130	1	2	7	36	24	10	Yes	Yes	157,462	18,490	30,702	\$5.2 to \$8.3
Baker Regional Library <i>(Option)</i>	Yes	100	2	1	2	30	12	12	Yes	Yes	121,112	15,842	28,037	\$5.9 to \$9.5
Jones Creek Regional	Yes	300	4	2	6	36	12	12	Yes	Yes	190,781	33,436	36,809	\$3.3 to \$6.1
Greenwell Springs Road Regional	Yes	212	2	1	6	29	16	11	Yes	Yes	155,926	25,510	28,262	\$5.4 to \$6.5
Bluebonnet Regional Library	Yes	300	1	1	6	36	16	14	Yes	Yes	188,989	36,659	36,659	\$1.9 to \$6.4

**Proposed Costs are based on estimated costs for year 2025*

EAST BATON ROUGE PARISH
LIBRARY
BRANCH LIBRARY ASSESSMENT PLAN